



徐工徐工 助您成功
XCMG FOR YOUR SUCCESS

XLC260

CRAWLER CRANE
履带起重机



地址(Add): 中国江苏省徐州市金山桥经济开发区桃山路19号 邮编(Postal Code): 221004
No.19 Taoshan Road, Economic development zone of jinshanqiao, Xuzhou, Jiangsu Province, China
统一服务热线(Unified service hotline): 86 400-110-9999

销售热线Sales Hotline
销售电话(Sale Tel): 86 0516-87892094
销售传真(Sale Fax): 86 0516-87892074
电子邮件(E-mail): jjyxld@xcmg.com
服务质量投诉电话
(Quality Supervision Tel): 86 0516-87892587

服务热线Service Hotline
服务电话(Service Tel): 86 400-001-5678
服务传真(Service Fax): 86 0516-87892080
备件电话(Service Tel): 86 0516-87892086
备件传真(Service Fax): 86 0516-87892083



欢迎访问徐工商城
省心更省钱一站式



欢迎关注徐工履带起重机官方微信
1. 直接扫码“XCMG_xgj”增加好友。
2. 查找公众账号“徐工履带起重机”
3. 直接扫描上方二维码

—2021年10月版—

注: 出于产品不断改进的需要, 我们保留对产品型号、参数、配置进行变更的权力, 恕不另行通知。



CONTENTS

目录

P02	<ul style="list-style-type: none">• 产品概况 Product introduction• 安全保护 Safety Devices• 主要参数 Main parameters
P11	<ul style="list-style-type: none">• 重型主臂工况 Heavy boom working condition• 塔式副臂工况 Tower jib working condition• 主要部件运输参数 Transport parameters of main components

02

XLC260履带起重机 XLC260 CRAWLER CRANE

P03-P06 产品概况
Product introduction

P07-P08 安全保护
Safety Devices

P09-P10 主要参数
Main parameters

产品概况 Product introduction

臂架组合方式/Boom combination

XLC260 履带起重机的臂架为大截面、厚壁大管径、高强无缝钢管作为弦管和腹管，辅以高强度钢板分段焊接成中间等截面，两端变截面的四弦管空间桁架结构。全工况下，臂架配置包含主臂底节 1×9m、主臂过渡节 1×6m、主臂顶节 1×5m、塔(副)臂底节 1×1.5m、塔(副)臂过渡节 1×4.5m、塔(副)臂顶节 1×3m、前支架 1×7.5m、后支架 1×7.5m、臂端单滑轮、3 米中间节(1×3mA、1×3mB 及 1×3mC)、6 米中间节(1×6mA、1×6mB 及 1×6mC)、12 米中间节(2×12mA、2×12mB 及 2×12mC)。

The boom sections of XLC260 crawler crane use high-strength seamless pipe (large cross section, thick wall and large diameter) as the chords and lacing tubes, supplemented by four-chord lattice structure which is welded by high strength steel plate, with equal section in the middle and variable section at two ends. When the crane is configured with all working conditions, boom system includes boom butt 1×9m, boom transition section 1×6m, boom top 1×5m, tower jib butt 1×1.5m, tower jib transition section 1×4.5m, tower jib top 1×3m, front strut 1×7.5m, rear strut 1×7.5m, single top unit, 3m insert section (1×3mA, 1×3mB and 1×3mC), 6m insert section (1×6mA, 1×6mB and 1×6mC), 12m insert section (2×12mA, 2×12mB and 2×12mC).

重型主臂工况最大起重量 260t@5.5m(倍率 24)，最大起重力矩 260t×5.5m= 1430t.m。主臂长度 23m ~ 86m，臂节组成：底节臂 1×9m、过渡节臂 1×6m、顶节 1×5m、中间节 1×3mA 及 1×3mB、中间节 1×6mA 及 1×6mB、中间节 2×12mA 及 2×12mB。主臂可配臂端单滑轮。

In boom working condition, the maximum lifting capacity is 260t@5.5m (parts of line 24), the maximum load moment is 260t×5.5m= 1430t.m. Boom length 23m~86m, boom composition: boom butt 1×9m, boom transition section 1×6m, boom top 1×5m, boom insert 1×3mA and 1×3mB, boom insert 1×6mA and 1×6mB, boom insert 2×12mA and 2×12mB. Main boom is optionally configured with single top unit.

塔式副臂工况最大起重量 100t@10m(倍率 10)。塔臂长度 18m ~ 63m，臂节组成：底节臂 1×1.5m、过渡节臂 1×4.5m、顶节臂 1×3m、中间节 1×3mB 及 1×3mC、中间节 1×6mB 及 1×6mC、中间节 1×12mB 及 2×12mC、前支架 1×7.5m、后支架 1×7.5m。塔臂可选配塔臂单滑轮。

In tower jib working condition, the maximum lifting capacity is 100t@10m (parts of line 10). Tower jib length 18m ~ 63m, tower jib composition: jib butt 1×1.5m, jib transition section 1×4.5m, jib top 1×3m, jib insert 1×3mB and 1×3mC, jib insert 1×6mB and 1×6mC, jib insert 1×12mB and 2×12mC, front strut 1×7.5m, rear strut 1×7.5m. Tower jib is optionally configured with tower jib single top.

轻型主臂长度 25.5m ~ 97.5m，由主臂臂节与塔臂臂节搭配组合而成。

Light boom length 25.5m ~ 97.5m, light boom is the combination of boom sections and tower jib sections.

臂架组合方式/Boom combination

固定副臂工况最大起重量 100t@8m(倍率 10)。固定副臂长度 9m ~ 30m，臂节组成：底节臂 1×1.5m、过渡节臂 1×4.5m、顶节臂 1×3m、中间节 1×3mB 及 1×3mC、中间节 1×6mB 及 1×6mC、中间节 1×12mB、支架 1×7.5m。其中 9m 固定副臂还可与重型主臂 23m、26m 组成盾构工况使用，主钩单独吊重最大 225.7t，副钩单独吊重最大 100t，双钩复合交替提升可吊重最大 170t。

In fixed jib working condition, the maximum lifting capacity is 100t@8m (parts of line 10). Fixed jib length 9m ~ 30m, composition: jib butt 1×1.5m, jib transition section 1×4.5m, jib top 1×3m, jib insert 1×3mB and 1×3mC, jib insert 1×6mB and 1×6mC, jib insert 1×12mB, strut 1×7.5m. Among which, 9m fixed jib can be used with 23m and 26m main boom to compose TBM working condition. In TBM working condition, when main hook or aux. hook is used separately, the maximum lifting capacity of main hook is 225.7t, the maximum lifting capacity of aux. hook is 100t; when main hook and aux. hook are used at the same time alternatively, the maximum lifting capacity is 170t.

臂架变幅构件/Boom luffing components

采用高强度拉板结构，安全系数高；拉板过渡采用平衡梁结构，受力均匀；单拉板配有“桃”形连接孔，安装方便、省力、高效。

Boom luffing component is made of high-strength pendant structure, with high safety factor. Pendant transition adopts balance beam structure with uniform stress; single pendant is equipped with “peach”-shaped connecting hole, the assembly is convenient, labor-saving and efficient.

桅杆/Mast

桅杆由箱形双肢结构组成，两肢之间有加强横梁，稳定性好。桅杆顶升油缸可绕转台的连接铰点旋转，实现桅杆扳起顶升和降落。

Mast is a box-type two-limb structure, with strengthened beam between two limbs for good stability. Mast raising cylinder can rotate around connection pivot of turntable, to realize mast erection, raising and lowering.

转台/Turntable

转台是联系上下车的关键承载结构件，采用高强度钢板焊接而成的双侧“工”字梁箱框式复合结构，通过回转支承可与下车进行联接，整体强度高、稳定性好。操纵室、主变幅机构、发动机系统、液压泵组、液压阀、电控柜、桅杆、主臂底节、上车平衡重及其自拆装的油缸等可分别与转台在不同部位进行联接。

Turntable is a key load bearing structural component to connect crane superstructure and crane undercarriage, use of high-strength steel plate welded in “工” box-type composite box beam structure on both sides, coupled with undercarriage through slewing ring, with good overall strength and stability. Cab, main luffing winch, engine system, hydraulic pumps, hydraulic valves, electrical cabinet, mast, boom butt, superstructure counterweight and the self-assembly cylinder are respectively connected with different parts of the turntable.

机构组成/Mechanism composition

本机的机构配置及用途如下表

Crane mechanism and configuration refer to the table below:

序号 No.	机构名称 Name	用途 Application	布置位置 Location
1	主起升机构 Main hoist winch	重型主臂、重型主臂带臂端滑轮、固定副臂(含盾构)、塔式副臂、塔式副臂带臂端滑轮、轻型主臂工况时，作为主钩卷扬 Used for main winch in heavy boom, boom single top, fixed jib (include TBM), tower jib, tower jib single top and light boom working conditions.	主臂底节靠近根部 On boom butt, near the root position
2	副起升机构 Auxiliary hoist winch	【1】重型主臂带臂端滑轮及固定副臂(含盾构)工况时，作为副钩卷扬 (1) Used for aux. hook in boom single top and fixed jib (include TBM) working conditions; 【2】塔式副臂(含带臂端滑轮)工况时，作为塔臂变幅卷扬 (2) Used as tower jib luffing winch in tower jib (include tower jib single top) working condition	主臂底节靠近上部 On boom butt, near the top position
3	单滑轮起升机构【选配】 Single top winch (optional)	塔臂带臂端滑轮工况时作为副钩卷扬 Used for aux. hook in tower jib single top working condition	转台前方 Front side of turntable
4	主变幅机构 Main luffing winch	主臂变幅 Boom luffing	转台中部 Middle part of turntable
5	回转机构 Slewing unit	上车回转 Superstructure slewing	转台前方 Front side of turntable
6	行走机构 Travel unit	整机行走 Crane travel	履带驱动轮 Crawler drive sprocket

起升机构/Hoist winch

起升机构包括主起升机构、副起升机构及单滑轮起升机构(选配)，起升机构是由马达驱动行星齿轮减速机，通过卷筒、导向滑轮及起升滑轮组实现主钩或副钩起升下降。

Hoist winch includes main hoist winch, aux. hoist winch and single top winch (optional), planetary reducer is driven by motor, to achieve main or auxiliary hook block hoisting up/down through drum, guide pulley and hoist sheave block.

起升机构/Hoist winch

起升机构内置行星减速机，采用常闭制动器，实现“弹簧制动/液压释放”功能，安全可靠。卷筒采用球墨铸铁制造的双折线多层卷绕卷筒，具有良好的吸振性，保证钢丝绳多层卷绕不乱绳，有效地延长了钢丝绳的使用寿命。起升机构使用独立钢芯、高破断拉力、高抗挤压性的抗旋转特种钢丝绳，额定单绳拉力 13.5t，钢丝绳直径 φ 26 mm，主、副及单滑轮起升绳长分别为 620m、455m 和 250m。

The hoist winch has built-in planetary reducer, with constant closed brake, to achieve “spring braking/hydraulic release” function, safe and reliable. Ductile iron drum is used for the hoist winches with good vibration absorption. Double-line rope groove ensures that there is no messy rope when it is reeved in multiple layers, which effectively prolong the rope’s service life. The anti-rotation wire rope used for the winches has the features of independent steel core, high breaking force and high extrusion resistance, rated single line pull is 13.5t, rope diameter is φ 26 mm, the rope lengths for main hoist winch, aux. hoist winch and single top winch are 620m, 455m and 250m respectively.

变幅机构/Luffing winch

变幅机构包括主变幅机构和塔臂变幅机构。其中主变幅机构为双联卷筒独立驱动，通过销轴安装于转台中部。主变幅机构由马达驱动行星齿轮减速机，通过卷筒及变幅滑轮组来实现主臂变幅。主变幅机构内置行星减速机，采用常闭制动器，实现“弹簧制动/液压释放”功能，安全可靠。主变幅卷筒设有棘轮锁止装置，由液压油缸驱动棘爪，实现多重锁定保护。主变幅卷筒采用球墨铸铁制造的双折线多层卷绕双联卷筒，具有良好的吸振性，保证钢丝绳多层卷绕不乱绳，有效地延长了钢丝绳的使用寿命。主变幅机构使用高破断拉力的钢丝绳，额定单绳拉力 13.5t，钢丝绳直径 φ 26mm，长度 360m。塔臂变幅机构与副起升机构为同一装置，安装于主臂底节，通过功能切换实现塔臂变幅。

Luffing winch includes main luffing winch and tower jib luffing winch. Main luffing winch is independently driven by a double drum, and it is installed in the middle of turntable through pin shaft. For main luffing winch, planetary reducer is driven by motor to achieve boom luffing through drum and luffing pulley block. Main luffing winch has built-in planetary reducer, with constant closed brake, to achieve “spring braking/hydraulic release” function, safe and reliable. Main luffing winch drum has a ratchet pawl locking device, and driven by a hydraulic cylinder, to achieve multi-lock protection. Ductile iron drum is used for boom luffing winch with good vibration absorption. Double-line rope groove ensures that there is no messy rope when it is reeved in multiple layers, which effectively prolong the rope’s service life. Wire rope used for main luffing winch is with high breaking force, rated single line pull is 13.5t, rope diameter φ 26mm, rope length 360m. Tower jib luffing system shares with aux. hoist system, it is installed on boom butt and realize tower jib luffing through the changeover of the function.

产品概况 Product introduction

回转机构/Slewing unit

回转机构与回转支承采用外啮合方式驱动，布置在转台前部，由马达驱动行星齿轮减速机驱动回转支承，能够实现 360° 回转。
回转机构内置行星减速机，采用常闭制动器，以实现“弹簧制动 / 液压释放”功能，确保回转具有极高的制动安全性。
回转机构还设有机械式回转锁定装置，以实现回转机构的锁定保护。
回转机构具有自由滑转功能。

Slewing unit and slewing ring is driven by external meshing of gear, arranged in front of turntable, a planetary reducer is driven by motor to drive the slewing ring to achieve 360° rotation.
Slewing unit has a built-in planetary reducer, with constant closed brake design to achieve “spring braking/hydraulic release” function, to ensure the slewing mechanism a high safety brake.
Slewing unit also has a mechanical locking device for locking protection of the slewing unit.
Slewing unit also has a free-swing function.

回转支承/Slewing ring

采用椭圆滚道双列球式回转支承，强度高、承载力矩大，精度高、寿命长、维修保养方便。

Double-row ball slewing ring with elliptical track, it has the features of high strength, large bearing capacity, high precision, long service life and easy maintenance.

油缸总成/Cylinder assy

臂架与转台的连接、车架与履带梁、平衡重托盘与转台的连接，均采用油缸驱动的动力销连接；桅杆顶升油缸、支腿油缸、履带涨紧油缸使安装拆卸更为方便；操纵室设置油缸实现操纵室的垂直翻转和水平旋转。

The connection of boom and turntable, car-body and track frame, counterweight tray and turntable, is realized by power pinning driven by cylinder. Mast raising cylinder, outrigger cylinder, crawler tension cylinder, all these allow the machine assembly/disassembly quicker and easier. Operator's cab also has a cylinder for vertical tilting and horizontal rotation.

操纵室/Operator's cab

全新一代 1.25m 宽超大驾驶室，全明设计，外观华丽，视野宽阔，操作舒适、方便。

The new generation of 1.25m wide cab, it is bright with gorgeous appearance and wide vision, the operation of the cab is comfortable and convenient.

车架/Car-body

车架为箱型放射型结构，高强度钢板焊接，整体刚性好、强度大。

Car-body is a box-type radial structure, welded by high strength steel plates with good overall rigidity and high strength.

履带行走装置/Crawler travel unit

履带行走装置分为左、右履带行走装置，由履带架、履带板、支重轮、驱动轮、导向轮、托链轮及行走机构、张紧装置组成。
履带架：左右对称，各 1 件。高强度钢板焊接的箱型结构，车架安装定位设有平行垫铁，导向和耐磨效果好。
驱动轮：用高强螺栓连接在行星减速机外壳上。
支重轮：采用双法兰设计，内置浮动式密封，自润滑。
张紧轮：通过油缸和调整垫板，调节履带张紧程度。
托链轮：托链轮内置浮动密封，自润滑。
履带板：安装在履带梁上。
行走机构：常闭式行星齿轮减速机，行走动力强劲，有极高的灵活性和机动性。多片湿式常闭制动器，弹簧制动，液压松闸。

Crawler travel unit is divided into left/right crawler, consisting track frame, track shoe, track roller, drive sprocket, guide roller, carrier roller, travel device and tension device.
Track frame: symmetrically arranged, one for each side, made of high-strength steel plate welded in box-type structure, and a parallel iron is set for car-body installation positioning to play a role of guide and wear.

Drive roller: Drive roller assy. is connected on planetary reducer housing with high-strength bolts.
Track roller: double-flange design, with built-in floating seals, self-lubrication.
Tension roller: The rollers are used to adjust crawler tension level through hydraulic cylinder and adjusting pads.
Carrier roller: The rollers have built-in floating seals, self lubrication.
Track shoe: installed on crawler tracks.
Travel unit: constant closed planetary gear reducer with strong travel power and high flexibility and mobility. It is multiple wet-type constant closed brake, spring brake, and hydraulic release.

液压系统/Hydraulic system

采用液压先导比例控制的负载敏感 LUDV 系统，速度精准，操作灵敏，微动性好。主阀可实现多个动作的复合操作，结构紧凑，检修方便。
专用回转闭式系统设计，启停平稳，微动性好，比例特性佳，抗负载变化干扰能力强，满足精细吊装作业要求。

Adopt LUDV load sensing system controlled by hydraulic pilot proportional control, with accurate speed, sensitive operation and good fine motion performance. Main valve can achieve the synchronous operation of multiple movements, compact in structure and easy for maintenance.
Specialized slewing closed system design, with stable start and stop, good fine motion performance and proportional characteristics, meeting the requirements of fine lifting operation.

电气系统/Electrical system

电气系统主要包括如下部分：发动机控制、辅助设备、液压系统控制、力矩限制及安全监控、数据显示等。
电气系统的构成：常规电气系统和 PLC 控制系统。
常规电气系统包括电源、起动机控制、操纵室空调及音响、照明、雨刮器等。
PLC 控制系统包括对主副卷扬、回转、主臂变幅等动作的控制、发动机状态监测等，所有动作通过 CAN-bus 总线技术的 PLC 逻辑控制。

Electrical system mainly includes the following components: engine control, auxiliary equipment, hydraulic system control, load moment limiter, safety monitors and data display.
Electrical system composition: conventional electrical system and PLC control system.
Conventional electrical system includes power supply, start control, cab air conditioner and sound, lights, wipers and so on.
PLC control system includes control of main and auxiliary winches, slewing, boom luffing and other movements, engine state monitoring. All the movements are controlled through PLC logic control of CAN-bus technology.

发动机系统/Engine system

型号：上柴 SC9DF330G3
型式：直列、六缸、水冷、增压中冷、电喷、四冲程柴油发动机；
环保性：符合非道路国 III；
额定功率：243kw/2000rpm；
最大输出扭矩：1425N.m；
燃油箱容量：600L。

Model: Shanghai Diesel engine SC9DF330G3;
Type: six-cylinder in line, water-cooled, turbocharged, inter-cooled, electric injection four-stroke diesel engine;
Environmental protection: comply with off-road China III;

Rated power: 243kw/2000rpm;
Maximum output torque: 1425N.m;
Fuel tank capacity: 600L.

配重/Counterweight

配重由车身配重和转台配重组成。
车身配重共 30t，车身配重可用桅杆吊实现自拆装，车身配重安装在履带架前后。其组成如下：车身配重 2 × 15t。
转台配重提供 85t、75t、65t 三种选择。为满足不同吊装需求，设计上按分级配重提供各自独立的性能表，客户使用工况更为实用、经济、方便、快捷。除此之外，根据使用工况最佳的配重数量，也可为客户节约更多的运输成本及购机成本。

Counterweight consists of car-body counterweight and turntable counterweight.
Car-body counterweight is total 30t and uses mast derrick to realize the self-assembly, car-body counterweight is installed at front and rear of track frame. Its composition is as follows: car-body counterweight 2 × 15t.
Turntable counterweight has three options of 85t, 75t and 65t. Independent load chart based on different counterweight combinations are provided to meet different lifting requirements, so that customers can use the working conditions more practical, economical, convenient and fast. In addition, the optional use of counterweight can also lower the cost for customers when transporting and buying the crane.

吊钩/ Hook block

吊钩配置如下
Hook block configuration is as the follows:

吊钩名称 Hook name	160T	13.5T	200T (选配) (option)	260T (选配) (option)		
自重(t) Weight (t)	2.2	0.5	4.2	4.6		
数量 Qty.	1	1	1	1		
滑轮组数量 Number of pulleys	7	0	7	9		

选配 260t、200t 吊钩适用于固定副臂 F9、F12 及盾构臂工况款。

Optional 260t, 200t Hook block are suitable for fixing Jib F9, F12 and TBM working condition.

安全保护 Safety Devices

本起重机广泛采用机械、电子和液压等多种安全及报警装置,以确保机器的安全使用。安全装置包括力矩限制器、回转锁定装置、起重臂防后翻装置、起升高度限位装置、起重臂角度限位装置、风速仪、水平仪、摄像头、回转警告、行走警告及液压系统溢流阀、平衡阀、液压锁等。

This crane widely uses mechanical, electronic and hydraulic and other safety and warning devices to ensure the safe use of the machine. The safety devices include: load moment limiter, slewing lock device, boom backstop device, hoist limit switch, boom angle limit device, anemometer, level gauge, camera, slewing warning, travel warning and hydraulic system relief valve, balance valve, hydraulic lock, and etc.

模式切换/Assembly mode & Working mode exchange switch

可以进行安装模式和工作切换。安装模式下,防过卷装置、起重臂限位装置、力矩限制器等均不起作用,以利于起重机安装。工作模式下,所有安全装置均起作用。

Exchange between assembly mode and working mode is realized. In Assembly mode, over-wind protection device, boom angle limiter and load moment limiter are all out of service, in order to facilitate crane assembly. In working mode, all safety devices do work.

紧急停止/Emergency stop button

具有紧急停止功能,在紧急情况下,快速停止所有动作。

In emergency conditions, press this button to stop all crane movements.

防误操作功能/Anti-operation error function

手柄具备防误操作功能,手柄前侧设置有安全保护开关,此开关没有按下时,所有动作信号被屏蔽,手柄不起作用,可以防止误操作。

The handle is to prevent mis-operation. There is a safety protection switch on the handle, all movement signals are shielded when this switch is not pressed, and the handle is disabled to prevent operation error.

防过卷功能/Winch over-wind protection device

臂头设置过卷装置,防止钢丝绳过卷。当起升到一定高度时候,显示器上的过卷指示灯亮,同时自动停止起升动作。

There is an over-wind device on boom head to prevent rope from being over-wound. When main/auxiliary winch hoists up to a certain lifting height, the over-wound warning lamp on instrument panel lights up, at the same time, load moment limiter stops crane hoisting up movements.

防过放功能/Winch over-release protection device

起升机构使用编码器作为三圈保护器,可避免卷筒放绳时产生过放。当卷扬钢丝绳只剩三圈时,显示器上的过放指示灯亮,同时自动停止下落动作。

An encoder is set on hoist winches as rope end limiter to prevent wire rope from over-releasing. When there are only three loops of rope left, the over-release warning lamp on instrument panel lights up, at the same time, the movement of lowering down is stopped.

棘爪锁止功能/Ratchet locking device

具有棘爪锁止装置,用于锁定变幅卷扬,保证臂架在非工作时安全停放。

It is used to lock the luffing winch so that boom is stopped and placed safely at non-working state.

回转锁止功能/Slewing locking device

具有回转锁止装置,用于起重机停止时驻车存放,锁定上车回转。

Slewing locking device is used for superstructure slewing locking when stopping the crane.

防后倾功能/Backstop device

具有主臂、副臂支架防后倾装置,防止臂架及支架的后仰。

The crane is equipped with boom and jib strut backstop devices to prevent boom and strut backward tilting.

起重臂角度限制功能/Boom angle limit

臂架扳起到规定角度时,起升被停止,由力矩限制器和行程开关双重控制;当臂架在仰角小于规定角度时,下落即被停止,由力矩限制器控制并发出声报警。

When boom is raised to a specified angle, the boom raising is stopped by both control of load moment limiter and hoist limit switch. When boom luffing angle is less than the specified angle, boom lowering is stopped by control of load moment limiter and which also gives a sound warning.

吊钩防脱功能/Hook latch

起重钩设置防脱卡板,防止悬挂在起重钩钩头的吊索脱落。

All hook blocks are equipped with hook latch to prevent the hanging rope on the hook head from falling.

液压系统安全保护功能/Hydraulic system safety protection device

配置液压平衡阀、液压溢流阀等装置,保证系统工作时稳定安全。

Hydraulic system is equipped with hydraulic balance valve, hydraulic relief valve and other devices to ensure the stable and safe work for the system.

力矩限制器系统/LMI system

检测功能:力矩限制器能自动检测出起重臂的角度、起重载荷。

显示功能:彩色大屏幕触摸式液晶显示器(10.4寸)。用中文(或英文)和图形方式显示力矩百分比、实际起重量、额定起重量、工作半径、吊臂长度、角度、最大起升高度、工况代码、倍率、限制角度、信息代码等起重作业参数。警告功能:具有完整的预先报警、超载停止作业功能。如果检测到实际载荷超过额定载荷,起重臂超过极限角度,力矩限制器发出报警并限制当前动作。系统具有故障自诊断功能。

Detection function: LMI can automatically detect parameters such as boom angle and lifting weight.

Display function: use large-screen color LCD display (10.4 inches) to show important parameters in lifting operation through text (Chinese and English) and graphics, such as load moment percentage, actual lifting weight, rated lifting weight, radius, boom length, angle, maximum lifting height, working condition code, parts of line, limit angle and error code.

Warning function: with complete pre-alarm and overload stop function. If it is detected that the actual weight exceeds the rated lifting capacity or boom angle exceeds the maximum value, LMI will send alarm and limit the current movement of the crane. The system has self-diagnosis function.

声光报警功能/Audio/video warning

具有三色报警灯和声光报警器,显示车辆负荷及动作状态,警示司机及车外人员。

The tri-color light and audio/video warning can show crane loading and operation state to give the operator and staff outside warning.

照明灯/Illuminator lamp

照明灯装在转台前方、操纵室上方和操纵室内,提供照明。

The illuminator lamp is in front of turntable, on the top of and inside operator's cab for lighting.

后视镜/Rearview mirror

位于操纵室外侧,便于操作司机观察机器后方情况。

It is located outside the operator's cab for the driver easy to observe the situation behind the machine.

示高灯/Height mark lamp

示高灯安装在臂架顶部,作为高空警示。

It is located on boom tip for high level operation warning.

风速仪/Anemometer

实时检测当前风速,并传送到操纵室的监视器上,提醒操作者注意风载荷安全。

It can detect the current wind speed and send signal to the monitor in operator's cab to remind the operator for safe operation in wind load.

水平仪/Level gauge

配有电子和机械两种水平仪,可显示使用路面的倾斜程度,为操作者提供机器水平度参考。

This crane is equipped with electronic and mechanical level gauges, which can display the ground gradient, so as to provide crane levelness for the operator.

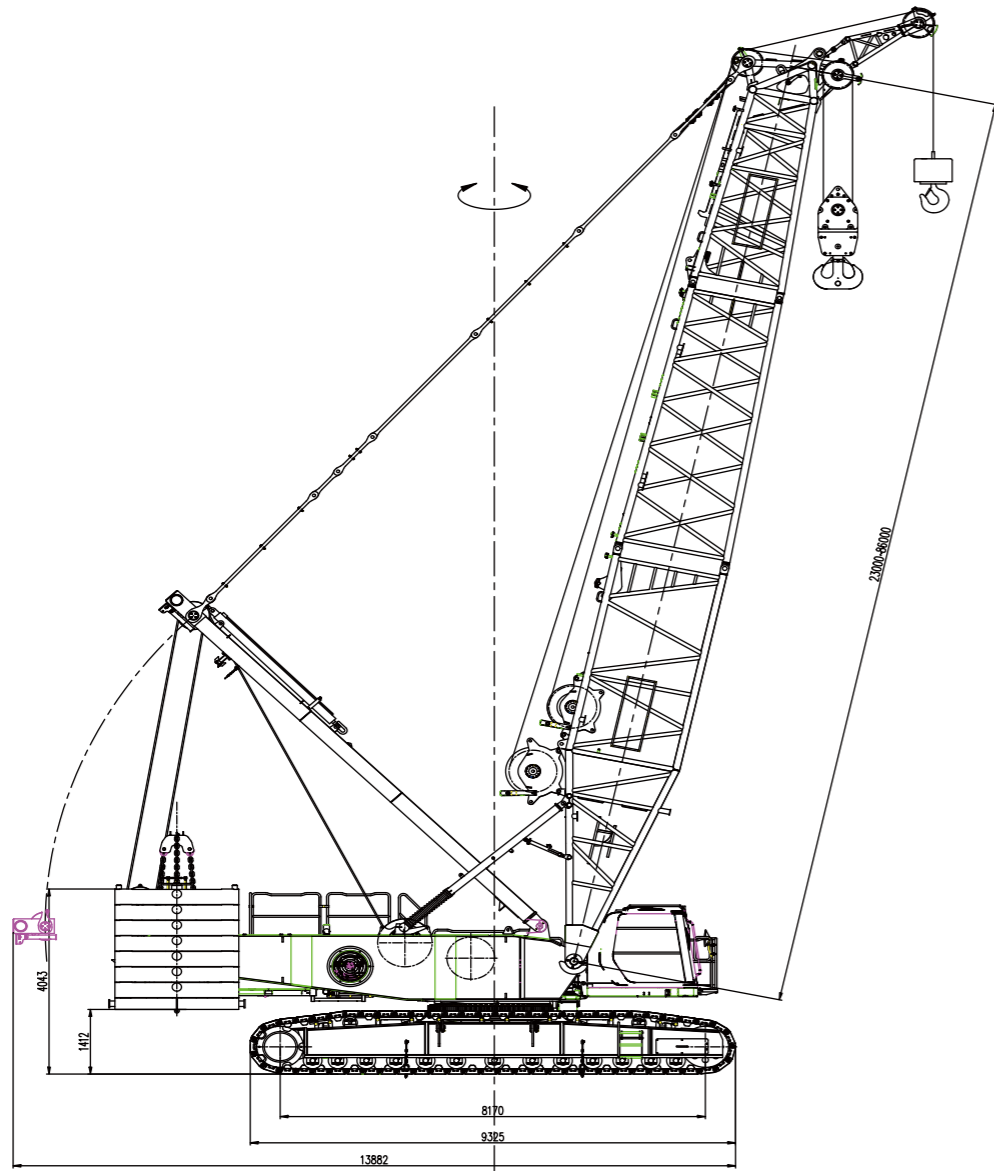
监控系统/Monitoring system

由四个摄像头和一个监视器组成,可监视主、副卷扬和变幅卷扬排绳情况及车身尾部安全情况、臂头吊重情况。

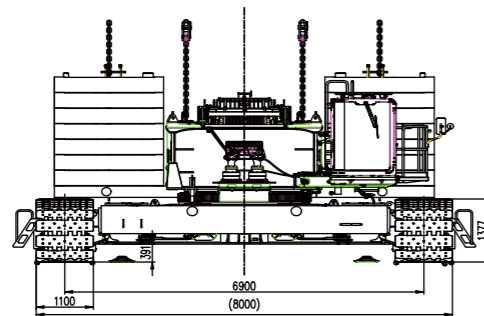
The monitoring system is composed of four cameras and one monitor. This system is used to monitor the rope arrangement on main winch, aux. winch and luffing winch, as well as the safety condition at rear of the crane and the lifting condition on boom head.

主要参数
Main parameters

外形尺寸/ Outline Dimensions



拆去臂架、桅杆等 Remove boom, mast and etc.



XLC260 履带起重机外形图
XLC260 crawler crane outline dimension

主要技术参数/Technical Parameters

项目/Item		单位/Unit	数值/Data
最大起重力矩 Max. rated lifting capacity	主臂工况 Boom working condition	t	260
	塔式副臂工况 Tower jib working condition	t	100
	固定副臂工况 Fixed jib working condition	t	100
最大起重力矩 Max. load moment		t.m	1430
尺寸参数 Dimensions	主臂长度 Boom length	m	23~86
	塔式副臂长度 (选配) Tower jib length (optional)	m	18~63
	固定副臂长度 (选配) Fixed jib length (optional)	m	9~30
速度参数 Speed	起升最大单绳速度 Hoist winch max. single line speed	m/min	130
	主臂变幅最大单绳速度 Boom luffing winch max. single line speed	m/min	2×47
	塔臂变幅最大单绳速度 Tower jib luffing winch max. single line speed	m/min	130
	最大回转速度 Max. slewing speed	rpm	1.0
发动机 Engine	额定功率 Rated power	kW	243
	排放标准 Emission standard	-	非道路国Ⅲ Non-road China III
整机重量(基于23m主臂,260t吊钩) Total mass (23m boom, 260t hook block)		t	224.7
平均接地比压 Mean ground pressure		MPa	0.12
爬坡度 Grade-ability		-	30%
运输状态可拆解单元最大质量 Max. mass of single unit in transport state		t	35.4
最大单元运输尺寸 (长×宽×高) Max. dimension of single unit in transport state (L×W×H)		m	10.7×3.0×3.3

注释:

- 1.钢丝绳绳速指卷筒最外缠绕层,发动机空载转动时的计算值,会依载荷与操作条件不同而变化。
- 2.行走速度、爬坡能力、平均接地比压及回转速度是基于水平光滑坚实地面的理论计算值。
- 3.表格数值为基于85t转台平衡重、30t车身平衡重的配置参数。
- 4.本公司保留对技术参数的更新更改权,如有变更恕不另行通知。

Note:

- 1.Single line speed is the calculated value of the rope on the drum most outside layer with engine idle running, which changes according to different load and working conditions.
- 2.Travel speed and slewing speed is the theoretical value for the crane based on level and solid ground.
- 3.The data in this table is full boom configuration based on 85t turntable counterweight and 30t car-body counterweight.
- 4.We reserve the right to improve and update the technical specifications without prior notice.



XLC260履带起重机

XLC260 CRAWLER CRANE

P12-P38 重型主臂工况 Heavy boom working condition

- 1.1主臂工况_无臂端滑轮(HB/1)的主臂主钩特性
1.1 Boom working condition _ boom main hook (without boom single top, HB/1)
- 1.2主臂工况_带臂端滑轮副钩(HBS/1)的主臂主钩特性
1.2 Boom working condition_boom main hook (with boom single top aux. hook, HBS/1)
- 1.3主臂工况_带主臂主钩(HBS/2)的臂端滑轮副钩特性
1.3 Boom working condition_boom single top aux. hook (with boom main hook, HBS/2)

P39-P79 塔式副臂工况 Tower jib working condition

- 2.1塔式副臂工况主臂臂节组合
2.1Combinations of main boom sections under tower jib working condition
- 2.2 塔式副臂工况副臂臂节组合
2.2 Combinations of jib sections under tower jib working condition
- 2.3塔式副臂工况(HW)起臂表 (配重组合85t+30t)
2.3Boom raising table of tower jib working condition (HW) (counterweight combination 85t+30t)
- 2.4塔式副臂工况 (HW) 作业范围图
2.4 Working radius of tower jib working condition (HW)
- 2.5塔式副臂工况 (HW) 起重性能
2.5Partial lifting performance of tower jib working condition (HW)

P80-P86 主要部件运输参数 Transport parameters of main components

重型主臂工况/Heavy boom working condition

A、无臂端滑轮的重型主臂臂节组合表

A. Boom combinations in heavy boom working condition without boom single top

名称及数量 Name&Number	主臂底节 Boom Butt	主臂中间节 Boom insert	主臂中间节 Boom insert	主臂中间节 Boom insert	主臂过渡节 Boom transition section	主臂中间节 Boom insert	主臂中间节 Boom insert	主臂中间节 Boom insert	主臂顶节 Boom top
主臂组合 Boom combination	9m	3mA	6mA	12mA	6m	3mB	6mB	12mB	5m
HB23	1	1	0	0	1	0	0	0	1
HB26	1	0	1	0	1	0	0	0	1
HB29	1	1	1	0	1	0	0	0	1
HB32	1	0	0	1	1	0	0	0	1
HB35	1	1	0	1	1	0	0	0	1
HB38	1	0	1	1	1	0	0	0	1
HB41	1	1	1	1	1	0	0	0	1
HB44	1	0	0	2	1	0	0	0	1
HB47	1	1	0	2	1	0	0	0	1
HB50	1	0	1	2	1	0	0	0	1
HB53	1	1	1	2	1	0	0	0	1
HB56	1	0	0	2	1	0	0	1	1
HB59	1	1	0	2	1	0	0	1	1
HB62	1	0	1	2	1	0	0	1	1
HB65	1	1	1	2	1	0	0	1	1
HB68	1	1	1	2	1	1	0	1	1
HB71	1	1	1	2	1	0	1	1	1
HB74	1	1	1	2	1	1	1	1	1
*HB77	1	1	1	2	1	0	0	2	1
*HB80	1	1	1	2	1	1	0	2	1
*HB83	1	1	1	2	1	0	1	2	1
*HB86	1	1	1	2	1	1	1	2	1

注释:

1. “*” 主臂组合需要使用腰绳。
2. 主臂各臂节需拆去塔臂后拉板,主臂顶节拆去塔臂用导向滑轮。

Notes:

1. “*” Boom length needs to use center hitch.
2. For boom sections, tower jib rear pendant needs to be removed; for boom top section, tower jib guide pulley needs to be removed.

典型工况 Typical Working Conditions

B、带臂端滑轮的主臂臂节组合表

B. Boom combinations in boom working condition with boom single top

名称及数量 Name&Number	主臂底节 Boom Butt	主臂中间节 Boom insert	主臂中间节 Boom insert	主臂中间节 Boom insert	主臂过渡节 Boom transition section	主臂中间节 Boom insert	主臂中间节 Boom insert	主臂中间节 Boom insert	主臂顶节 Boom top
主臂组合 Boom combination	9m	3mA	6mA	12mA	6m	3mB	6mB	12mB	5m
HBS23	1	1	0	0	1	0	0	0	1
HBS26	1	0	1	0	1	0	0	0	1
HBS29	1	1	1	0	1	0	0	0	1
HBS32	1	0	0	1	1	0	0	0	1
HBS35	1	1	0	1	1	0	0	0	1
HBS38	1	0	1	1	1	0	0	0	1
HBS41	1	1	1	1	1	0	0	0	1
HBS44	1	0	0	2	1	0	0	0	1
HBS47	1	1	0	2	1	0	0	0	1
HBS50	1	0	1	2	1	0	0	0	1
HBS53	1	1	1	2	1	0	0	0	1
HBS56	1	0	0	2	1	0	0	1	1
HBS59	1	1	0	2	1	0	0	1	1
HBS62	1	0	1	2	1	0	0	1	1
HBS65	1	1	1	2	1	0	0	1	1
HBS68	1	1	1	2	1	1	0	1	1
HBS71	1	1	1	2	1	0	1	1	1
HBS74	1	1	1	2	1	1	1	1	1
*HBS77	1	1	1	2	1	0	0	2	1
*HBS80	1	1	1	2	1	1	0	2	1
*HBS83	1	1	1	2	1	0	1	2	1
*HBS86	1	1	1	2	1	1	1	2	1

注释:

1. “*” 主臂组合需要使用腰绳。
2. 主臂各臂节需拆去塔臂后拉板,主臂顶节拆去塔臂用导向滑轮。

Notes:

1. “*” Boom length needs to use center hitch.
2. For boom sections, tower jib rear pendant needs to be removed; for boom top section, tower jib guide pulley needs to be removed.

C、主臂工况起臂表

C. Boom raising table in boom working condition

无臂端滑轮(HB/1)的主臂工况起臂表

Boom raising table in boom working condition without boom single top (HB/1)

HB/1	配重组合: 转台配重(t)+车身配重(t) Counterweight combination: turntable counterweight (t)+car-body counterweight (t)		
	85+30	75+30	65+30
主臂组合 Boom combination			
HB23	○	○	○
HB26	○	○	○
HB29	○	○	○
HB32	○	○	○
HB35	○	○	○
HB38	○	○	○
HB41	○	○	○
HB44	○	○	○
HB47	○	○	○
HB50	○	○	○
HB53	○	○	○
HB56	○	○	○
HB59	○	○	○
HB62	○	○	○
HB65	○	○	○
HB68	○	○	○
HB71	○	○	○
HB74	○	○	○
*HB77	○	○	○
*HB80	○	○	○
*HB83	○	○	●
*HB86	○	●	×

注释:

1. “○” --可以起臂。“●” --需要楔块辅助起臂。“×” --不可起臂,不允许使用。
2. “*” 主臂组合需要使用腰绳。
- 3.起臂时, 请将履带驱动轮置于车体后方。
- 4.当臂长≥80m时, 主臂角度必须≥30° 时, 吊钩方可脱离地面。

Notes:

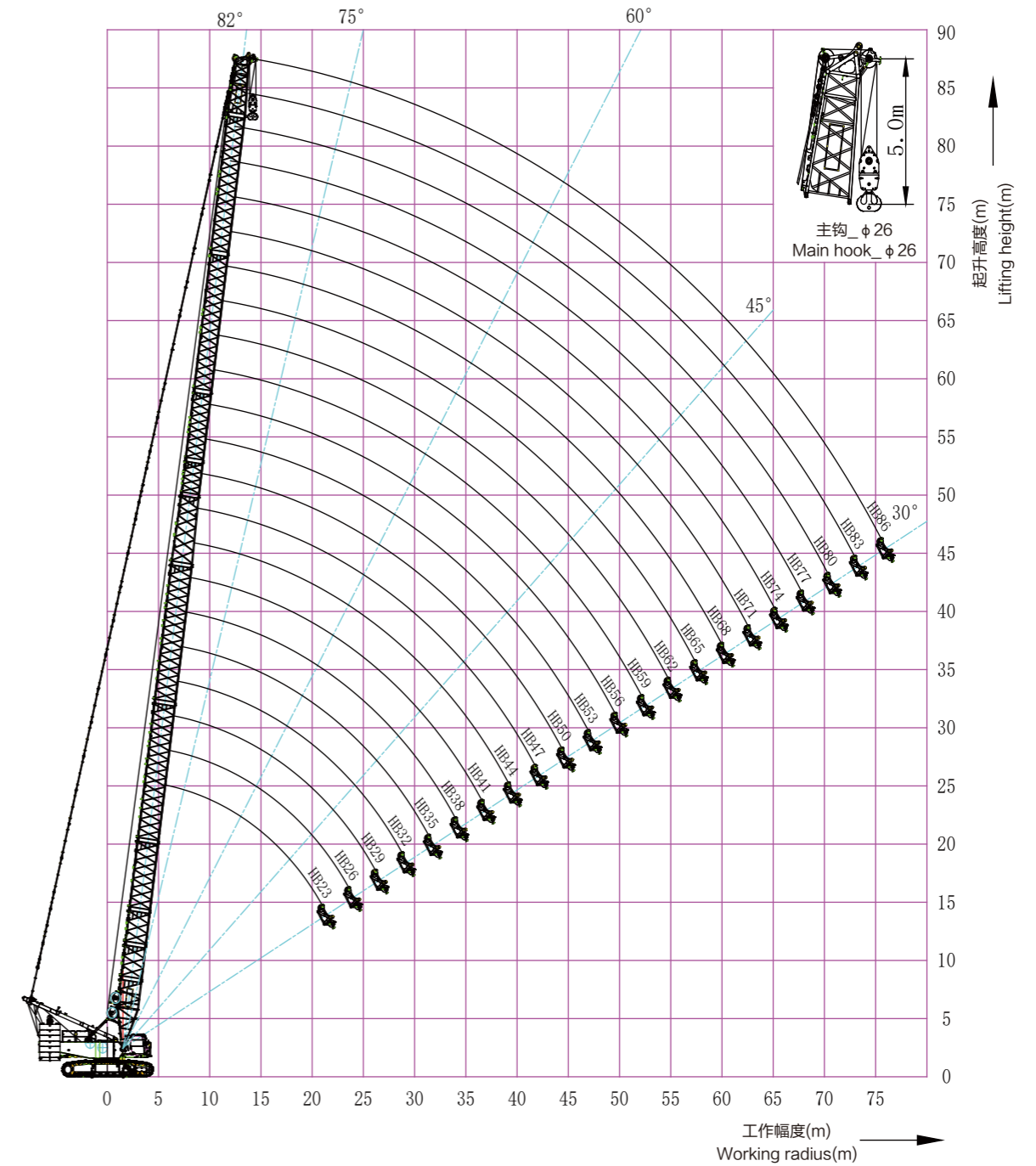
1. “○” -- can raise boom; “●” -- wedge required to raise boom; “×” - cannot raise boom, this working condition cannot be used.
2. “*” Boom length needs to use center hitch.
3. For boom raising, position crawler drive sprocket at the rear of the crane.
4. When boom length is ≥80m, do not lift the hook off the ground until boom angle is ≥30° .

1.1 主臂工况_无臂端滑轮(HB/1)的主臂主钩特性

1.1 Boom working condition _ boom main hook (without boom single top, HB/1)

主臂工况_无臂端滑轮(HB/1)的主臂主钩工作范围图

Boom working condition _ boom main hook working range (without boom single top, HB/1)



主臂工况_无臂端滑轮(HB/1)的主臂主钩工作范围图

Boom working condition _ boom main hook working range (without boom single top, HB/1)

典型工况 Typical Working Conditions

1.1 主臂工况_无臂端滑轮(HB/1)的主臂主钩特性

1.1 Boom working condition _ boom main hook (without boom single top, HB/1)

主臂工况_无臂端滑轮HB/1_85t+30t的主臂主钩性能

Boom working condition _ boom main hook lifting capacity table (without boom single top, HB/1_85t+30t)

作业半径 (m) Working radius (m)	主臂长度 (m) Boom length (m)										
	23	26	29	32	35	38	41	44	47	50	53
5.5	260										
6	230.9	230.9	215.9								
7	191.1	191.1	191	191	183.9	172.9					
8	162.7	162.7	162.6	162.6	162.4	162.3	161.7	150.4			
9	141.5	141.5	141.3	141.4	141.2	141	140.8	139.1	135.5	127.2	127.2
10	125	125	124.8	124.8	124.6	124.5	124.3	124.2	121.2	118.3	115.6
11	111.8	111.8	111.6	111.6	111.4	111.3	111	111	109.4	107	104.7
12	101	101	100.8	100.8	100.6	100.5	100.2	100.1	99.7	97.6	95.5
13	91.9	92	91.8	91.8	91.6	91.5	91.2	91.1	90.9	89.6	87.8
14	84.3	84.3	84.2	84.2	84	83.8	83.6	83.5	83.3	82.7	81.1
15	77.9	77.9	77.7	77.7	77.5	77.3	77.1	76.9	71.6	71.4	71.1
16	72.4	72.4	72.2	72.2	72	71.9	71.6	71.5	71.2	71	70.1
17	67	67.1	67.1	67.1	67	66.9	66.8	66.7	66.4	66.2	65.6
18	61.9	62	62	62	61.9	61.8	61.7	61.6	61.4	61.3	61.1
19	57.4	57.6	57.5	57.6	57.5	57.4	57.2	57.1	57	56.8	56.6
20	53.5	53.6	53.6	53.7	53.6	53.5	53.3	53.2	53	52.9	52.7
22		47.1	47	47.1	47	46.9	46.7	46.6	46.4	46.3	46.1
24		41.7	41.7	41.8	41.7	41.6	41.4	41.3	41.1	41	40.7
26			37.3	37.4	37.3	37.2	37	37	36.8	36.6	36.4
28				33.8	33.6	33.6	33.4	33.3	33.1	32.9	32.7
30					30.5	30.4	30.2	30.2	30	29.8	29.6
32					27.8	27.7	27.5	27.5	27.3	27.1	26.9
34						25.4	25.2	25.2	24.9	24.8	24.5
36							23.1	23.1	22.9	22.7	22.5
38								21.3	21.1	20.9	20.7
40								19.6	19.4	19.3	19
42									18	17.8	17.6
44										16.5	16.2
46											15
倍率 Parts of line	24	22	20	18	16	15	14	13	12	11	10

注释:

1.主臂长度超过74m的“*”处组合需使用腰绳,主臂长度超过77m推荐使用斜楔辅助起臂。

Note:

1.For areas with “*”, when boom length exceeds 74m, center hitch needs to be used; when boom length exceeds 77m, wedge needs to be used to assist boom raising.

1.1 主臂工况_无臂端滑轮(HB/1)的主臂主钩特性

1.1 Boom working condition _ boom main hook (without boom single top, HB/1)

主臂工况_无臂端滑轮HB/1_85t+30t的主臂主钩性能 (续前)

Boom working condition _ boom main hook lifting capacity table (without boom single top, HB/1_85t+30t)

作业半径 (m) Working radius (m)	主臂长度 (m) Boom length (m)										
	56	59	62	65	68	71	74	77*	80*	83*	86*
10	113.2	108.7	98.4								
11	102.7	100.6	97.5	88.6	79.4	71.6					
12	93.9	92	90.2	86.7	77.6	69.8	62.8	61.2	56		
13	86.4	84.7	83.1	81.5	76.4	68.7	61.8	60.4	55.3	50.8	46.6
14	79.9	78.4	76.8	75.4	74.1	67.5	60.7	59.5	54.6	50.1	46
15	71.3	71	70.8	70.2	68.9	66.5	59.7	58.7	53.8	49.4	45.4
16	69.3	68	66.8	65.6	64.4	63.4	58.7	58	53.1	48.8	44.8
17	64.8	63.7	62.6	61.5	60.4	59.4	57.7	57.2	52.4	48.1	44.2
18	60.9	59.8	58.8	57.8	56.7	55.9	54.9	54.1	51.7	47.5	43.6
19	56.8	56.3	55.4	54.4	53.5	52.7	51.7	51	50.1	46.9	43
20	52.8	52.6	52.3	51.4	50.5	49.7	48.9	48.2	47.4	46.2	42.5
22	46.2	46	45.8	45.6	45.3	44.7	43.9	43.3	42.5	41.9	41.1
24	40.9	40.7	40.5	40.3	40	39.9	39.6	39.2	38.4	37.8	37.1
26	36.5	36.3	36.1	35.9	35.6	35.5	35.3	35.2	34.9	34.4	33.7
28	32.9	32.6	32.4	32.2	31.9	31.8	31.6	31.5	31.3	31.1	30.7
30	29.7	29.5	29.3	29.1	28.8	28.7	28.4	28.4	28.1	28	27.7
32	27.1	26.8	26.6	26.4	26.1	26	25.7	25.7	25.4	25.4	25
34	24.7	24.5	24.3	24	23.8	23.6	23.4	23.3	23.1	22.9	22.6
36	22.7	22.4	22.2	22	21.7	21.6	21.3	21.3	21	20.8	20.6
38	20.9	20.6	20.4	20.1	19.9	19.7	19.5	19.4	19.2	19	18.7
40	19.2	19	18.8	18.5	18.3	18.1	17.9	17.8	17.5	17.4	17.1
42	17.8	17.5	17.3	17.1	16.8	16.7	16.4	16.4	16.1	15.9	15.6
44	16.5	16.2	16	15.7	15.5	15.3	15.1	15	14.8	14.6	14.3
46	15.3	15	14.8	14.5	14.3	14.2	13.9	13.8	13.6	13.4	13.1
48	14.2	13.9	13.7	13.5	13.2	13.1	12.8	12.8	12.5	12.3	12
50	13.2	12.9	12.7	12.5	12.2	12.1	11.8	11.8	11.5	11.3	11
52		12	11.8	11.5	11.3	11.2	10.9	10.8	10.6	10.4	10.1
54			10.9	10.7	10.4	10.3	10	10	9.7	9.6	9.3
56				9.9	9.7	9.5	9.3	9.2	8.9	8.8	8.5
58				9.2	8.9	8.8	8.5	8.5	8.2	8.1	7.8
60					8.2	8.1	7.9	7.8	7.5	7.4	7.1
62						7.5	7.2	7.2	6.9	6.8	6.5
64							6.6	6.6	6.3	6.2	5.9
66							6.1	6	5.8	5.6	5.3
68								5.5	5.3	5.1	4.8
70									4.8	4.6	4.3
72										4.1	3.9
74											3.4
76											3
倍率 Parts of line	9	9	8	7	7	6	5	5	5	4	4

注释:

1.主臂长度超过74m的“*”处组合需使用腰绳,主臂长度超过77m推荐使用斜楔辅助起臂。

Note:

1.For areas with “*”, when boom length exceeds 74m, center hitch needs to be used; when boom length exceeds 77m, wedge needs to be used to assist boom raising.

典型工况 Typical Working Conditions

1.1 主臂工况_无臂端滑轮(HB/1)的主臂主钩特性

1.1 Boom working condition _ boom main hook (without boom single top, HB/1)

主臂工况_无臂端滑轮HB/1_75t+30t的主臂主钩性能

Boom working condition _ boom main hook lifting capacity table (without boom single top, HB/1_75t+30t)

作业半径 (m) Working radius (m)	主臂长度 (m) Boom length (m)										
	23	26	29	32	35	38	41	44	47	50	53
5.5	244.6										
6	219.4	219.4	215.9								
7	181.5	181.5	181.4	181.4	181.3	172.9					
8	154.5	154.6	154.4	154.4	154.2	154.1	150.3	145.9			
9	134.3	134.3	134.2	134.2	134	133.9	132	128.5	125.1	121.9	118.8
10	118.6	118.6	118.4	118.5	118.3	118.1	117.4	114.6	111.8	109.1	106.6
11	106	106	105.9	105.9	105.7	105.6	105.3	103.2	100.9	98.6	96.5
12	95.8	95.8	95.6	95.6	95.4	95.3	95	93.8	91.8	89.9	88
13	87.2	87.2	87	87.1	86.8	86.7	86.4	85.9	84.1	82.4	80.8
14	80.2	80.2	80	80.1	79.8	79.7	79.4	79.1	77.5	76	74.5
15	73.5	73.6	73.6	73.7	73.6	73.5	73.4	73.2	71.8	70.5	69.1
16	67.1	67.2	67.2	67.3	67.2	67.1	66.9	66.9	66.7	65.6	64.4
17	61.6	61.8	61.7	61.8	61.7	61.6	61.4	61.4	61.2	61	60.2
18	56.9	57	57	57.1	56.9	56.8	56.7	56.6	56.4	56.3	56.1
19	52.7	52.9	52.8	52.9	52.8	52.7	52.5	52.5	52.3	52.1	51.9
20	49.1	49.3	49.2	49.3	49.2	49.1	48.9	48.8	48.6	48.5	48.3
22		43.1	43.1	43.2	43.1	43	42.8	42.7	42.5	42.4	42.2
24		38.2	38.2	38.3	38.1	38.1	37.9	37.8	37.6	37.4	37.2
26			34.1	34.2	34.1	34	33.8	33.7	33.5	33.4	33.1
28				30.8	30.7	30.6	30.4	30.3	30.1	30	29.7
30					27.8	27.7	27.5	27.5	27.2	27.1	26.8
32					25.2	25.2	25	25	24.7	24.6	24.3
34						23	22.8	22.8	22.6	22.4	22.2
36							20.9	20.9	20.7	20.5	20.2
38								19.2	19	18.8	18.6
40								17.6	17.4	17.3	17
42									16.1	15.9	15.7
44										14.7	14.5
46											13.3
倍率 Parts of line	24	22	20	18	16	15	14	13	12	11	10

注释:

1.主臂长度超过74m的“*”处组合需使用腰绳,主臂长度超过77m推荐使用斜楔辅助起臂。

Note:

1.For areas with “*”, when boom length exceeds 74m, center hitch needs to be used; when boom length exceeds 77m, wedge needs to be used to assist boom raising.

1.1 主臂工况_无臂端滑轮(HB/1)的主臂主钩特性

1.1 Boom working condition _ boom main hook (without boom single top, HB/1)

主臂工况_无臂端滑轮HB/1_75t+30t的主臂主钩性能 (续前)

Boom working condition _ boom main hook lifting capacity table (without boom single top, HB/1_75t+30t)

作业半径 (m) Working radius (m)	主臂长度 (m) Boom length (m)										
	56	59	62	65	68	71	74	77*	80*	83*	86*
10	104.4	102	98.4								
11	94.7	92.6	90.6	88	78.8	71					
12	86.5	84.7	83	81.3	77.6	69.8	62.8	61.2	56		
13	79.5	77.9	76.4	74.9	73.4	68.7	61.8	60.4	55.3	50.8	46.6
14	73.5	72.1	70.7	69.3	68	66.8	60.7	59.5	54.6	50.1	46
15	68.2	66.9	65.7	64.5	63.2	62.2	59.7	58.7	53.8	49.4	45.4
16	63.6	62.4	61.3	60.2	59	58.1	57	56.1	53.1	48.9	44.8
17	59.5	58.4	57.4	56.3	55.3	54.4	53.3	52.6	51.6	48.1	44.2
18	55.8	54.8	53.9	52.9	51.9	51.1	50.1	49.4	48.5	47.5	43.6
19	52.1	51.6	50.7	49.8	48.9	48.1	47.2	46.6	45.7	44.9	43
20	48.5	48.3	47.8	47	46.1	45.4	44.6	44	43.1	42.4	41.6
22	42.3	42.1	41.9	41.7	41.3	40.7	39.9	39.4	38.7	38	37.3
24	37.4	37.2	37	36.7	36.5	36.4	36	35.5	34.9	34.3	33.6
26	33.3	33.1	32.9	32.7	32.4	32.3	32	32	31.6	31.1	30.4
28	29.9	29.7	29.5	29.2	29	28.9	28.6	28.6	28.3	28.2	27.7
30	27	26.8	26.6	26.3	26.1	25.9	25.7	25.6	25.4	25.2	25
32	24.5	24.3	24.1	23.8	23.6	23.4	23.2	23.1	22.9	22.7	22.4
34	22.3	22.1	21.9	21.6	21.4	21.3	21	21	20.7	20.5	20.3
36	20.4	20.2	20	19.7	19.5	19.3	19.1	19	18.8	18.6	18.3
38	18.7	18.5	18.3	18	17.8	17.6	17.4	17.3	17.1	16.9	16.6
40	17.2	17	16.8	16.5	16.3	16.1	15.9	15.8	15.6	15.4	15.1
42	15.9	15.6	15.4	15.2	14.9	14.8	14.5	14.5	14.2	14	13.8
44	14.7	14.4	14.2	14	13.7	13.6	13.3	13.2	13	12.8	12.5
46	13.6	13.3	13.1	12.8	12.6	12.4	12.2	12.1	11.9	11.7	11.4
48	12.5	12.3	12.1	11.8	11.6	11.4	11.2	11.1	10.9	10.7	10.4
50	11.6	11.4	11.2	10.9	10.6	10.5	10.2	10.2	9.9	9.8	9.5
52		10.5	10.3	10	9.8	9.7	9.4	9.4	9.1	8.9	8.6
54			9.5	9.3	9	8.9	8.6	8.6	8.3	8.1	7.9
56				8.5	8.3	8.1	7.9	7.8	7.6	7.4	7.1
58					7.8	7.6	7.5	7.2	7.2	6.9	6.5
60						7	6.8	6.6	6.5	6.3	6.1
62							6.2	6	5.9	5.7	5.5
64								5.4	5.4	5.1	5
66								4.9	4.9	4.6	4.5
68									4.4	4.1	4
70										3.7	3.5
72											3.2
74											3.1
76											2.8
76											2.4
76											2
倍率 Parts of line	9	9	8	7	7	6	5	5	5	4	4

注释:

1.主臂长度超过74m的“*”处组合需使用腰绳,主臂长度超过77m推荐使用斜楔辅助起臂。

Note:

1.For areas with “*”, when boom length exceeds 74m, center hitch needs to be used; when boom length exceeds 77m, wedge needs to be used to assist boom raising.

典型工况 Typical Working Conditions

1.1 主臂工况_无臂端滑轮(HB/1)的主臂主钩特性

1.1 Boom working condition _ boom main hook (without boom single top, HB/1)

主臂工况_无臂端滑轮HB/1_65t+30t的主臂主钩性能

Boom working condition _ boom main hook lifting capacity table (without boom single top, HB/1_65t+30t)

作业半径 (m) Working radius (m)	主臂长度 (m) Boom length (m)										
	23	26	29	32	35	38	41	44	47	50	53
5.5	231.8										
6	207.9	207.9	207.8								
7	172	172	171.8	171.9	171.7	165.7					
8	146.4	146.4	146.2	146.2	146	142.3	138	133.9			
9	127.2	127.2	127	127	126.8	124.4	121	117.8	114.7	111.7	108.9
10	112.2	112.2	112.1	112.1	111.9	110.4	107.6	105	102.4	99.9	97.6
11	100.3	100.3	100.1	100.2	100	99.1	96.7	94.5	92.4	90.3	88.2
12	90.8	90.8	90.6	90.6	90.4	89.7	87.7	85.9	84	82.2	80.4
13	82.8	82.9	82.8	82.8	82.6	81.9	80.1	78.5	76.9	75.3	73.8
14	74.3	74.4	74.4	74.4	74.4	74.3	73.7	72.3	70.8	69.4	68
15	67.2	67.4	67.3	67.4	67.3	67.2	67.1	66.9	65.5	64.3	63
16	61.3	61.4	61.4	61.5	61.4	61.3	61.2	61.1	60.9	59.8	58.6
17	56.3	56.4	56.3	56.4	56.3	56.2	56.1	56	55.8	55.7	54.8
18	51.9	52	52	52.1	51.9	51.9	51.7	51.6	51.5	51.3	51.1
19	48.1	48.2	48.2	48.3	48.1	48	47.9	47.8	47.6	47.5	47.3
20	44.7	44.9	44.8	44.9	44.8	44.7	44.5	44.4	44.3	44.1	43.9
22		39.2	39.2	39.3	39.2	39.1	38.9	38.8	38.6	38.5	38.2
24		34.6	34.6	34.8	34.6	34.5	34.3	34.3	34.1	33.9	33.7
26			30.8	31	30.9	30.8	30.6	30.5	30.3	30.1	29.9
28				27.8	27.7	27.6	27.4	27.4	27.2	27	26.8
30					25	25	24.8	24.7	24.5	24.3	24.1
32					22.7	22.6	22.5	22.4	22.2	22	21.8
34						20.6	20.4	20.4	20.2	20	19.8
36							18.7	18.6	18.4	18.3	18
38								17.1	16.9	16.7	16.5
40								15.7	15.5	15.3	15.1
42									14.2	14	13.8
44										12.9	12.7
46											11.6
倍率 Parts of line	24	22	20	18	16	15	14	13	12	11	10

注释:

1.主臂长度超过74m的“*”处组合需使用腰绳,主臂长度超过77m推荐使用斜楔辅助起臂。

Note:

1.For areas with “*”, when boom length exceeds 74m, center hitch needs to be used; when boom length exceeds 77m, wedge needs to be used to assist boom raising.

1.1 主臂工况_无臂端滑轮(HB/1)的主臂主钩特性

1.1 Boom working condition _ boom main hook (without boom single top, HB/1)

主臂工况_无臂端滑轮HB/1_65t+30t的主臂主钩性能 (续前)

Boom working condition _ boom main hook lifting capacity table (without boom single top, HB/1_65t+30t)

作业半径 (m) Working radius (m)	主臂长度 (m) Boom length (m)									
	56	59	62	65	68	71	74	77*	80*	83*
10	95.6	93.4	91.2							
11	86.6	84.7	82.9	81.1	78.8	71				
12	79.1	77.4	75.8	74.2	72.6	69.8	62.8	61.2	56	
13	72.6	71.2	69.7	68.3	66.9	65.7	61.8	60.4	55.3	50.8
14	67.1	65.7	64.4	63.2	61.9	60.8	59.6	58.6	54.6	50.1
15	62.2	61	59.8	58.7	57.5	56.5	55.4	54.5	53.5	49.4
16	57.9	56.8	55.8	54.7	53.6	52.7	51.7	50.9	49.9	48.8
17	54.1	53.1	52.2	51.2	50.2	49.4	48.4	47.7	46.7	45.9
18	50.8	49.8	48.9	48	47.1	46.3	45.4	44.8	43.9	43.1
19	47.4	46.8	46	45.1	44.3	43.6	42.7	42.1	41.3	40.6
20	44.1	43.9	43.4	42.5	41.7	41.1	40.3	39.7	38.9	38.3
22	38.4	38.2	38	37.8	37.3	36.7	36	35.5	34.8	34.2
24	33.8	33.6	33.4	33.2	33	32.9	32.4	31.9	31.3	30.7
26	30.1	29.9	29.7	29.4	29.2	29.1	28.8	28.8	28.3	27.8
28	27	26.7	26.5	26.3	26	25.9	25.7	25.6	25.4	25.2
30	24.3	24	23.8	23.6	23.3	23.2	23	22.9	22.7	22.5
32	22	21.7	21.5	21.3	21	20.9	20.6	20.6	20.3	20.2
34	20	19.7	19.5	19.3	19	18.9	18.6	18.6	18.3	18.1
36	18.2	18	17.8	17.5	17.2	17.1	16.9	16.9	16.5	16.4
38	16.6	16.4	16.2	15.9	15.7	15.5	15.3	15.2	15	14.8
40	15.3	15	14.8	14.5	14.3	14.1	13.9	13.8	13.6	13.4
42	14	13.8	13.6	13.3	13	12.9	12.6	12.6	12.3	12.2
44	12.9	12.6	12.4	12.2	11.9	11.8	11.5	11.5	11.2	11
46	11.8	11.6	11.4	11.1	10.9	10.7	10.5	10.4	10.2	10
48	10.9	10.7	10.5	10.2	9.9	9.8	9.5	9.5	9.2	9.1
50	10	9.8	9.6	9.3	9.1	8.9	8.7	8.6	8.4	8.2
52		9	8.8	8.5	8.3	8.2	7.9	7.9	7.6	7.4
54			8.1	7.8	7.6	7.4	7.2	7.1	6.9	6.7
56				7.1	6.9	6.8	6.5	6.5	6.2	6
58				6.5	6.3	6.1	5.9	5.8	5.6	5.4
60					5.7	5.5	5.3	5.3	5	4.8
62						5	4.7	4.7	4.4	4.3
64							4.2	4.2	3.9	3.8
66							3.7	3.7	3.5	3.3
68								3.3	3	2.8
70									2.6	2.4
72										2
倍率 Parts of line	9	9	8	7	7	6	5	5	5	4

注释:

1.主臂长度超过74m的“*”处组合需使用腰绳,主臂长度超过77m推荐使用斜楔辅助起臂。

Note:

1.For areas with “*”, when boom length exceeds 74m, center hitch needs to be used; when boom length exceeds 77m, wedge needs to be used to assist boom raising.

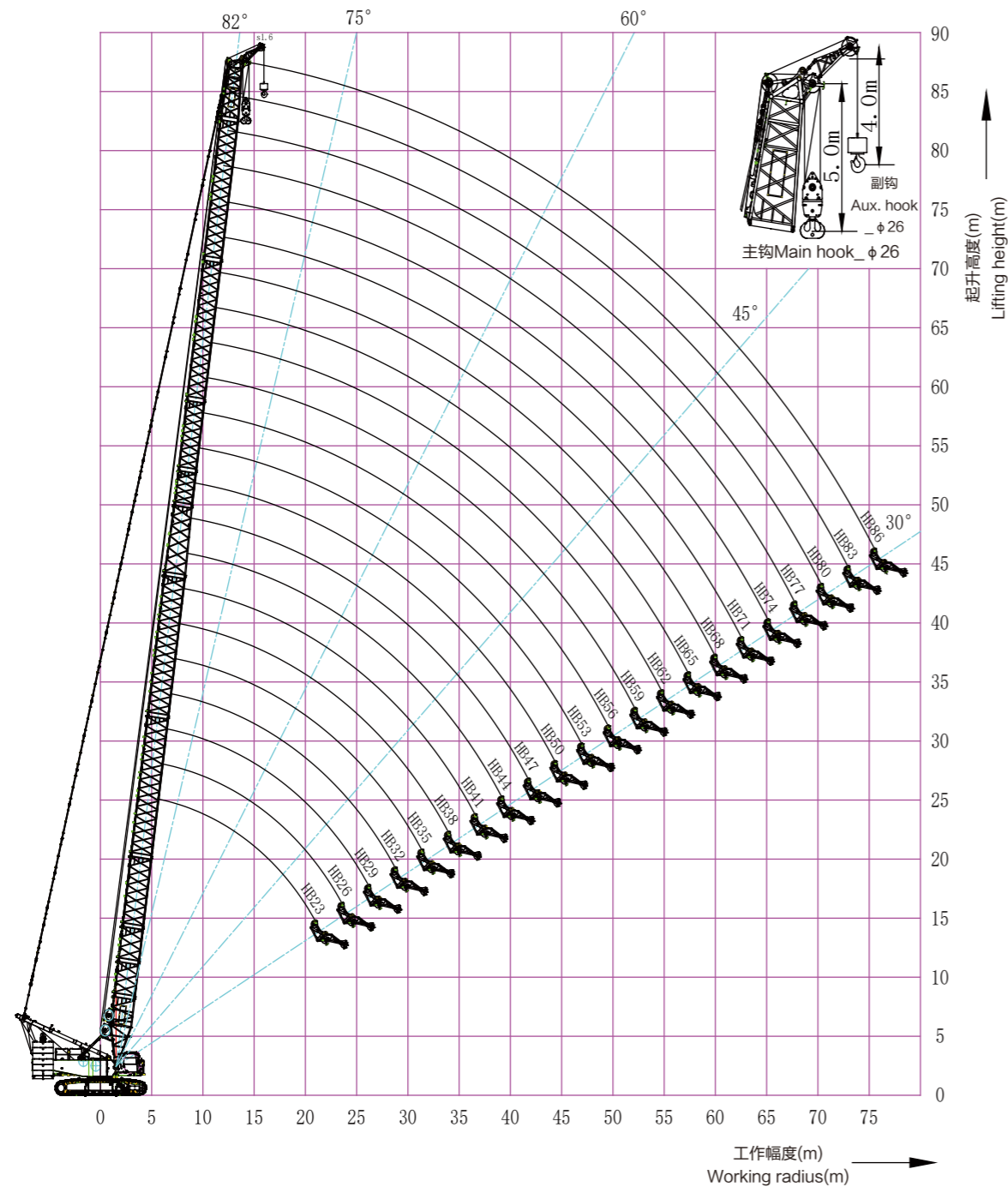
典型工况 Typical Working Conditions

1.2主臂工况_带臂端滑轮副钩(HBS/1)的主臂主钩特性

1.2 Boom working condition_boom main hook (with boom single top aux. hook, HBS/1)

主臂工况_带臂端滑轮副钩(HBS/1)的主臂主钩工作范围图

Boom working condition_boom main hook working range (with boom single top, HBS/1)



主臂工况_带臂端滑轮(HBS/1)的主臂主钩工作范围图

Boom working condition_boom main hook working range (with boom single top, HBS/1)

1.2主臂工况_带臂端滑轮副钩(HBS/1)的主臂主钩特性

1.2 Boom working condition_boom main hook (with boom single top aux. hook, HBS/1)

主臂工况_带臂端滑轮副钩HBS/1_85t+30t的主臂主钩性能

Boom working condition_boom main hook lifting capacity table (with boom single top aux. hook, HBS/1_85t+30)

作业半径 (m) Working radius (m)	主臂长度 (m) Boom length (m)										
	23	26	29	32	35	38	41	44	47	50	53
5.5	260										
6	229.1	229.1	214.2								
7	189.4	189.4	189.2	189.3	183.9	172.9					
8	161	161	160.9	160.9	160.7	160.6	160.4	150.4			
9	139.8	139.8	139.6	139.7	139.5	139.3	139.1	137.3	133.7	127.2	126.9
10	123.3	123.3	123.1	123.2	123	122.8	122.6	122.3	119.3	116.5	113.7
11	110.1	110.1	109.9	110	109.8	109.6	109.4	109.3	107.6	105.2	102.8
12	99.3	99.3	99.1	99.2	99	98.8	98.6	98.5	97.8	95.7	93.7
13	90.3	90.3	90.1	90.2	90	89.8	89.6	89.5	89.2	87.7	85.9
14	82.7	82.7	82.5	82.6	82.4	82.2	82	81.9	81.6	80.8	79.2
15	76.2	76.3	76.1	76.1	75.9	75.7	75.4	75.1	74.8	74.8	73.4
16	70.8	70.8	70.6	70.6	70.4	70.2	70	69.6	69.6	69.4	68.3
17	65.4	65.5	65.4	65.5	65.4	65.3	65.2	65.1	64.8	64.6	63.8
18	60.3	60.4	60.3	60.4	60.3	60.2	60.1	60	59.8	59.7	59.5
19	55.8	56	55.9	56	55.9	55.8	55.6	55.5	55.4	55.2	55
20	51.9	52	52	52.1	52	51.9	51.7	51.6	51.4	51.3	51.1
22		45.5	45.4	45.5	45.4	45.3	45.1	45	44.8	44.7	44.5
24		40.1	40.1	40.2	40.1	40	39.8	39.7	39.5	39.4	39.1
26			35.7	35.8	35.7	35.6	35.4	35.4	35.2	35	34.8
28				32.2	32	32	31.8	31.7	31.5	31.3	31.1
30					28.9	28.8	28.7	28.6	28.4	28.2	28
32					26.2	26.2	26	25.9	25.7	25.5	25.3
34						23.8	23.6	23.6	23.4	23.2	23
36							21.6	21.5	21.3	21.1	20.9
38								19.7	19.5	19.3	19.1
40									18.1	17.9	17.5
42										16.4	16
44											14.9
46											
倍率 Parts of line	24	22	20	18	16	15	14	13	12	11	10

注释:

1.主臂长度超过74m的“*”处组合需使用腰绳,主臂长度超过77m推荐使用斜楔辅助起臂。

Note:

1.For areas with “*”, when boom length exceeds 74m, center hitch needs to be used; when boom length exceeds 77m, wedge needs to be used to assist boom raising.

典型工况 Typical Working Conditions

1.2主臂工况_带臂端滑轮副钩(HBS/1)的主臂主钩特性

1.2 Boom working condition_boom main hook (with boom single top aux. hook, HBS/1)

主臂工况_带臂端滑轮副钩HBS/1_85t+30t的主臂主钩性能 (续前)

Boom working condition _boom main hook lifting capacity table (with boom single top aux. hook, HBS/1_85t+30)

作业半径 (m) Working radius (m)	主臂长度 (m) Boom length (m)										
	56	59	62	65	68	71	74	77*	80*	83*	86*
10	111.4	108.2	98								
11	100.9	98.7	96.5	87.7	78.5	70.6					
12	92.1	90.1	88.3	86.3	77.2	69.4	62.5	60.3	55.2		
13	84.6	82.9	81.2	79.6	76	68.3	61.4	59.5	54.5	50	45.9
14	78.1	76.6	75.1	73.7	72.2	67.2	60.4	58.6	53.7	49.3	45.2
15	72.4	71.1	69.7	68.4	67.1	66	59.3	57.8	52.9	48.6	44.6
16	67.4	66.2	65	63.8	62.6	61.5	58.3	57	52.2	47.9	44
17	63	61.9	60.8	59.7	58.6	57.6	56.5	55.7	51.5	47.2	43.4
18	59.1	58	57	56	54.9	54.1	53.1	52.3	50.8	46.6	42.8
19	55.2	54.5	53.6	52.6	51.7	50.8	49.9	49.2	48.3	45.9	42.2
20	51.2	51	50.5	49.6	48.7	47.9	47.1	46.4	45.6	44.8	41.6
22	44.6	44.4	44.2	44	43.5	42.9	42.1	41.5	40.7	40.1	39.3
24	39.3	39.1	38.9	38.7	38.4	38.3	37.8	37.4	36.6	36	35.3
26	34.9	34.7	34.5	34.3	34	33.9	33.7	33.6	33.1	32.6	31.9
28	31.3	31	30.8	30.6	30.4	30.2	30	29.9	29.7	29.5	29
30	28.2	27.9	27.7	27.5	27.2	27.1	26.8	26.8	26.5	26.4	26.1
32	25.5	25.2	25	24.8	24.5	24.4	24.1	24.1	23.8	23.7	23.4
34	23.1	22.9	22.7	22.4	22.2	22.1	21.8	21.8	21.5	21.3	21.1
36	21.1	20.9	20.6	20.4	20.1	20	19.7	19.7	19.4	19.3	19
38	19.3	19	18.8	18.6	18.3	18.2	17.9	17.9	17.6	17.4	17.2
40	17.7	17.4	17.2	16.9	16.7	16.6	16.3	16.2	16	15.8	15.5
42	16.2	16	15.8	15.5	15.2	15.1	14.8	14.8	14.5	14.4	14.1
44	14.9	14.6	14.4	14.2	13.9	13.8	13.5	13.5	13.2	13	12.8
46	13.7	13.4	13.2	13	12.7	12.6	12.3	12.3	12	11.8	11.6
48	12.6	12.4	12.2	11.9	11.6	11.5	11.2	11.2	10.9	10.8	10.5
50	11.6	11.4	11.2	10.9	10.6	10.5	10.2	10.2	9.9	9.8	9.5
52		10.4	10.2	10	9.7	9.6	9.3	9.3	9	8.8	8.6
54			9.4	9.1	8.9	8.7	8.5	8.4	8.2	8	7.7
56				8.3	8.1	8	7.7	7.7	7.4	7.2	6.9
58				7.6	7.4	7.2	7	6.9	6.7	6.5	6.2
60					6.7	6.6	6.3	6.3	6	5.8	5.6
62						5.9	5.7	5.6	5.4	5.2	4.9
64							5.1	5	4.8	4.6	4.3
66							4.5	4.5	4.2	4.1	3.8
68								4	3.7	3.5	3.3
70									3.2	3	2.8
72										2.6	2.3
倍率 Parts of line	9	9	8	7	7	6	5	5	5	4	4

注释:

1.主臂长度超过74m的“*”处组合需使用腰绳,主臂长度超过77m推荐使用斜楔辅助起臂。

Note:

1.For areas with “*”, when boom length exceeds 74m, center hitch needs to be used; when boom length exceeds 77m, wedge needs to be used to assist boom raising.

1.2主臂工况_带臂端滑轮副钩(HBS/1)的主臂主钩特性

1.2 Boom working condition_boom main hook (with boom single top aux. hook, HBS/1)

主臂工况_带臂端滑轮副钩HBS/1_75t+30t的主臂主钩性能

Boom working condition _boom main hook lifting capacity table (with boom single top aux. hook, HBS/1_75t+30)

作业半径 (m) Working radius (m)	主臂长度 (m) Boom length (m)										
	23	26	29	32	35	38	41	44	47	50	53
5.5	242.8										
6	217.6	217.6	214.2								
7	179.8	179.8	179.7	179.7	179.5	171.4					
8	152.8	152.8	152.7	152.7	152.5	152.4	148.4	144			
9	132.6	132.6	132.5	132.5	132.3	132.2	130.1	126.6	123.2	120	116.9
10	116.9	116.9	116.8	116.8	116.6	116.5	115.5	112.7	109.9	107.3	104.7
11	104.4	104.4	104.2	104.2	104	103.9	103.7	101.4	99	96.8	94.6
12	94.1	94.1	93.9	94	93.8	93.6	93.4	92	90	88	86.1
13	85.6	85.6	85.4	85.4	85.2	85.1	84.8	84	82.3	80.6	78.9
14	78.6	78.6	78.4	78.4	78.2	78	77.8	77.3	75.7	74.2	72.7
15	71.9	72	72	72.1	72	71.9	71.8	71.4	70	68.7	67.3
16	65.5	65.6	65.6	65.6	65.5	65.5	65.3	65.2	65	63.8	62.6
17	60	60.1	60.1	60.2	60.1	60	59.8	59.7	59.6	59.4	58.4
18	55.3	55.4	55.3	55.4	55.3	55.2	55.1	55	54.8	54.7	54.5
19	51.1	51.3	51.2	51.3	51.2	51.1	50.9	50.9	50.7	50.5	50.3
20	47.5	47.7	47.6	47.7	47.6	47.5	47.3	47.2	47	46.9	46.7
22		41.5	41.5	41.6	41.5	41.4	41.2	41.1	40.9	40.8	40.6
24		36.6	36.6	36.7	36.6	36.5	36.3	36.2	36	35.8	35.6
26			32.5	32.6	32.5	32.4	32.2	32.2	32	31.8	31.6
28				29.2	29.1	29	28.8	28.8	28.5	28.4	28.1
30					26.2	26.1	25.9	25.9	25.7	25.5	25.2
32					23.7	23.6	23.4	23.4	23.2	23	22.8
34						21.4	21.2	21.2	21	20.8	20.6
36							19.3	19.3	19.1	18.9	18.7
38								17.6	17.4	17.2	17
40								16.1	15.9	15.7	15.5
42									14.5	14.4	14.1
44										13.1	12.9
46											11.8
倍率 Parts of line	24	22	20	18	16	15	14	13	12	11	10

注释:

1.主臂长度超过74m的“*”处组合需使用腰绳,主臂长度超过77m推荐使用斜楔辅助起臂。

Note:

1.For areas with “*”, when boom length exceeds 74m, center hitch needs to be used; when boom length exceeds 77m, wedge needs to be used to assist boom raising.

典型工况 Typical Working Conditions

1.2主臂工况_带臂端滑轮副钩(HBS/1)的主臂主钩特性

1.2 Boom working condition_boom main hook (with boom single top aux. hook, HBS/1)

主臂工况_带臂端滑轮副钩HBS/1_75t+30t的主臂主钩性能 (续前)

Boom working condition _boom main hook lifting capacity table (with boom single top aux. hook, HBS/1_75t+30)

作业半径 (m) Working radius (m)	主臂长度 (m) Boom length (m)									
	56	59	62	65	68	71	74	77*	80*	83*
10	102.5	100.2	97.8							
11	92.8	90.8	88.8	86.9	78.5	70.6				
12	84.7	82.9	81.1	79.4	77.2	69.4	62.5	60.3	55.2	
13	77.7	76.1	74.6	73.1	71.6	68.3	61.4	59.5	54.5	50
14	71.6	70.2	68.9	67.5	66.2	65	60.4	58.6	53.7	49.3
15	66.4	65.1	63.9	62.6	61.4	60.3	59.2	57.8	52.9	48.6
16	61.8	60.6	59.5	58.3	57.2	56.2	55.1	54.3	52.2	47.9
17	57.7	56.6	55.5	54.5	53.5	52.6	51.5	50.8	49.8	47.2
18	54	53	52	51.1	50.1	49.3	48.3	47.6	46.7	45.9
19	50.5	49.8	48.9	48	47.1	46.3	45.4	44.8	43.9	43.1
20	46.8	46.7	46	45.2	44.3	43.6	42.8	42.2	41.3	40.6
22	40.7	40.5	40.3	40.1	39.5	38.9	38.1	37.6	36.9	36.2
24	35.8	35.6	35.4	35.1	34.9	34.8	34.2	33.7	33.1	32.5
26	31.7	31.5	31.3	31.1	30.8	30.7	30.5	30.4	29.8	29.3
28	28.3	28.1	27.9	27.6	27.4	27.3	27	27	26.7	26.5
30	25.4	25.2	25	24.7	24.5	24.4	24.1	24.1	23.8	23.7
32	22.9	22.7	22.5	22.2	22	21.9	21.6	21.6	21.3	21.1
34	20.8	20.5	20.3	20.1	19.8	19.7	19.4	19.4	19.1	19
36	18.9	18.6	18.4	18.2	17.9	17.8	17.5	17.5	17.2	17
38	17.1	16.9	16.7	16.5	16.2	16.1	15.8	15.8	15.5	15.3
40	15.7	15.4	15.2	15	14.7	14.6	14.3	14.3	14	13.8
42	14.3	14.1	13.9	13.6	13.3	13.2	12.9	12.9	12.6	12.5
44	13.1	12.9	12.6	12.4	12.1	12	11.7	11.7	11.4	11.2
46	12	11.7	11.5	11.3	11	10.9	10.6	10.6	10.3	10.1
48	11	10.7	10.5	10.3	10	9.9	9.6	9.6	9.3	9.1
50	10	9.8	9.6	9.3	9.1	8.9	8.7	8.6	8.4	8.2
52		8.9	8.7	8.5	8.2	8.1	7.8	7.8	7.5	7.4
54			8	7.7	7.4	7.3	7	7	6.7	6.6
56				7	6.7	6.6	6.3	6.3	6	5.8
58				6.3	6	5.9	5.6	5.6	5.3	5.2
60					5.4	5.3	5	5	4.7	4.5
62						4.7	4.4	4.4	4.1	4
64							3.9	3.8	3.6	3.4
66							3.3	3.3	3.1	2.9
68								2.8	2.6	2.4
70									2.1	2
倍率 Parts of line	9	9	8	7	7	6	5	5	5	4

注释:

1.主臂长度超过74m的“*”处组合需使用腰绳,主臂长度超过77m推荐使用斜楔辅助起臂。

Note:

1.For areas with “*”, when boom length exceeds 74m, center hitch needs to be used; when boom length exceeds 77m, wedge needs to be used to assist boom raising.

1.2主臂工况_带臂端滑轮副钩(HBS/1)的主臂主钩特性

1.2 Boom working condition_boom main hook (with boom single top aux. hook, HBS/1)

主臂工况_带臂端滑轮副钩HBS/1_65t+30t的主臂主钩性能

Boom working condition _boom main hook lifting capacity table (with boom single top aux. hook, HBS/1_65t+30)

作业半径 (m) Working radius (m)	主臂长度 (m) Boom length (m)										
	23	26	29	32	35	38	41	44	47	50	53
5.5	230										
6	206.1	206.1	206								
7	170.2	170.2	170.1	170.1	169.7	163.7					
8	144.6	144.6	144.5	144.5	144.3	140.3	136.1	132			
9	125.5	125.5	125.3	125.3	125.1	122.5	119.1	115.9	112.8	109.8	107
10	110.6	110.6	110.4	110.4	110.2	108.5	105.7	103.1	100.6	98.1	95.7
11	98.6	98.7	98.5	98.5	98.3	97.2	94.9	92.7	90.5	88.4	86.4
12	89.1	89.1	88.9	89	88.7	87.9	85.9	84	82.1	80.3	78.6
13	81.1	81.2	81.1	81.2	80.9	80	78.3	76.7	75.1	73.5	71.9
14	72.6	72.8	72.7	72.8	72.7	72.7	71.8	70.4	69	67.6	66.2
15	65.6	65.7	65.7	65.8	65.7	65.6	65.5	65	63.7	62.5	61.2
16	59.7	59.8	59.8	59.9	59.8	59.7	59.5	59.5	59.1	58	56.8
17	54.6	54.8	54.7	54.8	54.7	54.6	54.5	54.4	54.2	54	52.9
18	50.3	50.4	50.4	50.5	50.3	50.2	50.1	50	49.8	49.7	49.5
19	46.5	46.6	46.6	46.7	46.5	46.4	46.3	46.2	46	45.9	45.7
20	43.1	43.3	43.2	43.3	43.2	43.1	42.9	42.8	42.7	42.5	42.3
22		37.6	37.6	37.7	37.6	37.5	37.3	37.2	37	36.9	36.6
24		33	33	33.2	33	32.9	32.7	32.7	32.5	32.3	32.1
26			29.3	29.4	29.3	29.2	29	28.9	28.7	28.6	28.3
28				26.3	26.1	26.1	25.9	25.8	25.6	25.4	25.2
30					23.5	23.4	23.2	23.1	22.9	22.8	22.5
32					21.1	21.1	20.9	20.8	20.6	20.5	20.2
34						19	18.9	18.8	18.6	18.4	18.2
36							17.1	17.1	16.9	16.7	16.4
38								15.5	15.3	15.1	14.9
40								14.1	13.9	13.7	13.5
42									12.6	12.5	12.2
44										11.3	11.1
46											10.1
倍率 Parts of line	24	22	20	18	16	15	14	13	12	11	10

注释:

1.主臂长度超过74m的“*”处组合需使用腰绳,主臂长度超过77m推荐使用斜楔辅助起臂。

Note:

1.For areas with “*”, when boom length exceeds 74m, center hitch needs to be used; when boom length exceeds 77m, wedge needs to be used to assist boom raising.

典型工况 Typical Working Conditions

1.2主臂工况_带臂端滑轮副钩(HBS/1)的主臂主钩特性

1.2 Boom working condition_boom main hook (with boom single top aux. hook, HBS/1)

主臂工况_带臂端滑轮副钩HBS/1_65t+30t的主臂主钩性能 (续前)

Boom working condition_boom main hook lifting capacity table (with boom single top aux. hook, HBS/1_65t+30)

作业半径 (m) Working radius (m)	主臂长度 (m) Boom length (m)								
	56	59	62	65	68	71	74	77*	80*
10	93.7	91.5	89.4						
11	84.8	82.9	81	79.2	77.4	70.6			
12	77.2	75.6	73.9	72.4	70.8	69.4	62.5	60.3	55.2
13	70.8	69.3	67.9	66.5	65.1	63.8	61.4	59.5	54.5
14	65.2	63.9	62.6	61.4	60.1	59	57.8	56.8	53.7
15	60.4	59.2	58	56.9	55.7	54.7	53.6	52.7	51.6
16	56.1	55	54	52.9	51.8	50.9	49.9	49.1	48.1
17	52.3	51.3	50.3	49.4	48.4	47.5	46.6	45.9	44.9
18	48.9	48	47.1	46.2	45.3	44.5	43.6	42.9	42.1
19	45.8	45	44.2	43.3	42.5	41.7	40.9	40.3	39.5
20	42.5	42.3	41.5	40.7	39.9	39.3	38.5	37.9	37.1
22	36.8	36.6	36.4	36.2	35.5	34.9	34.2	33.7	33
24	32.3	32	31.8	31.6	31.4	31.2	30.6	30.1	29.5
26	28.5	28.3	28.1	27.8	27.6	27.5	27.2	27.1	26.5
28	25.4	25.1	24.9	24.7	24.4	24.3	24.1	24	23.8
30	22.7	22.5	22.3	22	21.8	21.6	21.4	21.3	21.1
32	20.4	20.2	19.9	19.7	19.4	19.3	19.1	19	18.8
34	18.4	18.2	17.9	17.7	17.4	17.3	17	17	16.7
36	16.6	16.4	16.2	15.9	15.7	15.5	15.3	15.2	15
38	15.1	14.8	14.6	14.4	14.1	14	13.7	13.7	13.4
40	13.7	13.4	13.2	13	12.7	12.6	12.3	12.3	12
42	12.4	12.2	12	11.7	11.5	11.3	11.1	11	10.8
44	11.3	11.1	10.9	10.6	10.3	10.2	9.9	9.9	9.6
46	10.3	10	9.8	9.6	9.3	9.2	8.9	8.9	8.6
48	9.3	9.1	8.9	8.6	8.4	8.2	8	7.9	7.7
50	8.5	8.2	8	7.8	7.5	7.4	7.1	7.1	6.8
52		7.4	7.2	7	6.7	6.6	6.3	6.3	6
54			6.5	6.3	6	5.9	5.6	5.6	5.3
56				5.6	5.3	5.2	4.9	4.9	4.6
58				5	4.7	4.6	4.3	4.3	4
60					4.1	4	3.7	3.7	3.4
62						3.4	3.2	3.2	2.9
64							2.7	2.6	2.4
66							2.2	2.2	
倍率 Parts of line	9	9	8	7	7	6	5	5	5

注释:
1.主臂长度超过74m的“*”处组合需使用腰绳,主臂长度超过77m推荐使用斜楔辅助起臂。

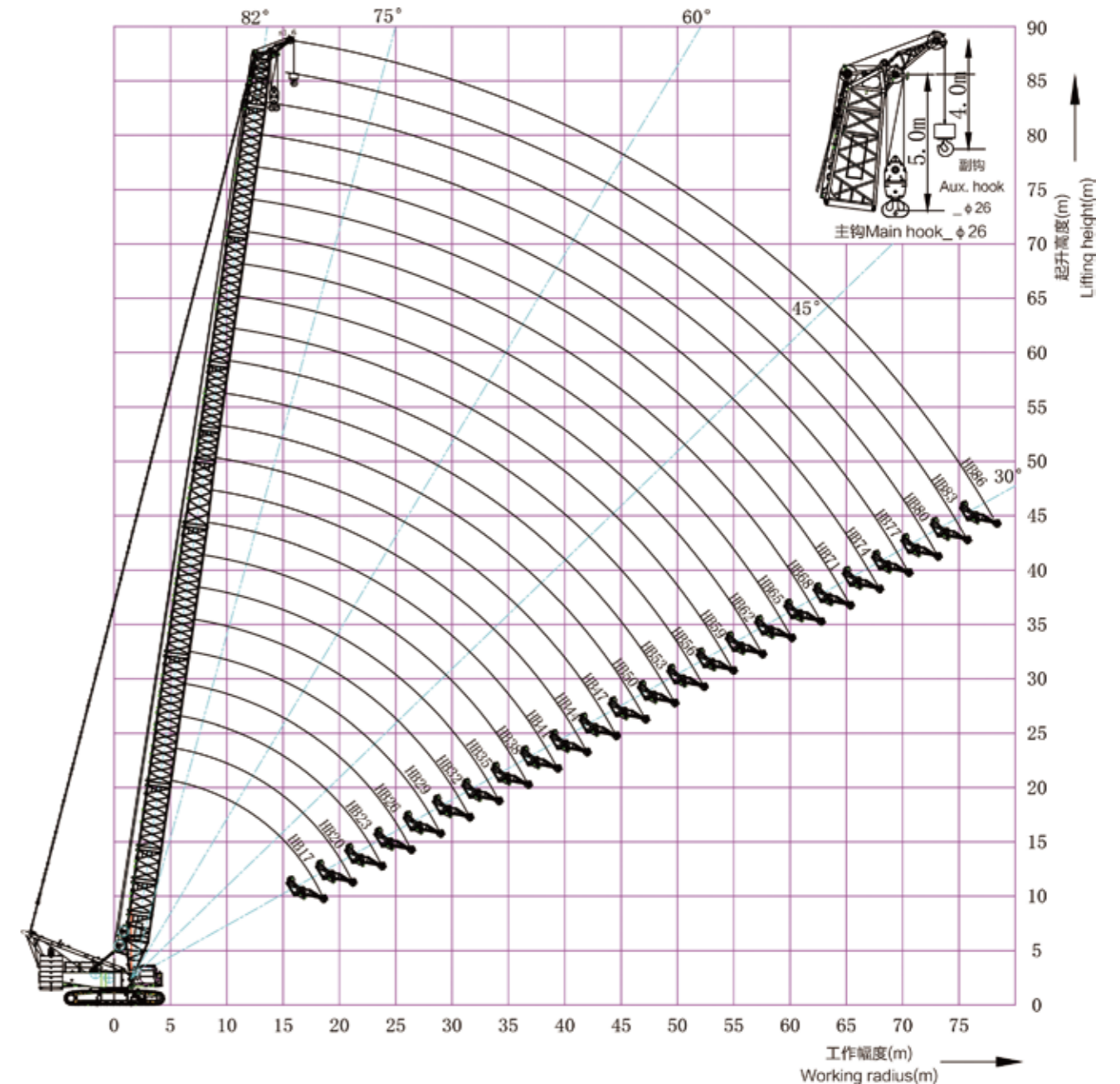
Note:
1.For areas with “*”, when boom length exceeds 74m, center hitch needs to be used;
when boom length exceeds 77m, wedge needs to be used to assist boom raising.

1.3主臂工况_带主臂主钩(HBS/2)的臂端滑轮副钩特性

1.3 Boom working condition_boom single top aux. hook (with boom main hook, HBS/2)

主臂工况_带主臂主钩(HBS/2)的臂端滑轮副钩工作范围图

Boom working condition_boom single top aux. hook working range (with boom main hook, HBS/2)



主臂工况_带主臂主钩(HBS/2)的臂端滑轮副钩工作范围图

Boom working condition_boom single top aux. hook working range (with boom main hook, HBS/2)

典型工况 Typical Working Conditions

1.3主臂工况_带主臂主钩(HBS/2)的臂端滑轮副钩特性

1.3 Boom working condition_boom single top aux. hook (with boom main hook, HBS/2)

主臂工况_带主臂主钩HBS/2_85t+30t的臂端滑轮副钩性能

Boom working condition _boom single top aux. hook lifting capacity table (with boom main hook, HBS/2_85t+30t)

作业半径 (m) Working radius (m)	主臂长度 (m) Boom length (m)											
	23	26	29	32	35	38	41	44	47	50	53	
7	13.5	13.5										
8	13.5	13.5	13.5	13.5	13.5							
9	13.5	13.5	13.5	13.5	13.5	13.5	13.5					
10	13.5	13.5	13.5	13.5	13.5	13.5	13.5	13.5	13.5	13.5		
11	13.5	13.5	13.5	13.5	13.5	13.5	13.5	13.5	13.5	13.5	13.5	
12	13.5	13.5	13.5	13.5	13.5	13.5	13.5	13.5	13.5	13.5	13.5	
13	13.5	13.5	13.5	13.5	13.5	13.5	13.5	13.5	13.5	13.5	13.5	
14	13.5	13.5	13.5	13.5	13.5	13.5	13.5	13.5	13.5	13.5	13.5	
15	13.5	13.5	13.5	13.5	13.5	13.5	13.5	13.5	13.5	13.5	13.5	
16	13.5	13.5	13.5	13.5	13.5	13.5	13.5	13.5	13.5	13.5	13.5	
17	13.5	13.5	13.5	13.5	13.5	13.5	13.5	13.5	13.5	13.5	13.5	
18	13.5	13.5	13.5	13.5	13.5	13.5	13.5	13.5	13.5	13.5	13.5	
19	13.5	13.5	13.5	13.5	13.5	13.5	13.5	13.5	13.5	13.5	13.5	
20	13.5	13.5	13.5	13.5	13.5	13.5	13.5	13.5	13.5	13.5	13.5	
22	13.5	13.5	13.5	13.5	13.5	13.5	13.5	13.5	13.5	13.5	13.5	
24		13.5	13.5	13.5	13.5	13.5	13.5	13.5	13.5	13.5	13.5	
26		13.5	13.5	13.5	13.5	13.5	13.5	13.5	13.5	13.5	13.5	
28			13.5	13.5	13.5	13.5	13.5	13.5	13.5	13.5	13.5	
30				13.5	13.5	13.5	13.5	13.5	13.5	13.5	13.5	
32					13.5	13.5	13.5	13.5	13.5	13.5	13.5	
34					13.5	13.5	13.5	13.5	13.5	13.5	13.5	
36						13.5	13.5	13.5	13.5	13.5	13.5	
38							13.5	13.5	13.5	13.5	13.5	
40								13.5	13.5	13.5	13.5	
42									13.5	13.5	13.5	
44										13.5	13.5	
46											12.9	
48												11.6
倍率 Parts of line	1	1	1	1	1	1	1	1	1	1	1	

注释:

1.主臂长度超过74m的“*”处组合需使用腰绳,主臂长度超过77m推荐使用斜楔辅助起臂。

Note:

1.For areas with “*”, when boom length exceeds 74m, center hitch needs to be used; when boom length exceeds 77m, wedge needs to be used to assist boom raising.

1.3主臂工况_带主臂主钩(HBS/2)的臂端滑轮副钩特性

1.3 Boom working condition_boom single top aux. hook (with boom main hook, HBS/2)

主臂工况_带主臂主钩HBS/2_85t+30t的臂端滑轮副钩性能 (续前)

Boom working condition _boom single top aux. hook lifting capacity table (with boom main hook, HBS/2_85t+30t)

作业半径 (m) Working radius (m)	主臂长度 (m) Boom length (m)										
	56	59	62	65	68	71	74	77*	80*	83*	86*
11	13.5	13.5									
12	13.5	13.5	13.5	13.5	13.5						
13	13.5	13.5	13.5	13.5	13.5	13.5	13.5				
14	13.5	13.5	13.5	13.5	13.5	13.5	13.5	13.5	13.5	13.5	
15	13.5	13.5	13.5	13.5	13.5	13.5	13.5	13.5	13.5	13.5	13.5
16	13.5	13.5	13.5	13.5	13.5	13.5	13.5	13.5	13.5	13.5	13.5
17	13.5	13.5	13.5	13.5	13.5	13.5	13.5	13.5	13.5	13.5	13.5
18	13.5	13.5	13.5	13.5	13.5	13.5	13.5	13.5	13.5	13.5	13.5
19	13.5	13.5	13.5	13.5	13.5	13.5	13.5	13.5	13.5	13.5	13.5
20	13.5	13.5	13.5	13.5	13.5	13.5	13.5	13.5	13.5	13.5	13.5
22	13.5	13.5	13.5	13.5	13.5	13.5	13.5	13.5	13.5	13.5	13.5
24	13.5	13.5	13.5	13.5	13.5	13.5	13.5	13.5	13.5	13.5	13.5
26	13.5	13.5	13.5	13.5	13.5	13.5	13.5	13.5	13.5	13.5	13.5
28	13.5	13.5	13.5	13.5	13.5	13.5	13.5	13.5	13.5	13.5	13.5
30	13.5	13.5	13.5	13.5	13.5	13.5	13.5	13.5	13.5	13.5	13.5
32	13.5	13.5	13.5	13.5	13.5	13.5	13.5	13.5	13.5	13.5	13.5
34	13.5	13.5	13.5	13.5	13.5	13.5	13.5	13.5	13.5	13.5	13.5
36	13.5	13.5	13.5	13.5	13.5	13.5	13.5	13.5	13.5	13.5	13.5
38	13.5	13.5	13.5	13.5	13.5	13.5	13.5	13.5	13.5	13.5	13.5
40	13.5	13.5	13.5	13.5	13.5	13.5	13.5	13.5	13.5	13.5	13.5
42	13.5	13.5	13.5	13.5	13.5	13.5	13.5	13.5	13.5	13.5	13.5
44	13.5	13.5	13.5	13.5	13.5	13.5	13.5	13.5	13.5	13.5	13.5
46	12.9	12.7	12.5	12.2	12	11.9	11.6	11.6	11.3	11.1	10.9
48	11.8	11.6	11.4	11.1	10.9	10.7	10.5	10.4	10.2	10	9.7
50	10.8	10.5	10.4	10.1	9.9	9.7	9.5	9.4	9.2	9	8.7
52	9.8	9.6	9.4	9.2	8.9	8.8	8.5	8.5	8.2	8.1	7.8
54		8.7	8.5	8.3	8	7.9	7.7	7.6	7.4	7.2	6.9
56			7.7	7.5	7.2	7.1	6.9	6.8	6.6	6.4	6.1
58				6.7	6.5	6.4	6.1	6.1	5.8	5.7	5.4
60					5.8	5.7	5.4	5.4	5.1	5	4.7
62						5.1	5	4.8	4.7	4.5	4.3
64							4.4	4.2	4.1	3.9	3.7
66								3.6	3.6	3.3	3.2
68									3	2.8	2.6
70										2.3	2.1
70											1.9
倍率 Parts of line	1	1	1	1	1	1	1	1	1	1	1

注释:

1.主臂长度超过74m的“*”处组合需使用腰绳,主臂长度超过77m推荐使用斜楔辅助起臂。

Note:

1.For areas with “*”, when boom length exceeds 74m, center hitch needs to be used; when boom length exceeds 77m, wedge needs to be used to assist boom raising.

典型工况 Typical Working Conditions

1.3主臂工况_带主臂主钩(HBS/2)的臂端滑轮副钩特性

1.3 Boom working condition_boom single top aux. hook (with boom main hook, HBS/2)

主臂工况_带主臂主钩HBS/2_75t+30t的臂端滑轮副钩性能

Boom working condition _boom single top aux. hook lifting capacity table (with boom main hook, HBS/2_75t+30t)

作业半径 (m) Working radius (m)	主臂长度 (m) Boom length (m)										
	23	26	29	32	35	38	41	44	47	50	53
7	13.5	13.5									
8	13.5	13.5	13.5	13.5	13.5						
9	13.5	13.5	13.5	13.5	13.5	13.5	13.5				
10	13.5	13.5	13.5	13.5	13.5	13.5	13.5	13.5	13.5	13.5	13.5
11	13.5	13.5	13.5	13.5	13.5	13.5	13.5	13.5	13.5	13.5	13.5
12	13.5	13.5	13.5	13.5	13.5	13.5	13.5	13.5	13.5	13.5	13.5
13	13.5	13.5	13.5	13.5	13.5	13.5	13.5	13.5	13.5	13.5	13.5
14	13.5	13.5	13.5	13.5	13.5	13.5	13.5	13.5	13.5	13.5	13.5
15	13.5	13.5	13.5	13.5	13.5	13.5	13.5	13.5	13.5	13.5	13.5
16	13.5	13.5	13.5	13.5	13.5	13.5	13.5	13.5	13.5	13.5	13.5
17	13.5	13.5	13.5	13.5	13.5	13.5	13.5	13.5	13.5	13.5	13.5
18	13.5	13.5	13.5	13.5	13.5	13.5	13.5	13.5	13.5	13.5	13.5
19	13.5	13.5	13.5	13.5	13.5	13.5	13.5	13.5	13.5	13.5	13.5
20	13.5	13.5	13.5	13.5	13.5	13.5	13.5	13.5	13.5	13.5	13.5
22	13.5	13.5	13.5	13.5	13.5	13.5	13.5	13.5	13.5	13.5	13.5
24		13.5	13.5	13.5	13.5	13.5	13.5	13.5	13.5	13.5	13.5
26		13.5	13.5	13.5	13.5	13.5	13.5	13.5	13.5	13.5	13.5
28			13.5	13.5	13.5	13.5	13.5	13.5	13.5	13.5	13.5
30				13.5	13.5	13.5	13.5	13.5	13.5	13.5	13.5
32					13.5	13.5	13.5	13.5	13.5	13.5	13.5
34					13.5	13.5	13.5	13.5	13.5	13.5	13.5
36						13.5	13.5	13.5	13.5	13.5	13.5
38							13.5	13.5	13.5	13.5	13.5
40								12.7	13.5	13.5	13.5
42									13.5	13.5	13.5
44									12.6	12.4	12.2
46										11.3	11.1
48											10
倍率 Parts of line	1	1	1	1	1	1	1	1	1	1	1

注释:

1.主臂长度超过74m的“*”处组合需使用腰绳,主臂长度超过77m推荐使用斜楔辅助起臂。

Note:

1.For areas with “*”, when boom length exceeds 74m, center hitch needs to be used; when boom length exceeds 77m, wedge needs to be used to assist boom raising.

1.3主臂工况_带主臂主钩(HBS/2)的臂端滑轮副钩特性

1.3 Boom working condition_boom single top aux. hook (with boom main hook, HBS/2)

主臂工况_带主臂主钩HBS/2_75t+30t的臂端滑轮副钩性能 (续前)

Boom working condition _boom single top aux. hook lifting capacity table (with boom main hook, HBS/2_75t+30t)

作业半径 (m) Working radius (m)	主臂长度 (m) Boom length (m)									
	56	59	62	65	68	71	74	77*	80*	83*
11	13.5	13.5								
12	13.5	13.5	13.5	13.5	13.5					
13	13.5	13.5	13.5	13.5	13.5	13.5	13.5			
14	13.5	13.5	13.5	13.5	13.5	13.5	13.5	13.5	13.5	13.5
15	13.5	13.5	13.5	13.5	13.5	13.5	13.5	13.5	13.5	13.5
16	13.5	13.5	13.5	13.5	13.5	13.5	13.5	13.5	13.5	13.5
17	13.5	13.5	13.5	13.5	13.5	13.5	13.5	13.5	13.5	13.5
18	13.5	13.5	13.5	13.5	13.5	13.5	13.5	13.5	13.5	13.5
19	13.5	13.5	13.5	13.5	13.5	13.5	13.5	13.5	13.5	13.5
20	13.5	13.5	13.5	13.5	13.5	13.5	13.5	13.5	13.5	13.5
22	13.5	13.5	13.5	13.5	13.5	13.5	13.5	13.5	13.5	13.5
24	13.5	13.5	13.5	13.5	13.5	13.5	13.5	13.5	13.5	13.5
26	13.5	13.5	13.5	13.5	13.5	13.5	13.5	13.5	13.5	13.5
28	13.5	13.5	13.5	13.5	13.5	13.5	13.5	13.5	13.5	13.5
30	13.5	13.5	13.5	13.5	13.5	13.5	13.5	13.5	13.5	13.5
32	13.5	13.5	13.5	13.5	13.5	13.5	13.5	13.5	13.5	13.5
34	13.5	13.5	13.5	13.5	13.5	13.5	13.5	13.5	13.5	13.5
36	13.5	13.5	13.5	13.5	13.5	13.5	13.5	13.5	13.5	13.5
38	13.5	13.5	13.5	13.5	13.5	13.5	13.5	13.5	13.5	13.5
40	13.5	13.5	13.5	13.5	13.5	13.5	13.5	13.5	13.5	13.5
42	13.5	13.5	13.5	13.5	13.5	13.5	13.5	13.5	13.5	13.5
44	12.4	12.2	12	11.7	11.5	11.3	11.1	11	10.8	10.6
46	11.3	11	10.8	10.6	10.3	10.2	9.9	9.9	9.6	9.5
48	10.2	10	9.8	9.5	9.3	9.2	8.9	8.9	8.6	8.4
50	9.3	9	8.8	8.6	8.3	8.2	8	7.9	7.7	7.5
52	8.4	8.2	8	7.7	7.5	7.3	7.1	7	6.8	6.6
54		7.3	7.2	6.9	6.7	6.5	6.3	6.2	6	5.8
56			6.4	6.2	5.9	5.8	5.5	5.5	5.2	5.1
58				5.5	5.2	5.1	4.8	4.8	4.5	4.4
60					4.6	4.4	4.2	4.2	3.9	3.7
62						3.9	3.8	3.6	3.6	3.1
64							3.3	3	2.7	2.6
66								2.5	2.5	2.2
68									2	2
倍率 Parts of line	1	1	1	1	1	1	1	1	1	1

注释:

1.主臂长度超过74m的“*”处组合需使用腰绳,主臂长度超过77m推荐使用斜楔辅助起臂。

Note:

1.For areas with “*”, when boom length exceeds 74m, center hitch needs to be used; when boom length exceeds 77m, wedge needs to be used to assist boom raising.

典型工况 Typical Working Conditions

1.3主臂工况_带主臂主钩(HBS/2)的臂端滑轮副钩特性

1.3 Boom working condition_boom single top aux. hook (with boom main hook, HBS/2)

主臂工况_带主臂主钩HBS/2_65t+30t的臂端滑轮副钩性能

Boom working condition _boom single top aux. hook lifting capacity table (with boom main hook, HBS/2_65t+30t)

作业半径 (m) Working radius (m)	主臂长度 (m) Boom length (m)										
	23	26	29	32	35	38	41	44	47	50	53
7	13.5	13.5									
8	13.5	13.5	13.5	13.5	13.5						
9	13.5	13.5	13.5	13.5	13.5	13.5	13.5				
10	13.5	13.5	13.5	13.5	13.5	13.5	13.5	13.5	13.5	13.5	13.5
11	13.5	13.5	13.5	13.5	13.5	13.5	13.5	13.5	13.5	13.5	13.5
12	13.5	13.5	13.5	13.5	13.5	13.5	13.5	13.5	13.5	13.5	13.5
13	13.5	13.5	13.5	13.5	13.5	13.5	13.5	13.5	13.5	13.5	13.5
14	13.5	13.5	13.5	13.5	13.5	13.5	13.5	13.5	13.5	13.5	13.5
15	13.5	13.5	13.5	13.5	13.5	13.5	13.5	13.5	13.5	13.5	13.5
16	13.5	13.5	13.5	13.5	13.5	13.5	13.5	13.5	13.5	13.5	13.5
17	13.5	13.5	13.5	13.5	13.5	13.5	13.5	13.5	13.5	13.5	13.5
18	13.5	13.5	13.5	13.5	13.5	13.5	13.5	13.5	13.5	13.5	13.5
19	13.5	13.5	13.5	13.5	13.5	13.5	13.5	13.5	13.5	13.5	13.5
20	13.5	13.5	13.5	13.5	13.5	13.5	13.5	13.5	13.5	13.5	13.5
22	13.5	13.5	13.5	13.5	13.5	13.5	13.5	13.5	13.5	13.5	13.5
24		13.5	13.5	13.5	13.5	13.5	13.5	13.5	13.5	13.5	13.5
26		13.5	13.5	13.5	13.5	13.5	13.5	13.5	13.5	13.5	13.5
28			13.5	13.5	13.5	13.5	13.5	13.5	13.5	13.5	13.5
30				13.5	13.5	13.5	13.5	13.5	13.5	13.5	13.5
32					13.5	13.5	13.5	13.5	13.5	13.5	13.5
34					13.5	13.5	13.5	13.5	13.5	13.5	13.5
36						13.5	13.5	13.5	13.5	13.5	13.5
38							13.5	13.5	13.5	13.5	13.5
40								13.5	13.2	13.1	12.9
42									12	11.8	11.6
44									10.8	10.6	10.4
46										8	9.6
48											8.4
倍率 Parts of line	1	1	1	1	1	1	1	1	1	1	1

注释:

1.主臂长度超过74m的“*”处组合需使用腰绳,主臂长度超过77m推荐使用斜楔辅助起臂。

Note:

1.For areas with “*”, when boom length exceeds 74m, center hitch needs to be used; when boom length exceeds 77m, wedge needs to be used to assist boom raising.

1.3主臂工况_带主臂主钩(HBS/2)的臂端滑轮副钩特性

1.3 Boom working condition_boom single top aux. hook (with boom main hook, HBS/2)

主臂工况_带主臂主钩HBS/2_65t+30t的臂端滑轮副钩性能 (续前)

Boom working condition _boom single top aux. hook lifting capacity table (with boom main hook, HBS/2_65t+30t)

作业半径 (m) Working radius (m)	主臂长度 (m) Boom length (m)									
	56	59	62	65	68	71	74	77*	80*	
11	13.5	13.5								
12	13.5	13.5	13.5	13.5	13.5					
13	13.5	13.5	13.5	13.5	13.5	13.5	13.5			
14	13.5	13.5	13.5	13.5	13.5	13.5	13.5	13.5	13.5	13.5
15	13.5	13.5	13.5	13.5	13.5	13.5	13.5	13.5	13.5	13.5
16	13.5	13.5	13.5	13.5	13.5	13.5	13.5	13.5	13.5	13.5
17	13.5	13.5	13.5	13.5	13.5	13.5	13.5	13.5	13.5	13.5
18	13.5	13.5	13.5	13.5	13.5	13.5	13.5	13.5	13.5	13.5
19	13.5	13.5	13.5	13.5	13.5	13.5	13.5	13.5	13.5	13.5
20	13.5	13.5	13.5	13.5	13.5	13.5	13.5	13.5	13.5	13.5
22	13.5	13.5	13.5	13.5	13.5	13.5	13.5	13.5	13.5	13.5
24	13.5	13.5	13.5	13.5	13.5	13.5	13.5	13.5	13.5	13.5
26	13.5	13.5	13.5	13.5	13.5	13.5	13.5	13.5	13.5	13.5
28	13.5	13.5	13.5	13.5	13.5	13.5	13.5	13.5	13.5	13.5
30	13.5	13.5	13.5	13.5	13.5	13.5	13.5	13.5	13.5	13.5
32	13.5	13.5	13.5	13.5	13.5	13.5	13.5	13.5	13.5	13.5
34	13.5	13.5	13.5	13.5	13.5	13.5	13.5	13.5	13.5	13.5
36	13.5	13.5	13.5	13.5	13.5	13.5	13.5	13.5	13.5	13.5
38	13.5	13.5	13.5	13.5	13.5	13.5	13.2	13.1	12.9	
40	13	12.8	12.6	12.4	12.1	12	11.7	11.7	11.4	
42	11.8	11.5	11.3	11.1	10.8	10.7	10.4	10.4	10.1	
44	10.6	10.4	10.2	9.9	9.7	9.5	9.3	9.2	9	
46	9.6	9.3	9.1	8.9	8.6	8.5	8.2	8.2	7.9	
48	8.6	8.4	8.2	7.9	7.7	7.5	7.3	7.2	7	
50	7.7	7.5	7.3	7	6.8	6.7	6.4	6.4	6.1	
52	6.9	6.7	6.5	6.2	6	5.8	5.6	5.5	5.3	
54		5.9	5.7	5.5	5.2	5.1	4.8	4.8	4.5	
56			5	4.8	4.5	4.4	4.2	4.1	3.9	
58				4.1	3.9	3.8	3.5	3.5	3.2	
60					3.5	3.3	3.2	2.9	2.6	
62						2.7	2.6	2.3	2.1	
64							2.1	1.8	1.8	
倍率 Parts of line	1	1	1	1	1	1	1	1	1	1

注释:

1.主臂长度超过74m的“*”处组合需使用腰绳,主臂长度超过77m推荐使用斜楔辅助起臂。

Note:

1.For areas with “*”, when boom length exceeds 74m, center hitch needs to be used; when boom length exceeds 77m, wedge needs to be used to assist boom raising.

典型工况 Typical Working Conditions

塔式副臂工况/Tower jib working condition

2.1 塔式副臂工况主臂臂节组合

2.1 Combinations of main boom sections under tower jib working condition

名称及数量 Name&Number	主臂底节 Boom Butt	中间节 Insert section	中间节 Insert section	中间节 Insert section	主臂过渡节 Boom transition section	中间节 Insert section	中间节 Insert section	中间节 Insert section	主臂顶节 Boom top
主臂长度 Main boom length	9m	3mA	6mA	12mA	6m	3mB	6mB	12mB	5m
HB23	1	1	0	0	1	0	0	0	1
HB26	1	0	1	0	1	0	0	0	1
HB29	1	1	1	0	1	0	0	0	1
HB32	1	0	0	1	1	0	0	0	1
HB35	1	1	0	1	1	0	0	0	1
HB38	1	0	1	1	1	0	0	0	1
HB41	1	1	1	1	1	0	0	0	1
HB44	1	0	0	2	1	0	0	0	1
HB47	1	1	0	2	1	0	0	0	1
HB50	1	0	1	2	1	0	0	0	1
HB53	1	1	1	2	1	0	0	0	1
HB56	1	0	0	2	1	0	0	1	1

2.2 塔式副臂工况副臂臂节组合

2.2 Combinations of jib sections under tower jib working condition

名称及数量 Name&Number	塔臂底节 Tower jib butt	中间节 Insert section	中间节 Insert section	中间节 Insert section	主臂过渡节 Tower jib transition section	中间节 Insert section	中间节 Insert section	中间节 Insert section	塔臂顶节 Tower jib top section
副臂长度 Jib length	1.5m	3mB	6mB	12mB	6m	3mC	6mC	12mC	3m
W18	1	1	1	0	1	0	0	0	1
W21	1	1	1	0	1	1	0	0	1
W24	1	1	1	0	1	0	1	0	1
W27	1	1	0	1	1	1	0	0	1
W30	1	1	1	1	1	0	0	0	1
W33	1	1	1	1	1	1	0	0	1
W36	1	1	1	1	1	0	1	0	1
W39	1	1	1	1	1	1	1	0	1
W42	1	1	1	1	1	0	0	1	1
W45	1	1	1	1	1	1	0	1	1
W48	1	1	1	1	1	0	1	1	1
*W51	1	1	1	1	1	1	1	1	1
*W54	1	1	1	1	1	0	0	2	1
*W57	1	1	1	1	1	1	0	2	1
*W60	1	1	1	1	1	0	1	2	1
*W63	1	1	1	1	1	1	1	2	1

注:

1. “*” 塔臂长度需要使用腰绳。
2. 主臂各臂节需安装塔臂后拉板,主臂顶节须安装塔臂用导向滑轮。
3. 主臂+塔臂组合长度超过71m推荐使用斜楔辅助起臂。

Note:

1. “*” means tower jib length that need to use center hitch.
2. Tower jib rear pendants must be installed for boom sections; tower jib guide pulley must be installed for boom top section.
3. When the combination length of the main boom and tower jib exceeds 71m, a wedge block is recommended to be used to raise the boom (jib).

典型工况 Typical Working Conditions

2.3塔式副臂工况(HW)起臂表 (配重组合85t+30t)

2.3 Boom raising table of tower jib working condition (HW) (counterweight combination 85t+30t)

主臂 Main boom	HB23	HB26	HB29	HB32	HB35	HB38	HB41	HB44	HB47	HB50	HB53	HB56
塔臂 Tower jib												
W18	●	●	●	●	●	●	●	●	●	●	●	●
W21	●	●	●	●	●	●	●	●	●	●	●	●
W24	●	●	●	●	●	●	●	●	●	●	●	●
W27	●	●	●	●	●	●	●	●	●	●	●	●
W30	●	●	●	●	●	●	●	●	●	●	●	●
W33	●	●	●	●	●	●	●	●	●	●	●	●
W36	●	●	●	●	●	●	●	●	●	●	●	●
W39	●	●	●	●	●	●	●	●	●	●	●	●
W42	●	●	●	●	●	●	●	●	●	●	●	●
W45	●	●	●	●	●	●	●	●	●	●	●	×
W48	●	●	●	●	●	●	●	●	●	●	●	×
*W51	●	●	●	●	●	●	●	●	●	●	●	×
*W54	●	●	●	●	●	●	●	●	●	●	●	×
*W57	●	●	●	●	●	●	●	●	●	●	●	×
*W60	●	●	●	●	●	●	●	●	●	●	●	×
*W63	●	●	●	●	●	●	●	●	●	●	×	×

注:

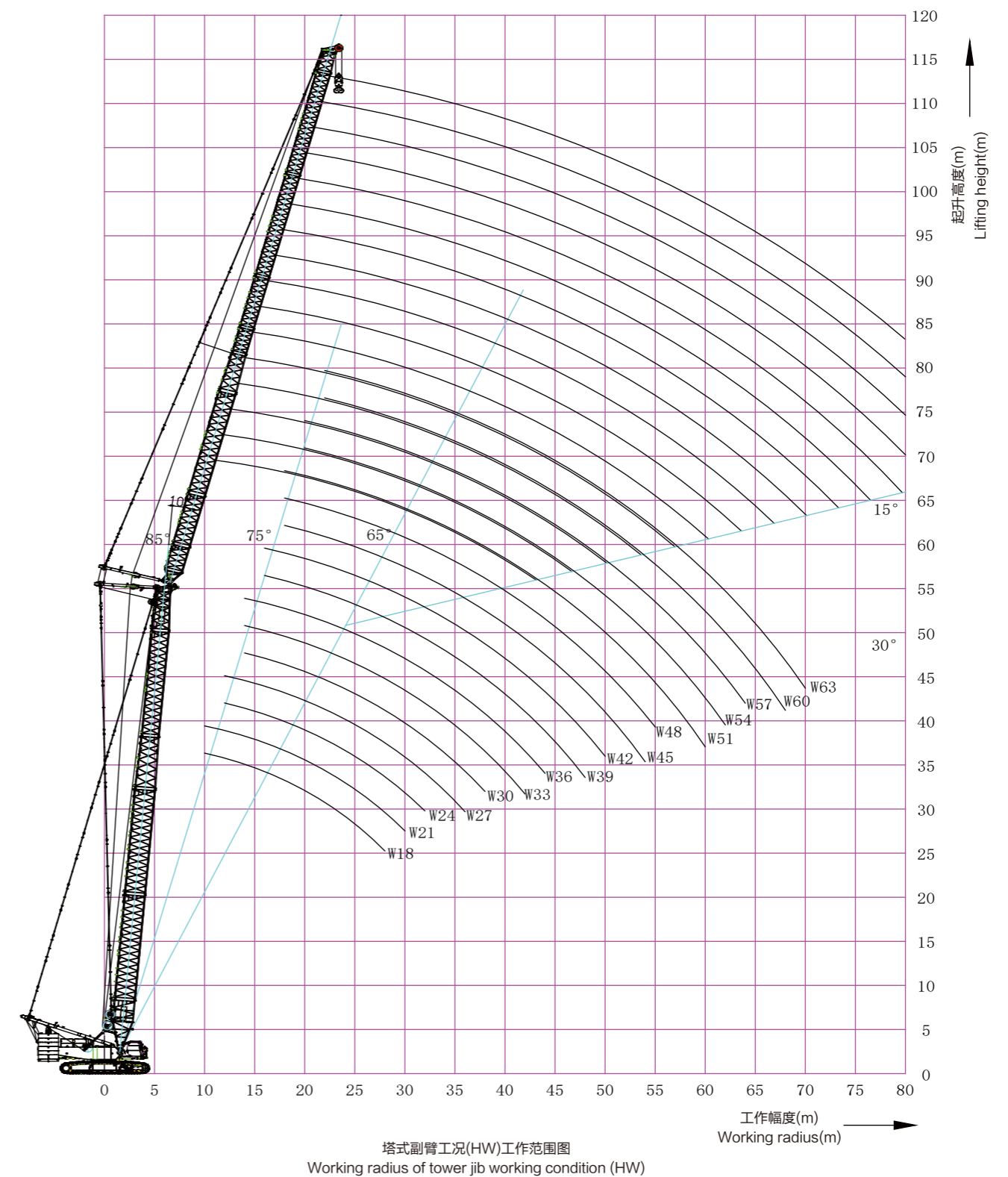
- 1.起臂时, 请将履带驱动轮置于车体后方。
- 2.“●”--可以起臂, “×”--不可起臂, 工况不可使用。
- 3.“*”--塔臂长度需要使用腰绳。
- 4.对于主臂与塔臂长度之和超过71m的臂架组合, 若条件允许, 推荐采用斜楔辅助起臂, 以确保起落臂架更安全。

Notes:

1. When raising boom, place the drive roller of crawler tracks at the rear of the crane body.
2. “●” — means boom raising is allowable, “×” — means boom raising is not allowable, this working condition cannot be used.
3. “*” means tower jib length that need to use center hitch.
4. For the combinations which the length of boom plus the length of jib exceeds 71m, if it is available, a wedge block is recommended to be used to ensure the safety of boom (jib) raising and lowering.

2.4塔式副臂工况(HW)作业范围图

2.4 Working radius of tower jib working condition (HW)



典型工况 Typical Working Conditions

2.5塔式副臂工况（HW）起重性能

2.5 Partial lifting performance of tower jib working condition (HW)

说明:

- 1.实际起重重量必须从本表的额定起重重量减去吊钩、吊具及缠绕在吊钩及臂头上钢丝绳的重量。
- 2.表中额定载荷是在水平坚硬地面、坡度不超过1%、重物被缓慢平稳吊起、非行走吊重工作时的值。
- 3.载荷值是在重物自由悬挂状态下，未考虑风载对吊重的影响、地面状况、地面坡度、操作速度以及其它任何对设备安全操作有负面影响的因素。因此，操作手有责任判断当前情况，相应地降低载荷并减慢速度。
- 4.塔式副臂长度超过48m需使用腰绳，主臂+塔臂组合长度超过71m推荐使用斜楔辅助起臂。
- 5.塔式副臂顶节不带塔臂臂端滑轮。

Notes:

- 1.The actual lifting weight is the remained weight after the weights of hook, slings and wire ropes reeved on hook and boom (jib) head are subtracted from the rated lifting load in table.
- 2.The rated loads in the table are the lifted values when the loads are lifted slowly and stably in non-travelling state on plane and solid ground with the gradient no more than 1%.
- 3.The load values given in the table are the load hanging freely without consideration of the influence of wind load to the lifted load, the ground condition, gradient, operation speed and nay other factors negatively impact on the safe operation of the crane. Thus, the operator is responsible for the current situation judgment, reducing the lifted load correspondingly and reducing the speed.
- 4.When tower jib length exceeds 48m, a center hitch must be used; When the combination length of the main boom and jib exceeds 71m, a wedge block is recommended to be used to raise the boom (jib).
- 5.No tower top single top working condition.

A、主臂工作角度85°

A、Main boom working angle is 85°

A、主臂工作角度85°

A、Main boom working angle is 85°

幅度/m Radius/m	主臂23m, 主臂工作角度85°, 塔式副臂长度/m Boom Length23m, Boom Angle85°, Tower Jib Length/m															幅度/m Radius/m	
	18	21	24	27	30	33	36	39	42	45	48	51	54	57	60		63
10	100																10
11	98.5	100															11
12	96.9	96.7	96.5														12
13	88.6	88.4	88.2	87.9													13
14	81.6	81.3	81.2	80.9	80.6												14
15	75.3	75.1	75.2	74.8	74.6	74.3											15
16	69.1	69	69	68.6	68.4	68.1	68.3	68.1									16
17	63.9	63.7	63.7	63.3	63.1	62.8	62.9	62.7	62.9								17
18	59.4	59.1	59.2	58.7	58.6	58.2	58.3	58	58.1	58							18
19	55.4	55.2	55.2	54.8	54.6	54.3	54.3	54	54.1	53.9	52.7						19
20	51.8	51.6	51.7	51.3	51.1	50.8	50.8	50.5	50.5	50.2	50.3	48					20
22		45.8	45.8	45.4	45.3	44.9	44.9	44.6	44.6	44.3	44.2	43.9	40.4	36.5			22
24		40.9	41	40.7	40.5	40.2	40.1	39.8	39.8	39.5	39.4	39	39	35.1	30.4	28.2	24
26			37.1	36.7	36.6	36.3	36.2	35.9	35.9	35.5	35.5	35.1	35	33.4	28.9	26.7	26
28				33.5	33.3	33	33	32.6	32.6	32.3	32.2	31.8	31.7	31.4	27.5	25.4	28
30				30.6	30.5	30.2	30.2	29.8	29.8	29.5	29.4	29	28.9	28.6	26.3	24.2	30
32					28.1	27.8	27.8	27.4	27.4	27.1	27	26.6	26.5	26.2	25.1	23.1	32
34						25.7	25.7	25.3	25.3	25	24.9	24.5	24.4	24.1	23.9	22.1	34
36						23.8	23.8	23.5	23.5	23.2	23	22.7	22.6	22.3	22.1	21.2	36
38							22.2	21.9	21.9	21.5	21.4	21	21	20.6	20.5	20.1	38
40								20.4	20.4	20.1	20	19.6	19.5	19.2	19	18.7	40
42									19.1	18.8	18.7	18.3	18.2	17.9	17.7	17.4	42
44									17.9	17.6	17.5	17.1	17	16.7	16.6	16.2	44
46										16.5	16.4	16.1	16	15.7	15.5	15.2	46
48											15.4	15.1	15	14.7	14.6	14.2	48
50											14.5	14.2	14.1	13.8	13.7	13.3	50
52												13.4	13.3	13	12.8	12.5	52
54													12.5	12.2	12.1	11.8	54
56													11.8	11.5	11.4	11.1	56
58														10.9	10.7	10.4	58
60															10.1	9.8	60
62															9.5	9.2	62
64																8.7	64
配重 Countweight	85+30	85+30	85+30	85+30	85+30	85+30	85+30	85+30	85+30	85+30	85+30	85+30	85+30	85+30	85+30	85+30	配重 Countweight
倍率 Parts of line	10	10	10	8	7	6	6	6	5	5	5	5	4	3	3	3	倍率 Parts of line

典型工况 Typical Working Conditions

A、主臂工作角度85°
A、Main boom working angle is 85°

幅度/m Radius/m	主臂26m, 主臂角度85°, 塔式副臂长度/m Boom Length26m, Boom Angle85°, Tower Jib Length/m																幅度/m Radius/m
	18	21	24	27	30	33	36	39	42	45	48	51	54	57	60	63	
11	98.2																11
12	96.6	96.4	96.3														12
13	88.4	88.1	88	87.7													13
14	80.8	80.6	80.8	80.3	80.3												14
15	73.5	73.3	73.4	73	72.8	72.6											15
16	67.4	67.2	67.2	66.8	66.6	66.4	66.5										16
17	62.1	61.9	62	61.5	61.4	61.1	61.1	60.9									17
18	57.6	57.4	57.4	57	56.8	56.5	56.6	56.3	56.4	56.3							18
19	53.7	53.4	53.5	53.1	52.9	52.6	52.6	52.3	52.4	52.2	51.9						19
20	50.2	50	50.1	49.6	49.5	49.1	49.1	48.8	48.9	48.6	48.7	47.3					20
22		44.2	44.2	43.9	43.7	43.4	43.3	43	43	42.7	42.7	42.3	40	36.2			22
24		39.4	39.5	39.2	39.1	38.7	38.7	38.4	38.3	38	37.9	37.6	37.5	34.9	30.5	28.2	24
26			35.7	35.4	35.2	34.9	34.9	34.5	34.5	34.2	34.1	33.7	33.6	33.3	28.9	26.7	26
28				32.1	32	31.7	31.7	31.3	31.3	31	30.9	30.5	30.4	30.1	27.6	25.4	28
30				29.3	29.3	29	29	28.6	28.6	28.3	28.1	27.8	27.7	27.3	26.3	24.2	30
32					26.9	26.6	26.6	26.3	26.2	25.9	25.8	25.4	25.3	25	24.8	23.1	32
34						24.5	24.6	24.2	24.2	23.9	23.8	23.4	23.3	23	22.8	22.1	34
36						22.7	22.7	22.4	22.4	22.1	22	21.6	21.5	21.2	21	20.7	36
38							21.1	20.8	20.8	20.5	20.4	20	20	19.6	19.5	19.1	38
40								19.4	19.4	19.1	19	18.6	18.6	18.2	18.1	17.7	40
42									18.1	18.1	17.8	17.7	17.4	17.3	17	16.8	42
44										17	16.7	16.6	16.2	16.2	15.8	15.7	44
46											15.6	15.6	15.2	15.1	14.8	14.7	46
48												14.6	14.2	14.2	13.9	13.7	48
50													13.7	13.4	13.3	13	50
52														12.6	12.5	12.2	52
54															11.8	11.5	54
56																11.8	56
配重 Countweight	85+30	85+30	85+30	85+30	85+30	85+30	85+30	85+30	85+30	85+30	85+30	85+30	85+30	85+30	85+30	85+30	配重 Countweight
倍率 Parts of line	10	10	10	8	7	6	6	5	5	5	5	4	4	3	3	3	倍率 Parts of line

A、主臂工作角度85°
A、Main boom working angle is 85°

幅度/m Radius/m	主臂29m, 主臂工作角度85°, 塔式副臂长度/m Boom Length29m, Boom Angle85°, Tower Jib Length/m																幅度/m Radius/m
	18	21	24	27	30	33	36	39	42	45	48	51	54	57	60	63	
11	97.9																11
12	96.3	96.1															12
13	88.1	87.9	87.7														13
14	80	79.8	80	79.6	79.5												14
15	72.6	72.4	72.5	72.1	71.9	71.8											15
16	66.4	66.2	66.2	65.8	65.7	65.4	65.5										16
17	61.1	61	61	60.6	60.4	60.1	60.2	60									17
18	56.6	56.4	56.5	56	55.9	55.6	55.6	55.3	55.4								18
19	52.7	52.5	52.5	52.1	51.9	51.6	51.6	51.3	51.4	51.2							19
20	49.2	49	49.1	48.7	48.5	48.2	48.2	47.8	47.9	47.6	47.7	46.4					20
22	43.2	43.2	43.3	42.9	42.8	42.4	42.4	42.1	42.1	41.8	41.7	41.4	39.5	35.8			22
24		38.5	38.6	38.3	38.2	37.8	37.8	37.4	37.4	37.1	37	36.7	36.6	34.6	30.5	28.2	24
26			34.8	34.5	34.4	34	34	33.6	33.6	33.3	33.2	32.8	32.8	32.4	29	26.8	26
28				31.3	31.2	30.9	30.8	30.5	30.5	30.1	30	29.6	29.6	29.2	27.6	25.4	28
30					28.5	28.5	28.2	28.2	27.8	27.8	27.5	27.3	27	26.9	26.5	26.3	30
32						26.1	25.9	25.8	25.5	25.5	25.1	25	24.7	24.6	24.2	24.1	32
34							23.8	23.8	23.5	23.5	23.2	23	22.7	22.6	22.2	22.1	34
36								22	22.1	21.7	21.7	21.4	21.3	20.9	20.8	20.3	36
38									20.5	20.2	20.2	19.8	19.7	19.4	19.3	19	38
40											18.8	18.8	18.5	18.4	18	17.9	40
42												17.5	17.5	17.2	17.1	16.7	42
44													16.4	16.1	16	15.6	44
46														15	15	14.6	46
48															14.1	14	48
50																13.2	50
52																	52
54																12	54
配重 Countweight	85+30	85+30	85+30	85+30	85+30	85+30	85+30	85+30	85+30	85+30	85+30	85+30	85+30	85+30	85+30	85+30	配重 Countweight
倍率 Parts of line	10	10	8	7	7	6	6	5	5	5	4	4	4	4	3	3	倍率 Parts of line

典型工况 Typical Working Conditions

A、主臂工作角度85°
A、Main boom working angle is 85°

幅度/m Radius/m	主臂32m, 主臂角度85°, 塔式副臂长度/m Boom Length32m, Boom Angle85°, Tower Jib Length/m																幅度/m Radius/m
	18	21	24	27	30	33	36	39	42	45	48	51	54	57	60	63	
11	97.7																11
12	96.1	95.8															12
13	87.9	87.6	87.5														13
14	80.3	80.2	80.3	79.9													14
15	72.7	72.5	72.6	72.2	72.1												15
16	66.4	66.2	66.2	65.8	65.6	65.4	65.5										16
17	61	60.8	60.9	60.4	60.3	60	60	59.8									17
18	56.4	56.2	56.2	55.8	55.7	55.3	55.4	55.1	55.2								18
19	52.4	52.3	52.3	51.9	51.7	51.4	51.3	51	51.1	50.9							19
20	48.9	48.8	48.8	48.4	48.2	47.9	47.8	47.5	47.6	47.3	47.4						20
22	42.9	42.9	43	42.6	42.4	42.1	42	41.7	41.7	41.4	41.4	41	38.9	35.3			22
24		38.2	38.3	37.9	37.8	37.4	37.4	37.1	37	36.7	36.6	36.3	36.2	34.2	30.4	28	24
26			34.4	34.1	34	33.7	33.6	33.3	33.3	32.9	32.8	32.4	32.3	32	29	26.8	26
28			31.1	30.9	30.8	30.5	30.5	30.1	30.1	29.7	29.6	29.2	29.2	28.8	27.6	25.5	28
30				28.2	28.1	27.8	27.8	27.4	27.4	27.1	27	26.6	26.5	26.1	26	24.3	30
32					25.8	25.5	25.5	25.1	25.1	24.8	24.7	24.3	24.2	23.8	23.7	23.2	32
34					23.7	23.5	23.5	23.1	23.1	22.8	22.7	22.3	22.2	21.9	21.7	21.3	34
36						21.6	21.7	21.4	21.4	21	20.9	20.6	20.5	20.1	20	19.6	36
38							20.1	19.8	19.8	19.5	19.4	19	18.9	18.6	18.4	18.1	38
40								18.4	18.4	18.1	18	17.6	17.6	17.2	17.1	16.7	40
42									17.1	17.2	16.9	16.8	16.4	16.3	16	15.9	42
44										16	15.8	15.7	15.3	15.2	14.9	14.8	44
46											14.7	14.7	14.3	14.2	13.9	13.8	46
48											13.8	13.7	13.4	13.3	13	12.9	48
50												12.9	12.5	12.5	12.2	12	50
52													11.7	11.7	11.4	11.3	52
54														11	11	10.7	54
配重 Countweight	85+30	85+30	85+30	85+30	85+30	85+30	85+30	85+30	85+30	85+30	85+30	85+30	85+30	85+30	85+30	85+30	配重 Countweight
倍率 Parts of line	10	10	8	7	6	6	6	5	5	5	4	4	4	3	3	3	倍率 Parts of line

A、主臂工作角度85°
A、Main boom working angle is 85°

幅度/m Radius/m	主臂35m, 主臂工作角度85°, 塔式副臂长度/m Boom Length35m, Boom Angle85°, Tower Jib Length/m																幅度/m Radius/m
	18	21	24	27	30	33	36	39	42	45	48	51	54	57	60	63	
12	95.8	95.5															12
13	87.6	87.3	87.1														13
14	80.6	80.4	80.2	79.9													14
15	73	72.8	72.8	72.4	72.3												15
16	66.4	66.2	66.3	65.9	65.7	65.5											16
17	61	60.8	60.8	60.4	60.2	59.9	60										17
18	56.3	56.1	56.1	55.7	55.5	55.2	55.2	55	55.1								18
19	52.2	52.1	52.1	51.7	51.5	51.2	51.1	50.8	50.9	50.7							19
20	48.7	48.5	48.6	48.2	48	47.6	47.6	47.3	47.3	47.1	46.5						20
22	42.7	42.6	42.7	42.3	42.2	41.8	41.8	41.4	41.4	41.1	41	40.7	38.3				22
24		37.9	38	37.6	37.5	37.1	37.1	36.7	36.7	36.4	36.3	35.9	35.9	33.7	30.1	27.6	24
26			34.1	33.8	33.7	33.3	33.3	32.9	32.9	32.6	32.5	32.1	32	31.7	29	26.7	26
28			30.8	30.6	30.5	30.2	30.1	29.8	29.8	29.4	29.3	28.9	28.8	28.5	27.6	25.5	28
30				27.8	27.8	27.5	27.5	27.1	27.1	26.7	26.6	26.2	26.1	25.8	25.6	24.3	30
32					25.4	25.2	25.2	24.8	24.8	24.4	24.3	23.9	23.9	23.5	23.3	23	32
34					23.4	23.1	23.1	22.8	22.8	22.5	22.3	22	21.9	21.5	21.4	21	34
36						21.3	21.4	21.1	21.1	20.7	20.6	20.2	20.1	19.8	19.6	19.3	36
38							19.8	19.5	19.5	19.2	19.1	18.7	18.6	18.3	18.1	17.8	38
40								18.4	18.1	18.1	17.8	17.7	17.3	17.3	16.9	16.8	40
42									16.9	16.9	16.6	16.5	16.1	16	15.7	15.6	42
44										15.8	15.5	15.4	15	14.9	14.6	14.5	44
46											14.5	14.4	14	14	13.6	13.5	46
48												13.5	13.5	13.1	13	12.7	48
50													12.6	12.3	12.2	11.9	50
52														11.5	11.5	11.1	52
54															10.8	10.7	54
56																10.1	56
配重 Countweight	85+30	85+30	85+30	85+30	85+30	85+30	85+30	85+30	85+30	85+30	85+30	85+30	85+30	85+30	85+30	85+30	配重 Countweight
倍率 Parts of line	10	9	8	7	6	6	5	5	5	4	4	4	3	3	3	3	倍率 Parts of line

典型工况 Typical Working Conditions

A、主臂工作角度85°
A、Main boom working angle is 85°

幅度/m Radius/m	主臂38m, 主臂角度85°, 塔式副臂长度/m Boom Length38m, Boom Angle85°, Tower Jib Length/m																幅度/m Radius/m
	18	21	24	27	30	33	36	39	42	45	48	51	54	57	60	63	
12	95.5																12
13	87.3	87															13
14	80.4	80.1	80	78.5													14
15	73.7	73.5	73.6	73.1	72.1												15
16	67	66.8	66.8	66.4	66.2	66											16
17	61.4	61.2	61.2	60.8	60.6	60.3	60.3										17
18	56.6	56.4	56.4	56	55.8	55.5	55.5	55.2									18
19	52.5	52.3	52.3	51.9	51.7	51.3	51.3	51	51.1								19
20	48.8	48.7	48.7	48.3	48.1	47.7	47.7	47.4	47.4	47.2	44.3						20
22	42.7	42.7	42.7	42.3	42.2	41.8	41.8	41.4	41.4	41.1	41	39.9	37.3				22
24		37.9	38	37.6	37.5	37.1	37.1	36.7	36.7	36.3	36.2	35.8	35.7	33.2	29.7		24
26			34.1	33.7	33.6	33.3	33.2	32.9	32.8	32.5	32.4	32	31.9	31.6	28.7	26.4	26
28			30.7	30.5	30.4	30.1	30	29.7	29.6	29.3	29.2	28.8	28.7	28.3	27.6	25.5	28
30				27.7	27.7	27.4	27.3	27	27	26.6	26.5	26.1	26	25.6	25.5	24.3	30
32					25.3	25	25	24.7	24.7	24.3	24.2	23.8	23.7	23.3	23.2	22.8	32
34					23.2	23	23	22.7	22.7	22.3	22.2	21.8	21.7	21.4	21.2	20.8	34
36						21.2	21.2	20.9	20.9	20.6	20.5	20.1	20	19.6	19.5	19.1	36
38							19.7	19.4	19.4	19	18.9	18.5	18.5	18.1	18	17.6	38
40							18.2	18	18	17.7	17.6	17.2	17.1	16.8	16.6	16.3	40
42								16.7	16.8	16.4	16.3	16	15.9	15.5	15.4	15.1	42
44									15.6	15.3	15.2	14.9	14.8	14.5	14.3	14	44
46									14.6	14.3	14.2	13.9	13.8	13.5	13.3	13	46
48										13.4	13.3	13	12.9	12.6	12.4	12.1	48
50											12.5	12.1	12.1	11.7	11.6	11.3	50
52												11.4	11.3	11	10.9	10.5	52
54												10.6	10.6	10.3	10.2	9.8	54
56													9.9	9.6	9.5	9.2	56
配重 Countweight	85+30	85+30	85+30	85+30	85+30	85+30	85+30	85+30	85+30	85+30	85+30	85+30	85+30	85+30	85+30	85+30	配重 Countweight
倍率 Parts of line	10	9	8	7	6	6	5	5	5	4	4	4	3	3	3	3	倍率 Parts of line

A、主臂工作角度85°
A、Main boom working angle is 85°

幅度/m Radius/m	主臂41m, 主臂工作角度85°, 塔式副臂长度/m Boom Length41m, Boom Angle85°, Tower Jib Length/m																幅度/m Radius/m			
	18	21	24	27	30	33	36	39	42	45	48	51	54	57	60	63				
12	94.4																12			
13	86.9	85.7															13			
14	80	79.8	78.4														14			
15	74.1	73.9	73.5	72													15			
16	67.7	67.5	67.5	67	66.5	65.2											16			
17	61.9	61.7	61.7	61.2	61.1	60.8	60.3										17			
18	57	56.8	56.8	56.3	56.1	55.8	55.8	54.5									18			
19	52.8	52.5	52.6	52.1	51.9	51.6	51.5	51.3	49.6								19			
20	49.1	48.9	48.9	48.5	48.3	47.9	47.9	47.5	47.6	44.9							20			
22	42.9	42.8	42.8	42.4	42.2	41.9	41.8	41.5	41.4	41.1	39.9	37.7	35.3				22			
24		37.9	38	37.6	37.5	37.1	37	36.7	36.6	36.3	36.2	35.8	33.8	31.6	29.2		24			
26			33.8	34	33.7	33.6	33.2	33.2	32.8	32.8	32.4	32.3	31.9	31.8	30.3	28.3	26.1	26		
28				30.7	30.4	30.3	30	30	29.6	29.6	29.2	29.1	28.7	28.6	28.2	27.3	25.2	28		
30					27.7	27.6	27.3	27.2	26.9	26.9	26.5	26.4	26	25.9	25.5	25.3	24.3	30		
32						25.2	24.9	24.9	24.6	24.5	24.2	24.1	23.7	23.6	23.2	23	22.7	32		
34							23.1	22.9	22.9	22.6	22.5	22.2	22.1	21.7	21.6	21.2	21.1	20.7	34	
36								21.1	21.1	20.8	20.8	20.5	20.3	19.9	19.9	19.5	19.3	19	36	
38									19.6	19.3	19.3	18.9	18.8	18.4	18.3	18	17.8	17.5	38	
40										18.1	17.9	17.9	17.5	17.4	17	17	16.6	16.5	40	
42											16.6	16.6	16.3	16.2	15.8	15.8	15.4	15.3	42	
44												15.5	15.2	15.1	14.7	14.7	14.3	14.2	44	
46													14.5	14.2	14.1	13.7	13.7	13.3	46	
48														13.3	13.2	12.8	12.8	12.4	48	
50															12.4	12	11.9	11.6	50	
52																11.6	11.2	11.2	52	
54																	10.5	10.5	54	
56																		9.8	56	
配重 Countweight	85+30	85+30	85+30	85+30	85+30	85+30	85+30	85+30	85+30	85+30	85+30	85+30	85+30	85+30	85+30	85+30	85+30	85+30	85+30	配重 Countweight
倍率 Parts of line	9	8	7	6	6	6	5	5	4	4	4	4	3	3	3	3	3	3	3	倍率 Parts of line

典型工况 Typical Working Conditions

A、主臂工作角度85°
A、Main boom working angle is 85°

幅度/m Radius/m	主臂44m, 主臂角度85°, 塔式副臂长度/m Boom Length44m, Boom Angle85°, Tower Jib Length/m																幅度/m Radius/m
	18	21	24	27	30	33	36	39	42	45	48	51	54	57	60	63	
12	92.2																12
13	85.5	83.8															13
14	79.8	78.2	76.8														14
15	73.9	73.3	72	70.6													15
16	68.8	68.5	67.8	66.4	65.2												16
17	62.8	62.5	62.5	62.1	61.6	60.5	56.9										17
18	57.7	57.5	57.4	57	56.8	56.5	55.1	51.5									18
19	53.3	53.1	53.1	52.7	52.5	52.1	50	46.9									19
20	49.5	49.3	49.4	48.9	48.7	48.3	48.3	48	45.7	42.7							20
22	43.2	43.1	43.2	42.7	42.5	42.2	42.1	41.7	41.7	40.4	38	35.9					22
24		38.1	38.2	37.9	37.7	37.3	37.2	36.9	36.8	36.5	36	34.2	32.3	30.2	28.3		24
26		34	34.2	33.9	33.7	33.4	33.3	32.9	32.9	32.5	32.4	32	30.7	28.9	27.3	25.5	26
28			30.8	30.6	30.5	30.1	30.1	29.7	29.6	29.3	29.1	28.7	28.6	27.6	26.1	24.5	28
30				27.8	27.7	27.3	27.3	27	26.9	26.5	26.4	26	25.9	25.5	24.9	23.5	30
32				25.3	25.3	25	25	24.6	24.6	24.2	24.1	23.7	23.6	23.2	23	22.4	32
34					23.2	22.9	22.9	22.6	22.6	22.2	22.1	21.7	21.6	21.2	21	20.7	34
36						21.1	21.1	20.8	20.8	20.4	20.3	19.9	19.8	19.5	19.3	18.9	36
38							19.6	19.3	19.2	18.9	18.8	18.4	18.3	17.9	17.8	17.4	38
40							18.1	17.8	17.9	17.5	17.4	17	16.9	16.6	16.4	16.1	40
42								16.6	16.6	16.3	16.2	15.8	15.7	15.4	15.2	14.9	42
44									15.5	15.2	15.1	14.7	14.6	14.3	14.1	13.8	44
46									14.4	14.2	14.1	13.7	13.6	13.3	13.1	12.8	46
48									13.2	13.2	12.8	12.7	12.4	12.2	11.9	11.9	48
50									12.3	12	11.9	11.6	11.4	11.1	11.1	11.1	50
52									11.5	11.2	11.1	10.8	10.7	10.3	10.3	10.3	52
54									10.5	10.4	10.1	10	10	9.7	9.7	9.7	54
56										9.8	9.5	9.3	9	9	9	9	56
配重 Countweight	85+30	85+30	85+30	85+30	85+30	85+30	85+30	85+30	85+30	85+30	85+30	85+30	85+30	85+30	85+30	85+30	配重 Countweight
倍率 Parts of line	8	7	7	6	6	5	5	5	4	4	3	3	3	3	3	2	倍率 Parts of line

A、主臂工作角度85°
A、Main boom working angle is 85°

幅度/m Radius/m	主臂47m, 主臂工作角度85°, 塔式副臂长度/m Boom Length47m, Boom Angle85°, Tower Jib Length/m																幅度/m Radius/m
	18	21	24	27	30	33	36	39	42	45	48	51	54	57	60	63	
13	83.7	82															13
14	78.1	76.6	75.2														14
15	73.2	71.8	70.6	69.1													15
16	68.5	67.6	66.5	65.2	62.8												16
17	63.5	63.3	62.8	61.6	60.4	56.8											17
18	58.3	58	58	57.6	57.3	54.8	51.7										18
19	53.8	53.6	53.6	53.1	52.9	52.6	50	47	44.2								19
20	49.9	49.7	49.7	49.3	49.1	48.7	48.2	45.5	43	40.2							20
22	43.5	43.4	43.4	43	42.8	42.4	42.3	41.9	40.4	38.1	35.9	33.9					22
24		38.3	38.4	38	37.8	37.4	37.4	37	37	35.8	34	32.3	30.5	28.6			24
26		34.1	34.3	34	33.8	33.4	33.4	33	33	32.6	32	30.6	29.1	27.4	25.9	24.2	26
28			30.9	30.6	30.5	30.1	30.1	29.7	29.7	29.3	29.2	28.8	27.5	26.1	24.7	23.3	28
30				27.8	27.7	27.4	27.3	27	26.9	26.5	26.4	26	25.9	24.7	23.5	22.2	30
32				25.3	25.3	25	25	24.6	24.6	24.2	24.1	23.6	23.5	23.2	22.3	21.2	32
34					23.2	22.9	22.9	22.6	22.5	22.2	22	21.6	21.5	21.2	21	20.1	34
36						21.1	21.1	20.8	20.8	20.4	20.3	19.9	19.8	19.4	19.2	18.9	36
38							19.4	19.5	19.2	19.2	18.8	18.7	18.3	18.2	17.9	17.7	38
40								18.1	17.8	17.8	17.5	17.4	17	16.9	16.5	16.4	40
42									16.5	16.6	16.2	16.1	15.7	15.6	15.3	15.1	42
44										15.3	15.4	15.1	15	14.6	14.5	14.2	44
46											14.4	14.1	14	13.6	13.6	13.2	46
48												13.2	13.1	12.7	12.6	12.3	48
50													12.2	11.9	11.8	11.5	50
52														11.4	11.1	11.1	52
54															10.4	10.3	54
56																9.7	56
58																9.1	58
配重 Countweight	85+30	85+30	85+30	85+30	85+30	85+30	85+30	85+30	85+30	85+30	85+30	85+30	85+30	85+30	85+30	85+30	配重 Countweight
倍率 Parts of line	8	7	7	6	6	5	5	4	4	3	3	3	3	3	3	2	倍率 Parts of line

典型工况 Typical Working Conditions

A、主臂工作角度85°
A、Main boom working angle is 85°

幅度/m Radius/m	主臂50m, 主臂角度85°, 塔式副臂长度/m Boom Length50m, Boom Angle85°, Tower Jib Length/m																幅度/m Radius/m	
	18	21	24	27	30	33	36	39	42	45	48	51	54	57	60	63		
13	81.2																13	
14	76.5	74.2															14	
15	71.7	70.3	68.2	64.8													15	
16	67.5	66.3	65.1	62.5	58.9												16	
17	63.8	62.6	61.6	60.1	56.8	53.4											17	
18	59.1	58.9	58.4	57.3	54.7	51.6	48.7										18	
19	54.5	54.3	54.2	53.8	52.5	49.7	47.2	44.3									19	
20	50.5	50.3	50.3	49.8	49.6	47.9	45.6	43	40.6								20	
22	43.9	43.8	43.8	43.4	43.2	42.8	42.3	40.2	38.3	36.1	34.1	32.2					22	
24	38.5	38.6	38.7	38.3	38.1	37.7	37.6	37.2	35.8	34	32.3	30.7	29	27.2			24	
26		34.4	34.5	34.2	34	33.6	33.6	33.2	33.1	31.9	30.4	29.1	27.6	26.1	24.6	23.1	26	
28			31.1	30.8	30.7	30.3	30.2	29.9	29.8	29.4	28.6	27.4	26.2	24.8	23.6	22.2	28	
30				27.9	27.8	27.5	27.4	27.1	27	26.6	26.5	25.7	24.7	23.5	22.4	21.2	30	
32				25.4	25.4	25.1	25	24.7	24.6	24.3	24.1	23.7	23.3	22.2	21.3	20.2	32	
34					23.3	23	23	22.6	22.6	22.2	22.1	21.7	21.6	20.9	20.1	19.2	34	
36						21.1	21.2	20.8	20.8	20.4	20.3	19.9	19.8	19.4	19	18.2	36	
38						19.5	19.6	19.2	19.2	18.9	18.7	18.3	18.2	17.9	17.7	17.2	38	
40							18.1	17.8	17.8	17.5	17.4	17	16.9	16.5	16.3	16	40	
42								16.5	16.6	16.2	16.1	15.7	15.6	15.3	15.1	14.8	42	
44								15	15.1	14.9	14.9	14.6	14.5	14.2	13.9	13.5	44	
46									13.9	13.8	13.7	13.6	13.5	13.2	13	12.6	46	
48										12.7	12.7	12.6	12.5	12.3	12.1	11.8	48	
50										11.7	11.7	11.7	11.6	11.4	11.3	10.9	50	
52											10.9	10.8	10.8	10.7	10.5	10.2	52	
54												10	10	9.9	9.8	9.5	54	
56													9.3	9.3	9.2	9.2	9.5	56
58														8.7	8.6	8.6	8.3	58
配重 Countweight	85+30	85+30	85+30	85+30	85+30	85+30	85+30	85+30	85+30	85+30	85+30	85+30	85+30	85+30	85+30	85+30	配重 Countweight	
倍率 Parts of line	7	6	6	6	5	5	4	4	4	3	3	3	3	3	2	2	倍率 Parts of line	

A、主臂工作角度85°
A、Main boom working angle is 85°

幅度/m Radius/m	主臂53m, 主臂工作角度85°, 塔式副臂长度/m Boom Length53m, Boom Angle85°, Tower Jib Length/m																幅度/m Radius/m
	18	21	24	27	30	33	36	39	42	45	48	51	54	57	60	63	
13	76.4																13
14	73.6	69.9															14
15	70.2	67.4	64.2														15
16	66.2	64.9	61.9	58.4													16
17	62.6	61.4	59.2	56.2	53.1	50											17
18	59.3	58.2	56.6	53.9	51.2	48.3	45.7										18
19	55.2	54.9	53.9	51.5	49.2	46.6	44.3	41.6									19
20	51.1	50.9	50.8	49.2	47.2	44.9	42.8	40.4	38.3								20
22	44.3	44.2	44.2	43.7	43.2	41.4	39.8	37.8	36.1	34	32.2						22
24	38.9	38.9	39	38.6	38.4	38	36.7	35.2	33.8	32.1	30.5	29	27.5	25.8			24
26		34.6	34.8	34.4	34.2	33.8	33.8	32.6	31.4	30	28.7	27.4	26.1	24.7	23.4	21.9	26
28			31.3	30.9	30.8	30.4	30.4	30	29.2	28	27	25.8	24.8	23.5	22.3	21	28
30			28.2	28	27.9	27.6	27.5	27.1	27	26	25.2	24.3	23.3	22.2	21.2	20.1	30
32				25.5	25.5	25.1	25.1	24.7	24.7	24.1	23.5	22.7	22	21	20.1	19.1	32
34					23.3	23	23	22.7	22.6	22.2	21.8	21.2	20.6	19.8	19	18.1	34
36						21.2	21.2	20.8	20.8	20.5	20.2	19.7	19.2	18.6	17.9	17.2	36
38						19.5	19.6	19.2	19.2	18.9	18.7	18.3	18	17.4	16.9	16.2	38
40							18	17.8	17.8	17.5	17.4	17	16.7	16.3	15.8	15.3	40
42								16.4	16.4	16.2	16.1	15.7	15.6	15.2	14.8	14.3	42
44									15	15.1	14.9	14.9	14.6	14.5	14.2	13.9	44
46										13.9	13.8	13.7	13.6	13.5	13.2	13	46
48											12.7	12.7	12.6	12.5	12.3	12.1	48
50											11.7	11.7	11.7	11.6	11.4	11.3	50
52												10.9	10.8	10.8	10.7	10.5	52
54													10	10	9.9	9.8	54
56														9.3	9.3	9.2	56
58															8.7	8.6	58
配重 Countweight	85+30	85+30	85+30	85+30	85+30	85+30	85+30	85+30	85+30	85+30	85+30	85+30	85+30	85+30	85+30	85+30	配重 Countweight
倍率 Parts of line	7	6	6	5	5	4	4	4	3	3	3	3	3	3	2	2	倍率 Parts of line

典型工况 Typical Working Conditions

A、主臂工作角度85°

A、Main boom working angle is 85°

幅度/m Radius/m	主臂56m, 主臂角度85°, 塔式副臂长度/m Boom Length56m, Boom Angle85°, Tower Jib Length/m																幅度/m Radius/m
	18	21	24	27	30	33	36	39	42	45	48	51	54	57	60	63	
13	66.9																13
14	63.9	60.8															14
15	58.8	58.7	55.6														15
16	54.5	54.4	53.9	51.1													16
17	50.8	50.7	50.7	49.3	46.6												17
18	47.6	47.4	47.4	47.2	45	42.4											18
19	44.7	44.5	44.5	44.3	43.3	40.9	38.8	36.5									19
20	42.2	42	42	41.7	41.5	39.5	37.6	35.4	33.6								20
22	37.8	37.7	37.6	37.4	37.3	36.5	35	33.2	31.7	29.9	28.3						22
24	34.3	34.1	34.1	33.9	33.7	33.5	32.3	30.9	29.7	28.2	26.8	25.4	24.1				24
26		31.2	31.1	30.9	30.8	30.6	29.8	28.6	27.6	26.4	25.2	24.1	22.9	21.6	20.5	19.2	26
28			28.7	28.4	28.3	28	27.3	26.4	25.6	24.6	23.7	22.7	21.7	20.6	19.6	18.4	28
30			26.5	26.3	26	25.5	25	24.3	23.7	22.9	22.1	21.3	20.5	19.5	18.6	17.6	30
32				23.9	23.6	23.2	22.9	22.3	21.9	21.2	20.6	19.9	19.2	18.4	17.6	16.7	32
34					21.4	21.1	20.9	20.4	20.1	19.6	19.1	18.5	18	17.3	16.6	15.9	34
36					19.4	19.2	19	18.7	18.5	18.1	17.7	17.2	16.8	16.2	15.7	15	36
38						17.4	17.4	17.2	17	16.7	16.4	16	15.7	15.2	14.7	14.1	38
40							15.9	15.7	15.6	15.4	15.2	14.9	14.6	14.2	13.8	13.3	40
42								14.4	14.4	14.2	14	13.8	13.6	13.2	12.9	12.5	42
44									13.2	13.2	13	13	12.7	12.6	12.3	12.1	44
46										12.1	12	12	11.8	11.7	11.4	11.2	46
48											11.1	11.1	10.9	10.9	10.6	10.5	48
50											10.2	10.2	10.1	10.1	9.9	9.8	50
52												9.4	9.3	9.3	9.2	9.1	52
54													8.6	8.7	8.5	8.5	54
56														8	8	7.9	56
58															7.4	7.4	58
配重 Countweight	85+30	85+30	85+30	85+30	85+30	85+30	85+30	85+30	85+30	85+30	85+30	85+30	85+30	85+30	85+30	85+30	配重 Countweight
倍率 Parts of line	6	5	5	5	4	4	4	3	3	3	3	2	2	2	2	2	倍率 Parts of line

B、主臂工作角度75°

B、Boom Length Boom Angle 75°

幅度/m Radius/m	主臂23m, 主臂工作角度75°, 塔式副臂长度/m Boom Length23m, Boom Angle75°, Tower Jib Length/m																幅度/m Radius/m
	18	21	24	27	30	33	36	39	42	45	48	51	54	57	60	63	
17	63.2																17
18	59.4	59.1															18
19	56	55.7	55.6														19
20	53	52.7	52.5														20
22	47.7	47.5	47.3	47	46.7												22
24	43.3	43.1	43	42.7	42.3	42											24
26		39.4	39.3	39	38.7	38.4	38.2	37.9									26
28		36	36	35.7	35.5	35.2	35.1	34.8	34.7	34.4							28
30			32.9	32.7	32.5	32.2	32.1	31.8	31.7	31.5	31.3						30
32				30.1	29.9	29.6	29.5	29.2	29.2	28.9	28.7	28.5	28.4				32
34				27.8	27.6	27.4	27.3	27	27	26.7	26.5	26.2	26.1	25.9			34
36					25.6	25.4	25.3	25.1	25	24.7	24.6	24.3	24.2	23.9	23.7	23.2	36
38						23.7	23.6	23.3	23.3	23	22.9	22.6	22.5	22.2	22	21.8	38
40							22.1	22	21.8	21.7	21.5	21.3	21	21	20.7	20.5	40
42								20.6	20.4	20.3	20.1	19.9	19.7	19.6	19.3	19.1	42
44										19.1	19.1	18.8	18.7	18.4	18.3	18.1	44
46											17.9	17.7	17.6	17.3	17.2	16.9	46
48												16.9	16.7	16.5	16.3	16.2	48
50													15.7	15.6	15.3	15.2	50
52														14.7	14.5	14.4	52
54															13.9	13.6	54
56																12.9	56
58																12.1	58
60																11.5	60
62																10.8	62
64																10.5	64
配重 Countweight	85+30	85+30	85+30	85+30	85+30	85+30	85+30	85+30	85+30	85+30	85+30	85+30	85+30	85+30	85+30	85+30	配重 Countweight
倍率 Parts of line	6	5	5	4	4	4	3	3	3	3	3	3	3	3	2	2	倍率 Parts of line

典型工况 Typical Working Conditions

B、主臂工作角度75°
B、Boom Length Boom Angle 75°

幅度/m Radius/m	主臂26m, 主臂角度75°, 塔式副臂长度/m Boom Length26m, Boom Angle75°, Tower Jib Length/m																幅度/m Radius/m	
	18	21	24	27	30	33	36	39	42	45	48	51	54	57	60	63		
18	58.9																18	
19	55.5	55.2															19	
20	52.5	52.2	52														20	
22	47.3	47	46.9	46.5													22	
24	43	42.7	42.6	42.2	41.9	41.6											24	
26	39.2	39.1	39	38.6	38.3	38	37.8										26	
28		35.7	35.7	35.4	35.1	34.8	34.7	34.4	34.3								28	
30			32.7	32.4	32.1	31.9	31.7	31.5	31.4	31.1	30.9						30	
32			30	29.8	29.6	29.3	29.2	28.9	28.9	28.6	28.4	28.1					32	
34				27.6	27.4	27.1	27	26.7	26.7	26.4	26.2	25.9	25.8	25.5			34	
36					25.4	25.2	25	24.8	24.7	24.5	24.3	24	23.9	23.6	23.4		36	
38					23.6	23.4	23.3	23.1	23	22.7	22.6	22.3	22.2	21.9	21.7	21.4	38	
40						21.8	21.8	21.5	21.5	21.2	21	20.8	20.7	20.4	20.2	19.9	40	
42								20.4	20.1	20.1	19.8	19.7	19.4	19.3	19	18.8	42	
44										18.9	18.9	18.6	18.4	18.2	18.1	17.8	44	
46											17.7	17.7	17.5	17.3	17.1	17	46	
48												16.7	16.5	16.3	16	15.7	48	
50													15.5	15.4	15.1	15	50	
52														14.6	14.5	14.3	52	
54															13.7	13.5	54	
56																12.7	56	
58																12	58	
60																11.2	60	
62																10.3	62	
64																9.7	64	
66																9	66	
68																	8.2	68
配重 Countweight	85+30	85+30	85+30	85+30	85+30	85+30	85+30	85+30	85+30	85+30	85+30	85+30	85+30	85+30	85+30	85+30	配重 Countweight	
倍率 Parts of line	6	5	5	4	4	4	3	3	3	3	3	3	2	2	2	2	倍率 Parts of line	

B、主臂工作角度75°
B、Boom Length Boom Angle 75°

幅度/m Radius/m	主臂29m, 主臂工作角度75°, 塔式副臂长度/m Boom Length29m, Boom Angle75°, Tower Jib Length/m																幅度/m Radius/m	
	18	21	24	27	30	33	36	39	42	45	48	51	54	57	60	63		
18	58.2																18	
19	54.9																19	
20	51.9	51.6															20	
22	46.8	46.5	46.3	46													22	
24	42.5	42.2	42.1	41.7	41.4												24	
26	38.8	38.6	38.5	38.2	37.8	37.5	37.3										26	
28		35.4	35.3	35	34.7	34.4	34.3	34									28	
30			32.3	32.1	31.8	31.5	31.4	31.1	31	30.7							30	
32				29.8	29.5	29.3	29	28.8	28.6	28.5	28.2	28	27.7				32	
34					27.3	27.1	26.8	26.7	26.4	26.3	26	25.8	25.6	25.4			34	
36						25.1	24.9	24.7	24.5	24.4	24.1	23.9	23.7	23.5	23.3	23.1	36	
38							23.4	23.1	23	22.8	22.7	22.4	22.3	22	21.9	21.6	38	
40								21.6	21.5	21.3	21.2	20.9	20.8	20.5	20.4	20.1	40	
42									20.1	19.9	19.8	19.6	19.4	19.1	19	18.7	42	
44										18.9	18.6	18.6	18.4	18.2	17.9	17.8	44	
46											17.5	17.5	17.2	17.1	16.8	16.7	46	
48												16.5	16.2	16.1	15.8	15.7	48	
50													15.5	15.3	15.1	14.9	50	
52														14.4	14.3	14	52	
54															13.5	13.2	54	
56															12.7	12.4	56	
58																11.6	58	
60																10.9	60	
62																9.9	62	
64																9.3	64	
66																	8.7	66
68																		68
配重 Countweight	85+30	85+30	85+30	85+30	85+30	85+30	85+30	85+30	85+30	85+30	85+30	85+30	85+30	85+30	85+30	85+30	配重 Countweight	
倍率 Parts of line	6	5	4	4	4	3	3	3	3	3	3	3	3	3	3	2	倍率 Parts of line	

典型工况 Typical Working Conditions

B、主臂工作角度75°
B、Boom Length Boom Angle 75°

幅度/m Radius/m	主臂32m, 主臂角度75°, 塔式副臂长度/m Boom Length32m, Boom Angle75°, Tower Jib Length/m																幅度/m Radius/m				
	18	21	24	27	30	33	36	39	42	45	48	51	54	57	60	63					
19	54.4																19				
20	51.5																20				
22	46.4	46.1	45.9														22				
24	42.1	41.9	41.7	41.3	41												24				
26	38.5	38.3	38.1	37.8	37.4	37.1											26				
28		35.1	35	34.7	34.4	34.1	33.9	33.6									28				
30		32.1	32	31.7	31.4	31.2	31	30.7	30.6								30				
32			29.5	29.2	28.9	28.7	28.5	28.2	28.1	27.8	27.6						32				
34				27	26.8	26.5	26.3	26.1	26	25.7	25.5	25.2	25.1				34				
36				25	24.8	24.6	24.4	24.2	24.1	23.8	23.6	23.3	23.2	22.9			36				
38					23.1	22.9	22.8	22.5	22.4	22.1	22	21.7	21.5	21.3	21.1	20.8	38				
40						21.4	21.2	21	20.9	20.6	20.5	20.2	20.1	19.8	19.6	19.3	40				
42						20	19.9	19.6	19.6	19.3	19.1	18.8	18.7	18.5	18.3	18	42				
44							18.6	18.4	18.4	18.1	17.9	17.6	17.5	17.3	17.1	16.8	44				
46								17.3	17.3	17	16.8	16.6	16.5	16.2	16	15.7	46				
48									16.2	16.2	16	15.8	15.6	15.5	15.2	15	14.7	48			
50										15.3	15.1	14.9	14.7	14.6	14.3	14.1	13.8	50			
52											14.2	14.1	13.8	13.7	13.5	13.3	13	52			
54												13.4	13.3	13	12.9	12.7	12.5	12.2	54		
56													12.5	12.3	12.2	11.9	11.8	11.5	56		
58														11.5	11.5	11.2	11	10.7	58		
60															10.8	10.5	10.3	10	60		
62																9.8	9.7	9.4	62		
64																	9.2	9.1	8.8	64	
66																		8.5	8.2	66	
68																			8	7.7	68
配重 Countweight	85+30	85+30	85+30	85+30	85+30	85+30	85+30	85+30	85+30	85+30	85+30	85+30	85+30	85+30	85+30	85+30	85+30	85+30	85+30	85+30	配重 Countweight
倍率 Parts of line	5	4	4	4	4	3	3	3	3	3	3	2	2	2	2	2	2	2	2	2	倍率 Parts of line

B、主臂工作角度75°
B、Boom Length Boom Angle 75°

幅度/m Radius/m	主臂35m, 主臂工作角度75°, 塔式副臂长度/m Boom Length35m, Boom Angle75°, Tower Jib Length/m																幅度/m Radius/m					
	18	21	24	27	30	33	36	39	42	45	48	51	54	57	60	63						
20	50.8																				20	
22	45.8	45.5																			22	
24	41.6	41.3	41.1	40.8																	24	
26	38.1	37.8	37.6	37.3	36.9	36.6															26	
28	34.8	34.7	34.6	34.2	33.9	33.6	33.4														28	
30		31.7	31.7	31.4	31.1	30.8	30.6	30.3	30.2												30	
32			29.1	28.9	28.6	28.3	28.1	27.8	27.7	27.4											32	
34			26.9	26.7	26.4	26.1	26	25.7	25.6	25.3	25.1	24.8									34	
36				24.8	24.5	24.3	24.1	23.8	23.7	23.5	23.3	23	22.8	22.5							36	
38					22.8	22.6	22.4	22.2	22.1	21.8	21.6	21.3	21.2	20.9	20.7						38	
40					21.3	21.1	20.9	20.7	20.6	20.3	20.1	19.8	19.7	19.4	19.2	18.9					40	
42						19.7	19.6	19.3	19.3	19	18.8	18.5	18.4	18.1	17.9	17.6					42	
44							18.4	18.1	18.1	17.8	17.6	17.4	17.2	17	16.8	16.5					44	
46								17.2	17	17	16.7	16.6	16.3	16.2	15.9	15.7	15.4				46	
48									16	16	15.7	15.6	15.3	15.2	14.9	14.7	14.4				48	
50											15.1	14.8	14.7	14.4	14.3	14	13.8	13.5			50	
52												14	13.8	13.6	13.5	13.2	13	12.7			52	
54													13.2	13.1	12.8	12.7	12.4	12.2	12		54	
56														12.3	12.1	12	11.7	11.5	11.3		56	
58															11.4	11.3	11.1	10.9	10.6		58	
60																10.7	10.7	10.4	10.2	9.9	60	
62																	10	9.7	9.6	9.3	62	
64																		9.1	9	8.7	64	
66																			8.5	8.4	8.1	66
68																				7.9	7.6	68
70																					7.1	70
72																					6.6	72
配重 Countweight	85+30	85+30	85+30	85+30	85+30	85+30	85+30	85+30	85+30	85+30	85+30	85+30	85+30	85+30	85+30	85+30	85+30	85+30	85+30	85+30	85+30	配重 Countweight
倍率 Parts of line	5	4	4	4	4	3	3	3	3	3	3	2	2	2	2	2	2	2	2	2	2	倍率 Parts of line

典型工况 Typical Working Conditions

B、主臂工作角度75°
B、Boom Length Boom Angle 75°

幅度/m Radius/m	主臂38m, 主臂角度75°, 塔式副臂长度/m Boom Length38m, Boom Angle75°, Tower Jib Length/m																幅度/m Radius/m	
	18	21	24	27	30	33	36	39	42	45	48	51	54	57	60	63		
22	45.3	44.9															22	
24	41.1	40.8	40.6														24	
26	37.6	37.3	37.2	36.8	36.4												26	
28	34.5	34.3	34.1	33.8	33.5	33.1	32.9										28	
30		31.4	31.3	31	30.6	30.3	30.2	29.8									30	
32		28.8	28.8	28.5	28.2	27.9	27.7	27.4	27.3	27							32	
34			26.6	26.4	26.1	25.8	25.6	25.3	25.2	24.9	24.7						34	
36				24.5	24.2	23.9	23.8	23.5	23.4	23.1	22.9	22.6	22.4				36	
38				22.7	22.5	22.3	22.1	21.8	21.8	21.5	21.3	21	20.8	20.5			38	
40					21	20.8	20.6	20.4	20.3	20	19.8	19.5	19.4	19.1	18.9	18.6	40	
42						19.4	19.3	19.1	19	18.7	18.5	18.2	18.1	17.8	17.6	17.3	42	
44						18.2	18.1	17.9	17.8	17.5	17.3	17	16.9	16.6	16.4	16.1	44	
46							17	16.8	16.7	16.5	16.3	16	15.9	15.6	15.4	15.1	46	
48								15.8	15.7	15.5	15.3	15	14.9	14.6	14.4	14.1	48	
50									14.8	14.6	14.4	14.1	14	13.7	13.5	13.3	50	
52										14	13.7	13.6	13.3	13.2	12.9	12.7	12.5	52
54											13	12.8	12.6	12.5	12.2	12	11.7	54
56												12.1	11.9	11.8	11.5	11.3	11	56
58												11.4	11.2	11.1	10.9	10.7	10.4	58
60													10.6	10.5	10.3	10.1	9.8	60
62														9.9	9.7	9.5	9.2	62
64														9.4	9.1	9	8.7	64
66															8.5	8.4	8.1	66
68																7.9	7.6	68
70																7.4	7.1	70
72																	6.6	72
配重 Countweight	85+30	85+30	85+30	85+30	85+30	85+30	85+30	85+30	85+30	85+30	85+30	85+30	85+30	85+30	85+30	85+30	配重 Countweight	
倍率 Parts of line	4	4	4	3	3	3	3	3	3	3	2	2	2	2	2	2	倍率 Parts of line	

B、主臂工作角度75°
B、Boom Length Boom Angle 75°

幅度/m Radius/m	主臂41m, 主臂工作角度75°, 塔式副臂长度/m Boom Length41m, Boom Angle75°, Tower Jib Length/m																幅度/m Radius/m		
	18	21	24	27	30	33	36	39	42	45	48	51	54	57	60	63			
22	44.6																22		
24	40.6	40.2	40														24		
26	37.1	36.8	36.6	36.2													26		
28	34.1	33.8	33.7	33.3	32.9	32.6											28		
30	31.1	31	30.9	30.5	30.2	29.9	29.7	29.4									30		
32		28.5	28.4	28.1	27.8	27.5	27.3	27	26.9								32		
34			26.3	26	25.7	25.4	25.2	24.9	24.8	24.5	24.3						34		
36			24.3	24.1	23.8	23.6	23.4	23.1	23	22.7	22.5	22.2					36		
38				22.4	22.2	21.9	21.8	21.5	21.4	21.1	20.9	20.6	20.4	20.1			38		
40					20.7	20.5	20.3	20	20	19.7	19.5	19.1	19	18.7	18.5		40		
42						19.1	19	18.7	18.7	18.4	18.2	17.9	17.8	17.4	17.2	16.9	42		
44						17.9	17.8	17.6	17.5	17.2	17	16.7	16.6	16.3	16.1	15.8	44		
46							16.7	16.5	16.4	16.2	16	15.7	15.6	15.3	15.1	14.8	46		
48								15.5	15.5	15.2	15	14.7	14.6	14.3	14.1	13.8	48		
50									14.6	14.6	14.3	14.1	13.8	13.7	13.5	13.2	13	50	
52										13.7	13.5	13.3	13	12.9	12.7	12.5	12.2	52	
54											12.7	12.6	12.3	12.2	11.9	11.7	11.4	54	
56												12	11.9	11.6	11.5	11.2	11	10.8	56
58													11.2	11	10.9	10.6	10.4	10.1	58
60														10.4	10.3	10	9.8	9.5	60
62															9.7	9.4	9.3	9	62
64															9.2	8.9	8.8	8.5	64
66																8.4	8.3	8	66
68																	7.8	7.5	68
70																	7.3	7	70
72																		6.6	72
配重 Countweight	85+30	85+30	85+30	85+30	85+30	85+30	85+30	85+30	85+30	85+30	85+30	85+30	85+30	85+30	85+30	85+30	85+30	配重 Countweight	
倍率 Parts of line	4	4	4	3	3	3	3	3	3	2	2	2	2	2	2	2	2	倍率 Parts of line	

典型工况 Typical Working Conditions

B、主臂工作角度75°
B、Boom Length Boom Angle 75°

幅度/m Radius/m	主臂56m, 主臂角度75°, 塔式副臂长度/m Boom Length56m, Boom Angle75°, Tower Jib Length/m																幅度/m Radius/m	
	18	21	24	27	30	33	36	39	42	45	48	51	54	57	60	63		
26	34.6																26	
28	31.9	31.5	31.2														28	
30	29.2	28.9	28.7	28.3													30	
32	26.8	26.6	26.4	26.1	25.7	25.3											32	
34	24.8	24.6	24.4	24.1	23.7	23.4	23.2	22.6									34	
36		22.8	22.7	22.3	22	21.7	21.5	21.1	20.9								36	
38			21.1	20.8	20.5	20.2	20	19.6	19.5	19.2	18.8						38	
40				19.4	19.1	18.8	18.6	18.3	18.2	17.8	17.6	17.1					40	
42				18.1	17.9	17.6	17.4	17.1	17	16.7	16.4	16.1	15.9	15.4			42	
44					16.7	16.5	16.3	16	15.9	15.6	15.4	15	14.9	14.5	14.1	13.6	44	
46						15.5	15.3	15	14.9	14.6	14.4	14.1	13.9	13.6	13.3	12.8	46	
48						14.5	14.4	14.1	14	13.7	13.5	13.2	13.1	12.7	12.5	12.1	48	
50							13.5	13.3	13.2	12.9	12.7	12.4	12.3	11.9	11.7	11.4	50	
52								12.5	12.4	12.2	12	11.7	11.5	11.2	11	10.7	52	
54									11.8	11.7	11.5	11.3	11	10.8	10.5	10.3	54	
56										11.1	10.8	10.6	10.3	10.2	9.9	9.7	9.4	56
58											10.2	10	9.7	9.6	9.3	9.1	8.8	58
60											9.6	9.5	9.2	9.1	8.8	8.6	8.3	60
62												8.7	8.6	8.3	8.1	7.8	62	
64												8.2	8.1	7.8	7.6	7.3	64	
66												7.7	7.6	7.3	7.1	6.9	66	
68													7.2	6.9	6.7	6.5	68	
70														6.5	6.3	6.1	70	
72															6	5.7	72	
74															5.6	5.3	74	
76																5	76	
配重 Countweight	85+30	85+30	85+30	85+30	85+30	85+30	85+30	85+30	85+30	85+30	85+30	85+30	85+30	85+30	85+30	85+30	配重 Countweight	
倍率 Parts of line	3	3	3	3	2	2	2	2	2	2	2	2	2	2	2	1	倍率 Parts of line	

C、主臂工作角度65°
C、Boom Length Boom Angle 65°

幅度/m Radius/m	主臂23m, 主臂工作角度65°, 塔式副臂长度/m Boom Length23m, Boom Angle65°, Tower Jib Length/m																幅度/m Radius/m			
	18	21	24	27	30	33	36	39	42	45	48	51	54	57	60	63				
24	41.6																24			
26	38	37.7															26			
28	34.5	34.3	34.2														28			
30		31.4	31.3	31	30.7												30			
32		28.9	28.8	28.5	28.2	27.9											32			
34			26.7	26.4	26.1	25.8	25.7										34			
36				24.5	24.2	24	23.8	23.5									36			
38				22.8	22.6	22.3	22.2	21.9	21.8								38			
40					21	20.8	20.7	20.4	20.3	20							40			
42						19.5	19.4	19.1	19	18.7	18.5	18.2					42			
44							18.1	17.9	17.8	17.6	17.4	17.1	17				44			
46								17	16.8	16.8	16.5	16.3	16	15.9	15.6		46			
48									15.8	15.8	15.5	15.3	15	14.9	14.7	14.5	48			
50										14.9	14.6	14.4	14.2	14.1	13.8	13.6	13.3	50		
52											14	13.8	13.6	13.3	13.2	13	12.8	52		
54												13	12.9	12.6	12.5	12.2	12	11.7	54	
56													12.1	11.9	11.8	11.5	11.3	11.1	56	
58														11.5	11.2	11.1	10.9	10.7	10.4	58
60															10.6	10.5	10.3	10.1	9.8	60
62																9.9	9.7	9.5	9.2	62
64																9.4	9.2	9	8.7	64
66																	8.7	8.5	8.2	66
68																		8	7.8	68
70																		7.5	7.3	70
72																			6.9	72
配重 Countweight	85+30	85+30	85+30	85+30	85+30	85+30	85+30	85+30	85+30	85+30	85+30	85+30	85+30	85+30	85+30	85+30	85+30	85+30	85+30	配重 Countweight
倍率 Parts of line	4	3	3	3	3	3	3	2	2	2	2	2	2	2	2	2	2	2	1	倍率 Parts of line

典型工况 Typical Working Conditions

C、主臂工作角度65°
C、Boom Length Boom Angle 65°

幅度/m Radius/m	主臂26m, 主臂角度65°, 塔式副臂长度/m Boom Length26m, Boom Angle65°, Tower Jib Length/m															幅度/m Radius/m					
	18	21	24	27	30	33	36	39	42	45	48	51	54	57	60		63				
26	37.4	37.1															26				
28	34	33.8	33.6														28				
30	31.1	30.9	30.8	30.5													30				
32		28.5	28.4	28	27.7												32				
34			26.2	25.9	25.6	25.3											34				
36			24.3	24.1	23.8	23.5	23.3										36				
38				22.4	22.1	21.9	21.7	21.4	21.3								38				
40					20.7	20.4	20.2	20	19.9	19.6							40				
42					19.3	19.1	18.9	18.7	18.6	18.3	18.1						42				
44						17.9	17.8	17.5	17.4	17.1	16.9	16.6					44				
46							16.7	16.4	16.4	16.1	15.9	15.6	15.5				46				
48								15.7	15.5	15.4	15.1	14.9	14.7	14.5	14.2		48				
50									14.5	14.5	14.2	14.1	13.8	13.7	13.4	13.2	12.9	50			
52										13.7	13.4	13.3	13	12.9	12.6	12.4	12.1	52			
54											12.7	12.5	12.2	12.1	11.9	11.7	11.4	54			
56												12	11.8	11.6	11.5	11.2	11	10.7	56		
58													11.2	10.9	10.8	10.5	10.4	10.1	58		
60														10.3	10.2	10	9.8	9.5	60		
62															9.6	9.4	9.2	8.9	62		
64																9.1	8.9	8.7	8.4	64	
66																	8.4	8.2	7.9	66	
68																		7.9	7.8	7.5	68
70																			7.4	7.1	70
72																				6.7	72
74																				6.3	74
配重 Countweight	85+30	85+30	85+30	85+30	85+30	85+30	85+30	85+30	85+30	85+30	85+30	85+30	85+30	85+30	85+30	85+30	85+30	85+30	85+30	85+30	配重 Countweight
倍率 Parts of line	3	3	3	3	3	2	2	2	2	2	2	2	2	2	2	1	1				倍率 Parts of line

C、主臂工作角度65°
C、Boom Length Boom Angle 65°

幅度/m Radius/m	主臂29m, 主臂工作角度65°, 塔式副臂长度/m Boom Length29m, Boom Angle65°, Tower Jib Length/m															幅度/m Radius/m									
	18	21	24	27	30	33	36	39	42	45	48	51	54	57	60		63								
26	36.7																				26				
28	33.4	33.1																			28				
30	30.6	30.3	30.2																		30				
32		27.9	27.8	27.5																	32				
34			25.8	25.7	25.4	25.1	24.7														34				
36				23.9	23.6	23.3	22.9	22.8													36				
38					21.9	21.6	21.4	21.2	20.9												38				
40						20.5	20.2	19.9	19.8	19.5	19.4										40				
42							18.9	18.6	18.5	18.2	18.1	17.8									42				
44								17.5	17.3	17	17	16.7	16.5								44				
46									16.4	16.3	16	15.9	15.6	15.4	15.1						46				
48										15.3	15.1	15	14.7	14.5	14.2	14.1	13.8				48				
50												14.2	14.1	13.8	13.7	13.4	13.2	12.9	12.7		50				
52													13.3	13.3	13.1	12.9	12.6	12.5	12.2	12	11.7	52			
54														12.6	12.3	12.1	11.9	11.7	11.5	11.2	10.9	54			
56																11.6	11.5	11.2	11.1	10.8	10.6	10.3	56		
58																	11	10.8	10.6	10.5	10.2	10	9.7	58	
60																		10.2	10	9.9	9.6	9.4	9.1	60	
62																			9.5	9.3	9.1	8.9	8.6	62	
64																					8.8	8.6	8.4	8.1	64
66																					8.3	8.1	7.9	7.6	66
68																						7.6	7.5	7.2	68
70																							7	6.8	70
72																							6.6	6.4	72
74																							6	6	74
配重 Countweight	85+30	85+30	85+30	85+30	85+30	85+30	85+30	85+30	85+30	85+30	85+30	85+30	85+30	85+30	85+30	85+30	85+30	85+30	85+30	85+30	85+30	85+30	85+30	85+30	配重 Countweight
倍率 Parts of line	3	3	3	3	3	3	2	2	2	2	2	2	2	2	2	2	2	2	2	2	2	1	1		倍率 Parts of line

典型工况 Typical Working Conditions

C、主臂工作角度65°
C、Boom Length Boom Angle 65°

幅度/m Radius/m	主臂32m, 主臂角度65°, 塔式副臂长度/m Boom Length32m, Boom Angle65°, Tower Jib Length/m															幅度/m Radius/m						
	18	21	24	27	30	33	36	39	42	45	48	51	54	57	60		63					
28	32.8																28					
30	30.1	29.8															30					
32	27.7	27.4	27.3	26.9													32					
34		25.4	25.2	24.9	24.5												34					
36		23.5	23.4	23.1	22.8	22.5											36					
38			21.8	21.5	21.2	20.9	20.7										38					
40				20.1	19.8	19.5	19.3	19									40					
42					18.5	18.2	18.1	17.8	17.7								42					
44					17.3	17.1	16.9	16.6	16.6	16.2	16						44					
46						16	15.9	15.6	15.5	15.2	15	14.7					46					
48							15	14.7	14.6	14.3	14.1	13.8	13.7				48					
50							14.1	13.8	13.8	13.5	13.3	13	12.9	12.5			50					
52								13	13	12.7	12.5	12.2	12.1	11.8	11.6		52					
54									12.3	12	11.8	11.5	11.4	11.1	10.9	10.6	54					
56										11.6	11.3	11.1	10.8	10.7	10.4	10.2	9.9	56				
58											10.7	10.5	10.2	10.1	9.8	9.6	9.3	58				
60												9.9	9.7	9.6	9.3	9.1	8.8	60				
62													9.1	9	8.8	8.6	8.3	62				
64														8.6	8.5	8.3	8.1	64				
66															8	7.8	7.6	66				
68																7.6	7.4	68				
70																	7	6.8	70			
72																		6.4	6.1	72		
74																				5.7	74	
76																					5.4	76
配重 Countweight	85+30	85+30	85+30	85+30	85+30	85+30	85+30	85+30	85+30	85+30	85+30	85+30	85+30	85+30	85+30	85+30	85+30	85+30	85+30	85+30	85+30	配重 Countweight
倍率 Parts of line	3	3	3	3	2	2	2	2	2	2	2	2	2	2	1	1	1					倍率 Parts of line

C、主臂工作角度65°
C、Boom Length Boom Angle 65°

幅度/m Radius/m	主臂35m, 主臂工作角度65°, 塔式副臂长度/m Boom Length35m, Boom Angle65°, Tower Jib Length/m															幅度/m Radius/m						
	18	21	24	27	30	33	36	39	42	45	48	51	54	57	60		63					
28	32.1																					28
30	29.4	29.1																				30
32	27.1	26.8	26.6																			32
34	25	24.8	24.6	24.3																		34
36		23	22.9	22.5	22.2																	36
38			21.3	21	20.7	20.3																38
40				19.9	19.6	19.3	19	18.8	18.4													40
42					18.3	18	17.7	17.6	17.2	17.1												42
44						16.9	16.6	16.5	16.1	16.1	15.7											44
46							15.8	15.6	15.5	15.2	15.1	14.7	14.5									46
48								14.7	14.5	14.2	14.2	13.9	13.6	13.3								48
50									13.7	13.4	13.3	13	12.8	12.5	12.4							50
52										12.6	12.6	12.3	12.1	11.8	11.6	11.3						52
54											11.9	11.9	11.6	11.4	11.1	11	10.6	10.4	10.1			54
56												11.2	10.9	10.7	10.4	10.3	10	9.8	9.5			56
58													10.3	10.1	9.8	9.7	9.4	9.2	8.9	8.7	8.4	58
60														9.7	9.6	9.3	9.2	8.9	8.7	8.4	8.2	60
62															9.1	8.8	8.7	8.4	8.2	7.9	7.7	62
64																8.3	8.2	7.9	7.7	7.4		64
66																	7.8	7.7	7.4	7.2	6.9	66
68																		7.3	7	6.8	6.5	68
70																			6.6	6.4	6.1	70
72																			6.2	6	5.8	72
74																				5.6	5.4	74
76																					5.1	76
配重 Countweight	85+30	85+30	85+30	85+30	85+30	85+30	85+30	85+30	85+30	85+30	85+30	85+30	85+30	85+30	85+30	85+30	85+30	85+30	85+30	85+30	85+30	配重 Countweight
倍率 Parts of line	3	3	3	2	2	2	2	2	2	2	2	2	2	2	2	2	1	1	1	1	1	倍率 Parts of line

典型工况 Typical Working Conditions

C、主臂工作角度65°
C、Boom Length Boom Angle 65°

幅度/m Radius/m	主臂38m, 主臂角度65°, 塔式副臂长度/m Boom Length38m, Boom Angle65°, Tower Jib Length/m															幅度/m Radius/m					
	18	21	24	27	30	33	36	39	42	45	48	51	54	57	60		63				
30	28.8																30				
32	26.5	26.2															32				
34	24.5	24.2	24.1														34				
36		22.5	22.3	22													36				
38		20.9	20.8	20.5	20.1	19.8											38				
40			19.4	19.1	18.8	18.4	18.2										40				
42				17.9	17.6	17.2	17.1	16.7									42				
44				16.7	16.5	16.2	16	15.7	15.5								44				
46					15.4	15.2	15	14.7	14.6	14.3							46				
48						14.3	14.1	13.8	13.7	13.4	13.2						48				
50						13.4	13.3	13	12.9	12.6	12.4	12.1	11.9				50				
52							12.5	12.2	12.2	11.9	11.6	11.3	11.2	10.9			52				
54								11.5	11.5	11.2	11	10.7	10.5	10.2	10		54				
56									10.9	10.8	10.5	10.3	10	9.9	9.6	9.4	9.1	56			
58										10.2	9.9	9.8	9.5	9.3	9	8.8	8.5	58			
60											9.4	9.2	8.9	8.8	8.5	8.3	8	60			
62												8.7	8.4	8.3	8	7.8	7.5	62			
64													8.2	7.9	7.8	7.5	7.3	7	64		
66														7.5	7.4	7.1	6.9	6.6	66		
68															7	6.7	6.5	6.2	68		
70																6.6	6.3	6.1	5.8	70	
72																	5.9	5.7	5.4	72	
74																		5.3	5.1	74	
76																			5	4.8	76
78																				4.5	78
配重 Countweight	85+30	85+30	85+30	85+30	85+30	85+30	85+30	85+30	85+30	85+30	85+30	85+30	85+30	85+30	85+30	85+30	85+30	配重 Countweight			
倍率 Parts of line	3	3	2	2	2	2	2	2	2	2	1	1	1	1	1	1	1	倍率 Parts of line			

C、主臂工作角度65°
C、Boom Length Boom Angle 65°

幅度/m Radius/m	主臂41m, 主臂工作角度65°, 塔式副臂长度/m Boom Length41m, Boom Angle65°, Tower Jib Length/m															幅度/m Radius/m						
	18	21	24	27	30	33	36	39	42	45	48	51	54	57	60		63					
32	25.9																	32				
34	23.9	23.6	23.4															34				
36	22.2	21.9	21.7	21.4														36				
38		20.4	20.2	19.9	19.5													38				
40			18.9	18.6	18.2	17.9												40				
42			17.7	17.4	17	16.7	16.5											42				
44				16.3	16	15.6	15.5	15.1										44				
46					15	14.7	14.5	14.2	14.1	13.7								46				
48						14.1	13.8	13.6	13.3	13.2	12.9	12.7						48				
50							13	12.8	12.5	12.4	12.1	11.9	11.6					50				
52								12.1	11.8	11.7	11.4	11.2	10.8	10.7				52				
54									11.4	11.1	11	10.7	10.5	10.2	10.1	9.7		54				
56										10.5	10.4	10.1	9.9	9.6	9.5	9.1	8.9	56				
58											9.8	9.5	9.3	9	8.9	8.6	8.4	8	58			
60												9.3	9	8.8	8.5	8.4	8.1	7.9	7.5	60		
62													8.5	8.3	8	7.9	7.6	7.4	7	62		
64														7.8	7.6	7.4	7.1	6.9	6.6	64		
66															7.4	7.1	7	6.7	6.5	6.2	66	
68																6.7	6.6	6.3	6.1	5.8	68	
70																	6.2	5.9	5.7	5.4	70	
72																			5.6	5.4	5.1	72
74																			5.2	5	4.7	74
76																				4.7	4.4	76
78																					4.1	78
80																					3.8	80
配重 Countweight	85+30	85+30	85+30	85+30	85+30	85+30	85+30	85+30	85+30	85+30	85+30	85+30	85+30	85+30	85+30	85+30	85+30	85+30	85+30	85+30	85+30	配重 Countweight
倍率 Parts of line	2	2	2	2	2	2	2	2	2	2	2	2	2	2	2	1	1	1	1	1	1	倍率 Parts of line

典型工况 Typical Working Conditions

C、主臂工作角度65°
C、Boom Length Boom Angle 65°

幅度/m Radius/m	主臂44m, 主臂角度65°, 塔式副臂长度/m Boom Length44m, Boom Angle65°, Tower Jib Length/m															幅度/m Radius/m				
	18	21	24	27	30	33	36	39	42	45	48	51	54	57	60		63			
32	25.3																32			
34	23.4	23															34			
36	21.7	21.4	21.2														36			
38	20.1	19.9	19.7	19.4													38			
40		18.6	18.4	18.1	17.7												40			
42			17.2	16.9	16.5	16.2											42			
44			16.1	15.8	15.5	15.2	15	14.6									44			
46				14.9	14.6	14.2	14	13.7	13.6								46			
48					13.7	13.4	13.2	12.9	12.8	12.4							48			
50						12.6	12.4	12.1	12	11.7	11.4						50			
52						11.8	11.7	11.4	11.3	11	10.7	10.4					52			
54							11	10.7	10.6	10.3	10.1	9.8	9.6				54			
56								10.1	10	9.7	9.5	9.2	9.1	8.7	8.5		56			
58									9.5	9.5	9.2	9	8.6	8.5	8.2	8	7.6	58		
60										8.9	8.6	8.4	8.1	8	7.7	7.5	7.1	60		
62											8.1	7.9	7.6	7.5	7.2	7	6.6	62		
64											7.7	7.5	7.2	7.1	6.8	6.6	6.2	64		
66												7.1	6.8	6.7	6.4	6.2	5.8	66		
68													6.4	6.3	6	5.8	5.5	68		
70														6	5.9	5.6	5.4	70		
72															5.5	5.3	5.1	72		
74																4.9	4.7	4.4	74	
76																	4.4	4.1	76	
78																		4.1	3.8	78
80																			3.6	80
配重 Countweight	85+30	85+30	85+30	85+30	85+30	85+30	85+30	85+30	85+30	85+30	85+30	85+30	85+30	85+30	85+30	85+30	85+30	85+30	配重 Countweight	
倍率 Parts of line	2	2	2	2	2	2	2	2	2	1	1	1	1	1	1	1	1	1	倍率 Parts of line	

C、主臂工作角度65°
C、Boom Length Boom Angle 65°

幅度/m Radius/m	主臂47m, 主臂工作角度65°, 塔式副臂长度/m Boom Length47m, Boom Angle65°, Tower Jib Length/m															幅度/m Radius/m							
	18	21	24	27	30	33	36	39	42	45	48	51	54	57	60		63						
34	22.7																		34				
36	21	20.7																	36				
38	19.6	19.3	19.1																38				
40		18	17.8	17.5	17.1														40				
42			16.8	16.7	16.3	16	15.6												42				
44				15.6	15.3	15	14.6	14.4											44				
46					14.4	14	13.7	13.5	13.1										46				
48						13.5	13.2	12.9	12.7	12.3	12.2								48				
50							12.4	12.1	11.9	11.6	11.5	11.1							50				
52								11.4	11.2	10.9	10.8	10.5	10.2	9.9					52				
54									10.7	10.6	10.3	10.2	9.8	9.6	9.3	9.1			54				
56										10	9.7	9.6	9.3	9	8.7	8.6	8.2		56				
58											9.1	9	8.7	8.5	8.2	8	7.7	7.5	58				
60												8.5	8.2	8	7.7	7.6	7.2	7	6.7	60			
62													8.1	7.7	7.5	7.2	7.1	6.8	6.5	6.2	62		
64														7.3	7.1	6.8	6.7	6.4	6.1	5.8	64		
66															6.7	6.4	6.3	6	5.7	5.4	66		
68																6.3	6	5.9	5.6	5.4	5.1	68	
70																	5.7	5.5	5.2	5	4.7	70	
72																		5.2	4.9	4.7	4.4	72	
74																			4.9	4.6	4.4	4.1	74
76																				4.3	4.1	3.8	76
78																					3.8	3.5	78
80																					3.5	3.2	80
82																						3	82
配重 Countweight	85+30	85+30	85+30	85+30	85+30	85+30	85+30	85+30	85+30	85+30	85+30	85+30	85+30	85+30	85+30	85+30	85+30	85+30	85+30	85+30	85+30	85+30	配重 Countweight
倍率 Parts of line	2	2	2	2	2	2	2	2	2	1	1	1	1	1	1	1	1	1	1	1	1	1	倍率 Parts of line

典型工况 Typical Working Conditions

C、主臂工作角度65°
C、Boom Length Boom Angle 65°

幅度/m Radius/m	主臂50m, 主臂角度65°, 塔式副臂长度/m Boom Length50m, Boom Angle65°, Tower Jib Length/m																幅度/m Radius/m	
	18	21	24	27	30	33	36	39	42	45	48	51	54	57	60	63		
36	20.4	20.1															36	
38	19	18.7	18.5														38	
40	17.7	17.4	17.3	16.9													40	
42		16.3	16.1	15.8	15.4												42	
44			15.1	14.8	14.4	14.1											44	
46			14.2	13.9	13.5	13.2	13										46	
48				13	12.7	12.4	12.2	11.8									48	
50					11.9	11.6	11.4	11.1	11	10.6							50	
52					11.2	10.9	10.8	10.4	10.3	10	9.7						52	
54						10.3	10.1	9.8	9.7	9.4	9.1	8.8					54	
56							9.5	9.2	9.1	8.8	8.6	8.2	8.1				56	
58							9	8.7	8.6	8.3	8.1	7.7	7.6	7.2			58	
60								8.2	8.1	7.8	7.6	7.3	7.1	6.8	6.5		60	
62									7.6	7.3	7.1	6.8	6.7	6.3	6.1	5.8	62	
64									7.2	6.9	6.7	6.4	6.3	5.9	5.7	5.4	64	
66										6.5	6.3	6	5.9	5.5	5.3	5	66	
68											5.9	5.6	5.5	5.2	5	4.7	68	
70												5.2	5.1	4.8	4.6	4.3	70	
72												4.9	4.8	4.5	4.3	4	72	
74													4.5	4.2	4	3.7	74	
76														3.9	3.7	3.4	76	
78															3.6	3.4	3.1	78
80																3.2	2.9	80
82																	2.6	82
84																	2.4	84
配重 Countweight	85+30	85+30	85+30	85+30	85+30	85+30	85+30	85+30	85+30	85+30	85+30	85+30	85+30	85+30	85+30	85+30	配重 Countweight	
倍率 Parts of line	2	2	2	2	2	2	1	1	1	1	1	1	1	1	1	1	倍率 Parts of line	

C、主臂工作角度65°
C、Boom Length Boom Angle 65°

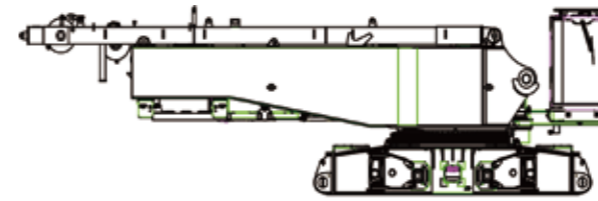
幅度/m Radius/m	主臂53m, 主臂工作角度65°, 塔式副臂长度/m Boom Length53m, Boom Angle65°, Tower Jib Length/m																幅度/m Radius/m	
	18	21	24	27	30	33	36	39	42	45	48	51	54	57	60	63		
36	19.7																36	
38	18.4	18															38	
40	17.1	16.8	16.6														40	
42	15.9	15.7	15.5	15.2													42	
44		14.7	14.6	14.2	13.8												44	
46			13.7	13.3	12.9	12.6	12.4										46	
48				12.5	12.2	11.8	11.6	11.2									48	
50				11.7	11.4	11.1	10.9	10.5	10.4								50	
52					10.7	10.4	10.2	9.9	9.8	9.4							52	
54						9.8	9.6	9.3	9.2	8.8	8.6						54	
56							9.2	9.1	8.8	8.6	8.3	8.1	7.7				56	
58								8.5	8.2	8.1	7.8	7.6	7.2	7.1	6.7		58	
60									7.7	7.7	7.3	7.1	6.8	6.6	6.3	6	60	
62										7.2	6.9	6.7	6.4	6.2	5.9	5.6	5.2	62
64											6.8	6.5	6.3	6	5.8	5.5	5.2	64
66												6.1	5.9	5.6	5.4	5.1	4.8	66
68													5.7	5.5	5.2	5.1	4.8	68
70														5.1	4.8	4.7	4.4	70
72															4.5	4.4	4.1	72
74																4.2	4.1	74
76																	3.8	76
78																		78
80																		80
82																		82
84																		84
配重 Countweight	85+30	85+30	85+30	85+30	85+30	85+30	85+30	85+30	85+30	85+30	85+30	85+30	85+30	85+30	85+30	85+30	85+30	配重 Countweight
倍率 Parts of line	2	2	2	2	2	2	1	1	1	1	1	1	1	1	1	1	1	倍率 Parts of line

典型工况 Typical Working Conditions

C、主臂工作角度65°
C、Boom Length Boom Angle 65°

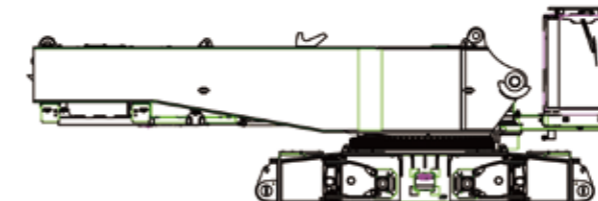
幅度/m Radius/m	主臂56m, 主臂角度65°, 塔式副臂长度/m Boom Length 56m, Boom Angle 65°, Tower Jib Length/m															幅度/m Radius/m	
	18	21	24	27	30	33	36	39	42	45	48	51	54	57	60		63
38	18																38
40	16.8	16.5															40
42	15.7	15.4	15.2	14.8													42
44		14.4	14.2	13.8	13.4												44
46		13.5	13.3	13	12.6	12.2											46
48			12.5	12.2	11.8	11.5	11.2										48
50				11.5	11.1	10.8	10.6	10.2									50
52				10.8	10.5	10.1	9.9	9.6	9.4								52
54					9.8	9.5	9.3	9	8.9	8.5							54
56						9	8.8	8.5	8.3	8	7.7	7.4					56
58							8.3	7.9	7.8	7.5	7.3	6.9	6.8				58
60							7.8	7.5	7.4	7	6.8	6.5	6.3	6			60
62								7	6.9	6.6	6.4	6.1	5.9	5.6	5.3		62
64									6.5	6.2	6	5.7	5.5	5.2	4.9	4.6	64
66									6.1	5.8	5.6	5.3	5.1	4.8	4.6	4.2	66
68										5.5	5.3	5	4.8	4.5	4.3	3.9	68
70											4.9	4.6	4.5	4.2	3.9	3.6	70
72											4.6	4.3	4.2	3.9	3.6	3.3	72
74												4	3.9	3.6	3.3	3	74
76													3.6	3.3	3.1	2.8	76
78													3.3	3	2.8	2.5	78
80														2.8	2.6	2.3	80
82															2.3	2	82
84																1.8	84
配重 Countweight	85+30	85+30	85+30	85+30	85+30	85+30	85+30	85+30	85+30	85+30	85+30	85+30	85+30	85+30	85+30	85+30	配重 Countweight
倍率 Parts of line	2	2	2	2	1	1	1	1	1	1	1	1	1	1	1	1	倍率 Parts of line

主要部件运输参数 Transport parameters of main components



主机运输方案A Basic machine transport plan A		× 1
L	12.60 m	
W	3.00 m	
H	3.30 m	
W	42.2 t	

包括主变幅卷扬及钢丝绳、操纵室、桅杆及滑轮组等，不包括转台配重自拆装、塔臂单滑轮卷扬等选配置
Include main luffing winch and rope, cab, mast, pulley block and etc. Not include optional parts such as turntable counterweight self-assembly device, tower jib single top winch



主机运输方案B Basic machine transport plan B		× 1
L	10.7 m	
W	3.00 m	
H	3.30 m	
W	35.4 t	

不包括主变幅卷扬及钢丝绳、桅杆、变幅滑轮组及转台配重自拆装和塔臂单滑轮卷扬等选配置
Not include main luffing winch and rope, mast, luffing pulley block, turntable counterweight self-assembly device, tower jib single top winch and etc.



桅杆单独运输部件 (选配) Mast separate transport parts (optional)		× 1
L	9.98 m	
W	1.94 m	
H	1.32 m	
W	6.8 t	

包括主变幅卷扬及钢丝绳、桅杆、变幅滑轮组及部分主臂拉板，不随主机运输时使用
Include main luffing winch and rope, mast, luffing pulley block and some boom pendants, it is used when not transported with basic machine



左履带梁 Left track frame		× 1
L	9.33 m	
W	1.45 m	
H	1.38 m	
W	22.5 t	

含液压管路等
Include hydraulic oil circuit

主要部件运输参数
Transport parameters of main components

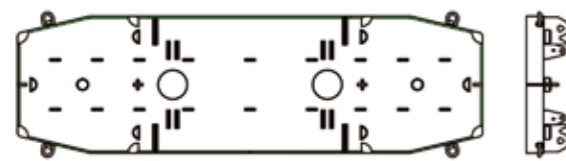


右履带梁 Right track frame	× 1
L	9.33 m
W	1.45 m
H	1.38 m
W	22.5 t

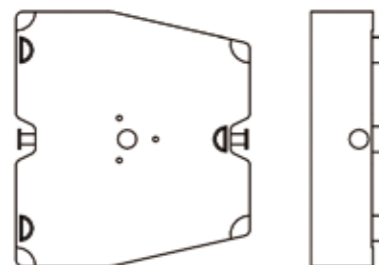
含液压管路等
Include hydraulic oil circuit



车身配重块 Car-body counterweight block	× 2
L	5.60 m
W	1.69 m
H	0.72 m
W	15 t



转台配重托盘 Turntable counterweight tray	× 1
L	7.3 m
W	2.62 m
H	0.61 m
W	15.0 t

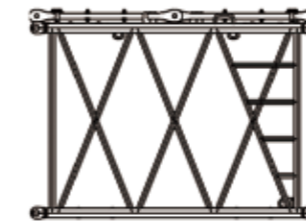


转台配重块 Turntable counterweight block	× 14
L	2.1 m
W	2.38 m
H	0.4 m
W	5.0 t



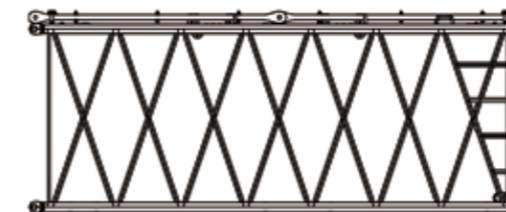
主臂底节 Boom butt	× 1
L	9.98 m
W	2.96 m
H	3.3 m
W	11.8 t

包括主副起升卷扬及各卷扬所使用的钢丝绳、主臂拉板、塔臂拉板、防后倾装置等
Include main winch, aux. winch and ropes, boom pendant, tower jib pendant, backstop device and etc.



主臂3mA节 Boom insert 3mA	× 1
L	3.17 m
W	2.5 m
H	2.36 m
W	1.1 t

包括主、塔臂拉板
Include boom and tower jib pendants



主臂6mA节 Boom insert 6mA	× 1
L	6.17 m
W	2.5 m
H	2.36 m
W	1.8 t

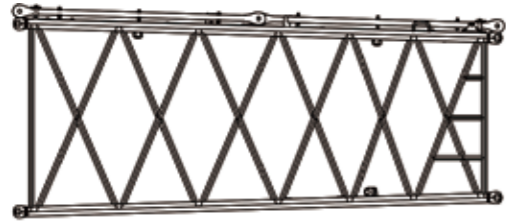
包括主、塔臂拉板
Include boom and tower jib pendants



主臂12mA节 Boom insert 12mA	× 2
L	12.18 m
W	2.5 m
H	2.36 m
W	3.1 t

包括主、塔臂拉板
Include boom and tower jib pendants

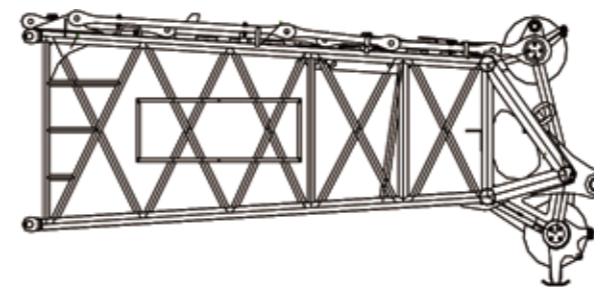
主要部件运输参数
Transport parameters of main components



主臂6m过渡节
6m boom transition section × 1

L	6.17 m
W	2.5 m
H	2.36 m
W	1.7 t

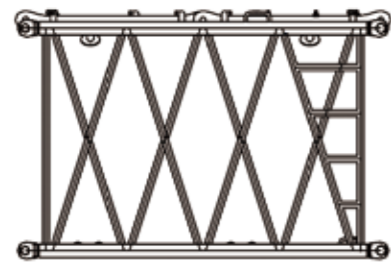
包括主、塔臂拉板
Include boom and tower jib pendants



主臂顶节
Boom top × 1

L	5.58 m
W	2.2 m
H	2.47 m
W	3.7 t

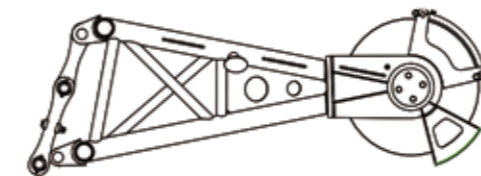
包括主、副臂拉板
Include boom and tower jib pendants



主臂3mB节
Boom insert 3mB × 2

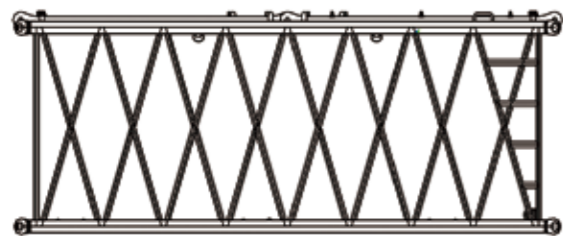
L	3.13 m
W	2.12 m
H	1.89 m
W	0.75 t

包括主、塔臂拉板
Include boom and tower jib pendants



主臂臂端单滑轮
Boom Single Top × 1

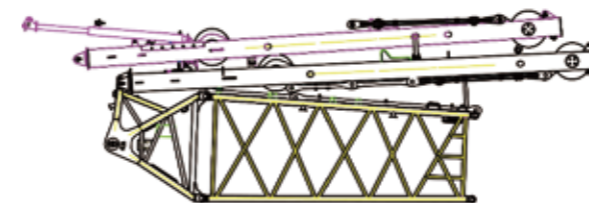
L	2.065 m
W	1.16 m
H	0.7 m
W	0.26 t



主臂6mB节
Boom insert 6mB × 1

L	6.13 m
W	2.12 m
H	1.89 m
W	1.3 t

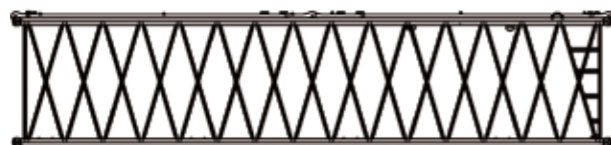
包括主、塔臂拉板
Include boom and tower jib pendants



塔臂四件套
Tower jib four-piece set × 1

L	9.66 m
W	2.4 m
H	3.19 m
W	6.0 t

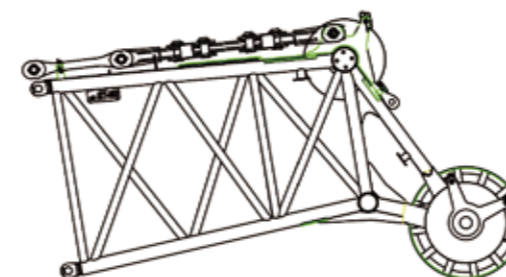
包括塔臂底节、过渡节、前支架、后支架、拉板、防后倾装置等
Include tower jib butt, transition section, front strut, rear strut, pendant, backstop device and etc.



主臂12mB节
Boom insert 12mB × 2

L	5.58 m
W	2.2 m
H	2.47 m
W	3.7 t

包括主、塔臂拉板
Include boom and tower jib pendants

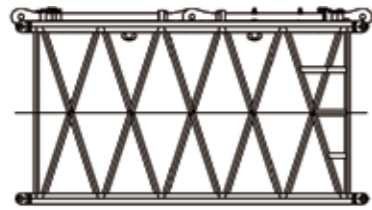


塔臂顶节
Tower Jib Top × 2

L	3.75 m
W	1.99 m
H	1.99 m
W	1.6 t

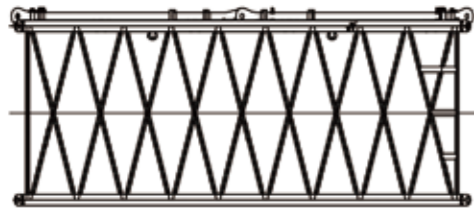
包括拉板
Include pendant

主要部件运输参数
Transport parameters of main components



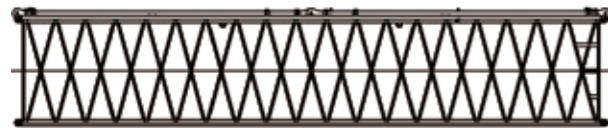
塔臂3mC节 Tower jib insert 3mC	× 1
L	3.17 m
W	1.79 m
H	1.59 m
W	0.6 t

包括拉板
Include pendant



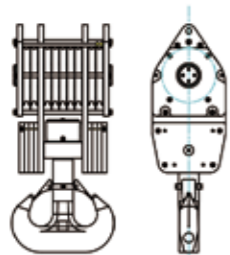
塔臂6mC节 Tower jib insert 6mC	× 1
L	6.17 m
W	1.79 m
H	1.59 m
W	1.1 t

包括拉板
Include pendant

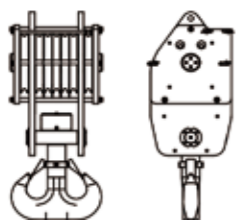


塔臂12mC节 Tower jib insert 12mC	× 2
L	12.17 m
W	1.79 m
H	1.59 m
W	2.0 t

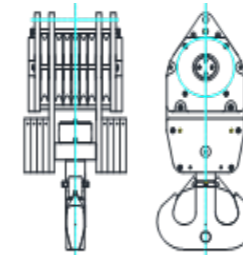
包括拉板
Include pendant



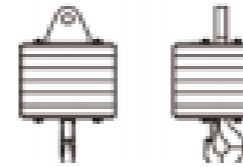
260 t起重钩总成 260t capacity hook block	选配 Optional	× 1
L		1.07 m
W		1.07 m
H		2.35 m
W		4.6 t



200t起重钩总成 200t capacity hook block	选配 Optional	× 1
L		0.99m
W		0.94 m
H		2.24 m
W		4.20 t



160t起重钩总成 160t capacity hook block	× 1
L	0.866m
W	0.76m
H	2.35 m
W	2.2t



13.5t起重钩总成 13.5t capacity hook block	× 1
L	0.485 m
W	0.485 m
H	0.485 m
W	0.50 t

注:

- 1.未列入部件包括部分卡子、小尺寸销轴、部分螺栓、小拉板或索具接头等,总重不超过3t。
- 2.由于产品制造过程中有些差异及技术改进不断完善,所列零部件规格及重量上将会有所不同。
- 3.因拉板比较容易混淆,请用户运输之前做好标记,以便区分避免混淆。

Notes:

- 1.The parts which are not listed above include clips, small size pin shafts, bolts, several small pendants or sling connectors, and etc., total weight is not more than 3t.
- 2.Slight difference is ineluctable during product manufacture, and dimension and weight of some parts are variable due to continuous improvement in products.
- 3.Various pendants are easy confused, so before transportation, customers should make marks on corresponding pendants to avoid unnecessary troubles.