

XCT100_M 汽车起重机 / Truck Crane

技术规格书

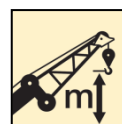
Basic technical specification



100t



58m



82m

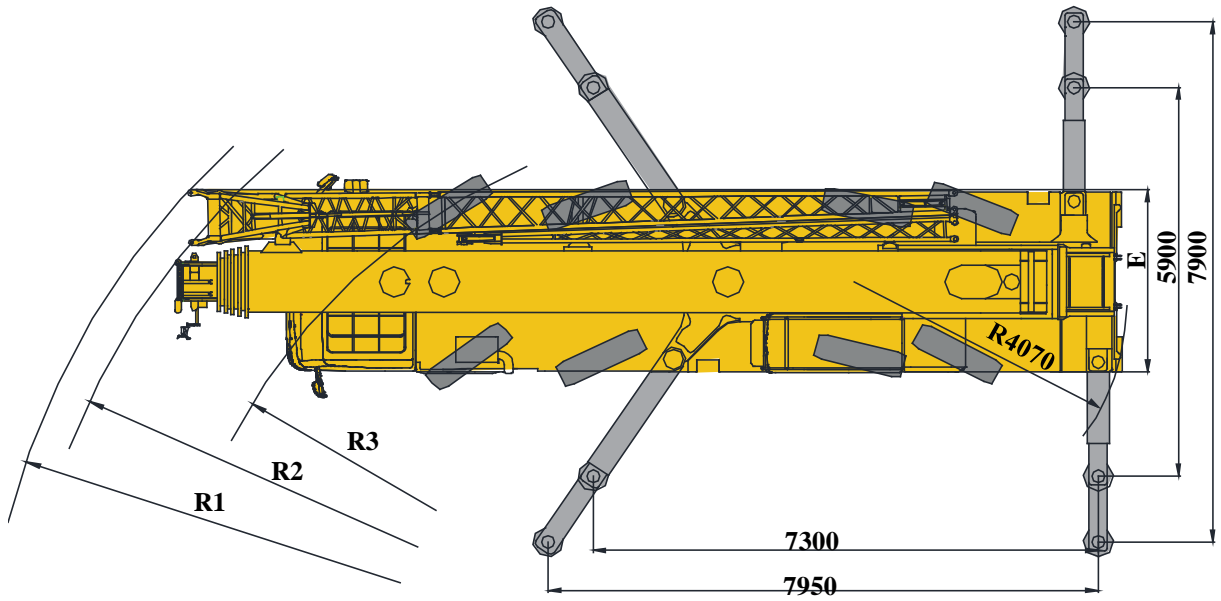
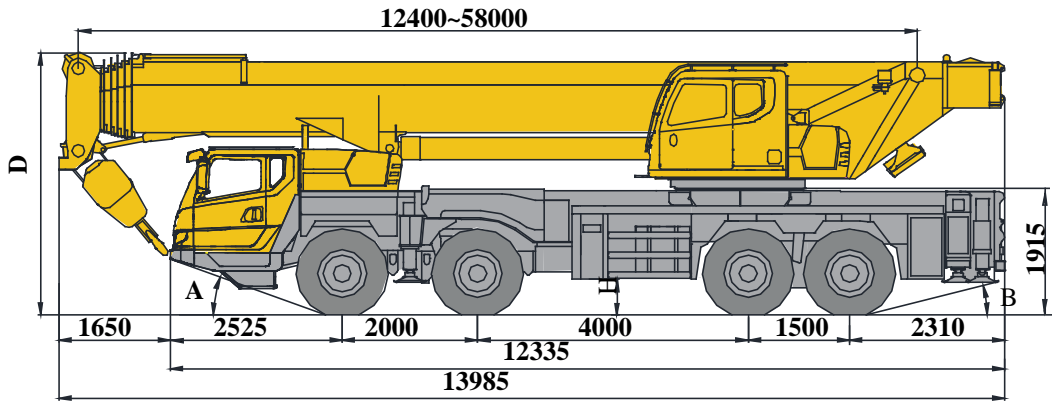


目录

Content

| | |
|---|-------|
| 目录 Content | |
| 尺寸参数 Dimensions | 3 |
| 技术规格 Product Specifications | 4-7 |
| 重量/作业速度 Weight / Working speeds | 8 |
| 平衡重 Counterweight | 9 |
| 运输部件尺寸 Transportation components dimension | 10 |
| 臂架组合方案 Boom / Jib combinations | 11 |
| 主臂 Boom | 13-16 |
| 副臂 Jib | 17-20 |
| 符号标识 Description of symbols | 21 |
| 主要技术参数表 Main technical Parameters | 22-23 |
| 主要配套件明细表 Main parts list | 24-25 |
| 注意事项 Notes | 26 |

尺寸参数 Dimensions




| | A | B | D | E | R1 | R2 | R3 | H |
|-------------------------------|-----|-----|------|------|-------|-------|-------|-----|
| 385/95 R 25 (14.00 R 25) | 21° | 15° | 3990 | 2780 | 12600 | 12000 | 10000 | 367 |

技术规格

Technical specifications

|  底盘 | 配置 |
|---|--|
| 车架 | 徐工设计、制造，全覆盖式走台板，防扭转箱型结构，高强度钢材制造。 ● |
| 支腿 | 4支腿，前摆腿后水平支腿结构，水平伸缩和垂直伸缩由液压控制，底盘两侧装有电控操纵控制台，控制台板装有水平仪、照明灯和调速按钮，支腿油缸均设有单向阀，且垂直支腿带有双向液压锁。 ● 支脚盘尺寸：φ450mm 最大起重量时支腿反力：820kN |
| 发动机 | MC11.39-30，直列六缸水冷电控柴油发动机，中国重汽，额定功率290kW/1900rpm，最大扭矩1900Nm/1000-1400rpm，国III排放标准。 ● 燃油箱容积：320L。 |
| 变速箱 | 陕齿机械式变速箱，10个前进档，2个倒档，带同步器。 ● |
| 车桥 | 名牌厂家高强度车桥，1,2桥转向，3,4桥转向驱动。 ● |
| 悬挂 | 前悬架采用少片变截面悬架，后悬架采用双纵臂板簧平衡悬架。 ● |
| 轮胎 | 8个轮胎，1个备胎，每桥均装单胎，双钱制造。 ● 轮胎规格：385/95R25（14.00R25） |
| 制动 | 行车制动：双回路气压制动，作用于所有车轮。 ● 驻车制动：弹簧储能制动，作用于3,4轴车轮。 辅助制动：发动机排气制动和缓速制动。 |
| 转向 | 全桥转向，1、2桥机械转向+液压助力，3/4桥缸控随动转向，可适应多种工况的要求，实现多种转向模式。 ● |
| 驾驶室 | 新型复合结构全宽驾驶室，全封闭、装备豪华舒适。性能上：优越的密封性和防腐蚀、防震设计；配置大视野的前挡风安全玻璃、后视镜，电控洗涤器，电子门窗升降器，带有除霜风挡的室内空气加热器，冷暖空调，收放音机等。主驾采用空气悬浮座椅副驾采用简易卧铺等。2公斤灭火器标配冷暖空调。 ● |
| 电气系统 | 直流24伏特，串联12伏特的电池组2个。 ● 发电机 28伏特-80安培。 |

|  上车 | 配置 |
|--|--|
| 结构 | 徐工设计、制造，高强度钢材制造。 ● |
| 液压系统 | 电比例变量泵用于起升、变幅、伸缩；回转采用闭式泵驱动； ● 比例电磁换向控制阀； ● 风冷式液压油散热器； ● 液压油箱有效容积：840L |
| 操纵方式 | 先导电比例操纵，无级调速，由左右2个操纵手柄控制起重机的主要动作。 ● |
| 主起升机构 | 液压控制调速，由液压马达通过行星齿轮减速器驱动，内置常闭式制动器并带有平衡阀，装有绳槽卷筒。 ● |
| 副起升机构 | 液压控制调速，由液压马达通过行星齿轮减速器驱动，内置常闭式制动器并带有平衡阀，装有绳槽卷筒。 ● |
| 回转机构 | 单排四点接触球外齿式回转支承，由液压马达通过行星齿轮减速器驱动，内置常闭式制动器，可连续回转360°，具有动力控制或自由滑转的功能，可无级调速。 ● |
| 变幅机构 | 单变幅油缸，带有负载补偿功能的变幅平衡阀，变幅下落采用平衡阀外控式重力+动力下降方式。 ● |
| 操纵室 | 钢制操纵室，无视野死角的前景窗，安全玻璃，推拉式车门，可调式座椅，可翻仰20°，装有前窗顶窗遮阳帘、雨刮器、顶部防护栏、推拉踏板，配备力矩限制器、电控扶手箱、发动机动力加速踏板、发动机起动机开关等。标配冷暖空调。2kg灭火器，出口配置6kg灭火器。 ● |
| 安全装置 | 液压平衡阀；液压溢流阀；液压双向锁；力矩限制器；三圈保护器；起升高度限位器；风速仪；卷扬监视装置 ● |
| 组合配重 | 总重29t，有6.5t、15.5t、21.6t、29t4种组合方式。 ● |

技术规格

Technical specifications



臂架系统

配置

| | | |
|--------------|--|---|
| 主臂 | 6节，“U”形截面的筒形焊接结构，单板式臂头、紧凑式臂尾。单缸插销伸缩机构 主臂长度：12.4m~58m。 | ● |
| 副臂 | 由连接架、旋转架和两节桁架结构折叠式副臂组成，具有0°、15°、30°三种安装角，收存于主臂旁。 副臂长度：10.8m、18.3m | ● |
| 臂端单滑轮 | 安装在主臂顶端，用于单股钢丝绳起重作业，起重性能与主臂相同，但最大起重量不超过7t。 | ● |
| 主臂加长节 | 桁架式焊接结构，与主臂臂头固定安装 主臂加长节长度：7m | ○ |
| 独立臂头 | 桁架式焊接结构，与主臂臂头固定安装。 独立臂头长度：2.9m | ○ |
| 起重钩 | 100t钩 | ○ |

产品各部件明细如上所述，具体部件明细请参照产品报价单


符号说明：


● —— 表示标准配置；

○ —— 表示选装配置。

技术规格

Technical specifications

|  Chassis | Configuration |
|--|---------------|
| Frame Designed and manufactured by XCMG, with all covered walking surface, anti-torsion box structure and optimal load-bearing structure design, made of imported high strength steel. | ● |
| Outrigger 4 outriggers, K-shaped arrangement, lateral and vertical outrigger controlled by the hydraulic control. Both sides of the chassis equipped with electronic control console, the console installed with luminous level, lighting and speed buttons; outrigger cylinders equipped with one-way valve, and the vertical outrigger has two-way hydraulic lock. Float dimension: φ450mm Reaction force of outrigger at max. lifting load:820KN | ● |
| Engine MC11.39-30, in-line six-cylinder water-cooled EFI diesel engine, manufactured by CHINA NATIONAL HEAVY DUTY TRUCK GROUP CO., LTD, rated power 290kW/1900rpm max. torque 1900Nm/1000-1400rpm the national III emission standards. Fuel tank capacity : 320L | ● |
| Gearbox Mechanical transmission 10JSD180TB, made by Shaanxi Fast Gear Co., Ltd., manual flexible shaft control, 10-forward speed and 2-reverse speed with a synchronizer. | ● |
| Axles Four-axle chassis, axles 1 and 2 are high strength load-bearing axles for steering, axles 3 and 4 are steering and driving, made by famous makers through adoption of foreign advanced technology | ● |
| Suspension Leaf spring balanced suspensions are adopted for front axle, and dual longitudinal arm leaf spring balanced suspensions are adopted for rear axle. | ● |
| Tires 8tires and 1 spare tire, each axle is equipped with single tire, manufactured by Double coin, large bearing capacity. Tire specifications:385/95R25 | ● |
| Brakes Service braking: foot pedal operated double-circuit air pressure brake. The first circuit acts on the wheels of axles 1 and 2; the second circuit acts on the wheels of axles 3 and 4. Parking brake: air-release brake, acting on the 3rd and 4th axles, it works through the spring-loaded air chamber on each axle. Auxiliary brake: engine exhaust brake and engine retarder brake. | ● |

|  Chassis | Configuration |
|--|---------------|
| Steering All-wheel steering, axles 1 and 2 are mechanically steered + hydraulic power assistance, axles 3 and 4 are steered through cylinder control. | ● |
| Cab New full-dimension enclosed cab, luxury and comfort. It is designed to be leakproof, anti-corrosive and shockproof. It is equipped with a windshield offering outstanding visibility, rear mirrors, electric control washer, electronic lifters of doors and windows, indoor air humidifier with windscreen defroster, air conditioner, radio cassette player, etc. | ● |
| Electric 24V DC, negative ground, 2 batteries. | ● |

技术规格

Technical specifications

| Superstructure | | Configuration |
|-------------------------------|---|---------------|
| Frame | Designed and manufactured by XCMG; Made of high-strength steel | ● |
| Hydraulic system | Electric proportional variable pump driven by an engine, used for lifting, elevating and telescoping operations. A closed pump is used to drive slewing operation. Proportional solenoid valve Air cooled hydraulic oil cooler Oil tank capacity:840L | ● |
| Operating mode | Pilot electric proportional control is used for controlling the superstructure. Also employed are PLC integrated intelligent control technology and CANBus control network. Besides of normal control function, real-time monitoring, fault diagnostic and fuzzy inquiry of working conditions are available. | ● |
| Main winch system | Hydraulic control is used for speed regulation. The system is driven by a hydraulic motor through a planetary gear reducer, with a normally closed brake, a balanced valve and a grooved drum equipped. | ● |
| Auxiliary winch system | Hydraulic control is used for speed regulation. The system is driven by a hydraulic motor through a planetary gear reducer, with a normally closed brake, a balanced valve and a grooved drum equipped. | ● |
| Slewing system | Single-row four-point ball contact external tooth slewing ring is driven by a hydraulic motor ,through a planetary gear reducer , with a normally closed, and may continuously slew 360° Power control or free slewing function is available, and the slewing speed may be infinitely regulated. A single cylinder; | ● |
| Elevating system | A balance valve with load compensation function. The newly designed way, which combines external oil pressure-controlled free-fall with the rod chamber pressure-controlled balance valve. | ● |

| Superstructure | | Configuration |
|--------------------------------|--|---------------|
| Operator's Cab | Steel cab. The cab has full-view front window, safety glass, sliding door, adjustable seat, and it can be turned 20 degrees. It is equipped with sun shield, wipers, top fence, pull-out step, load moment limiter, accelerator pedal, activate switch, air conditioner, etc. The 2 kg fire extinguisher is used for domestic market and 6 kg fire extinguisher is used for exporting. | ● |
| Safety devices | Hydraulic balance valve; hydraulic relief valve; double-way hydraulic valve; load moment limiter; rope-end limiter; height limiter; anemometer; winch camera | ● |
| Combined counter weight | Total weight is 29 t. Counterweight configurations: 6.5 t, 15.5 t, 21.6 t and 29 t | ● |

技术规格

Technical specifications

| Boom system | | Configuration |
|-----------------------------|--|---------------|
| Boom | 6-section, U-shape cross section, welding structure. with single-plate boom head and compact boom tail. Single-cylinder pinning telescoping system Boom length:12.4m ~ 58m. | ● |
| Jib | The jib consists of a connecting bracket, a rotating bracket and two lattice sections. Three offset angles of 0° , 15° and 30° are available. It is stowed along the side of the boom. Jib length:10.8m/18.3m | ● |
| Single top | Fitted at boom head, used for single line operation. Its lifting performance is the same as that for boom, but the maximum lifting load does not exceed 7,000 kg. | ○ |
| Boom extension | Lattice welding structure, Fitted at boom head. Boom extension length:7m | ○ |
| Independent jib head | Lattice welding structure, Fitted at boom head. Independent jib head length:7m | ○ |
| Hook block | 100 ton | ○ |

Product parts list is as mentioned above.
Please refer to the product quotation for specific parts

● —Standard

○ —Optional

重量 Weight






| 车桥 Axle | 1 | 2 | 3 | 4 | 总重量 Total weight |
|------------|----|----|----|----|---------------------|
| t | 12 | 12 | 12 | 12 | 48 |








| 吊钩 Hook | 倍率 No. of lines | 吊钩重量 Weight kg | 吊钩尺寸 Dimensions mm | 备注 Remarks |
|------------|--------------------|-------------------|-----------------------|------------------------------|
| 100t | 12 | 1010 | 857×610×1754 | 双钩 Double hook , 选配 Optional |
| 80t | 12 | 700 | 554×520×1735 | 单钩 Single hook , 标配 Standard |
| 50t | 6 | 515 | 730×329×1586 | 单钩 Single hook , 标配 Standard |
| 7t | 1 | 256 | 426×426×731 | 单钩 Single hook , 标配 Standard |

作业速度 Working speeds

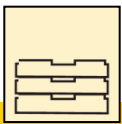
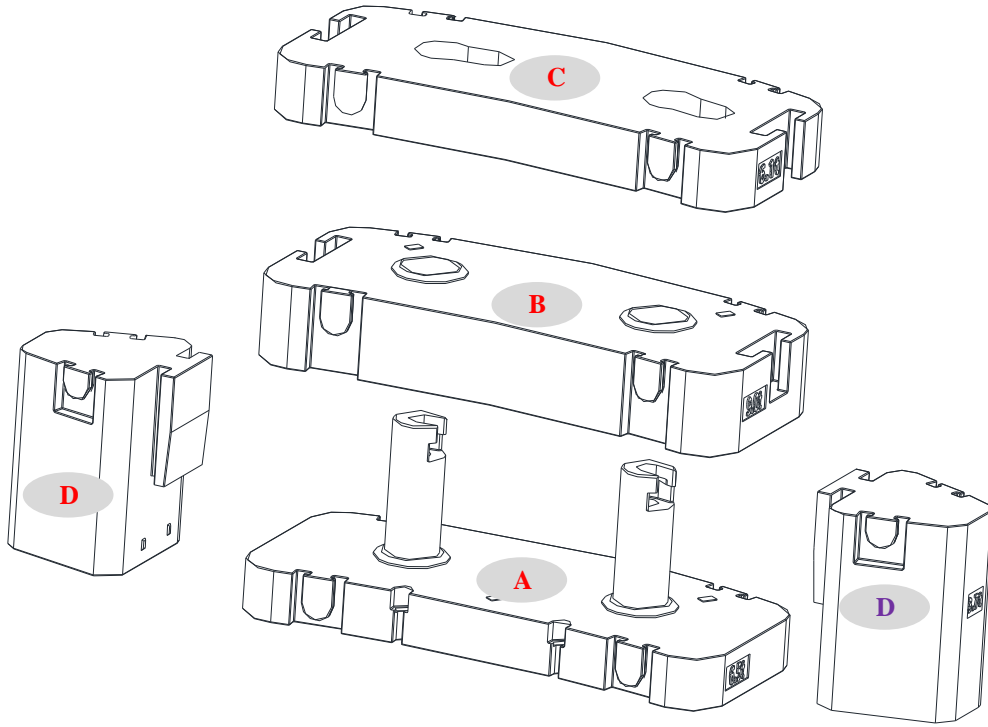


|  |  |  |
|---|---|---|
| 385/95 R 25 (14.00 R 25) | 1 ~ 90 | 45% |



| 作业机构 Drive | 作业速度 Working speed | 最大单绳拉力 Max. single line pull | 钢丝绳直径/长度 Rope diameter/ length |
|--|--|---------------------------------|-----------------------------------|
|  | 0-135 m/min , 单绳 , 第四层 m/min, single line, 4th layer | 82kN | 20 mm/260 m |
|  | 0-105 m/min , 单绳 , 第四层 m/min, single line, 4th layer | 71.5 kN | 20 mm/180 m |
|  | 0-1.8 r/min | | |
|  | 从-0.5°抬起至81°约40s Approx. 40s for boom elevation from -0.5° to 81° | | |
|  | 从12.4m伸出至58m约450s Approx. 450s for boom extension from 12.4m to 58m | | |

平衡重 Counterweight



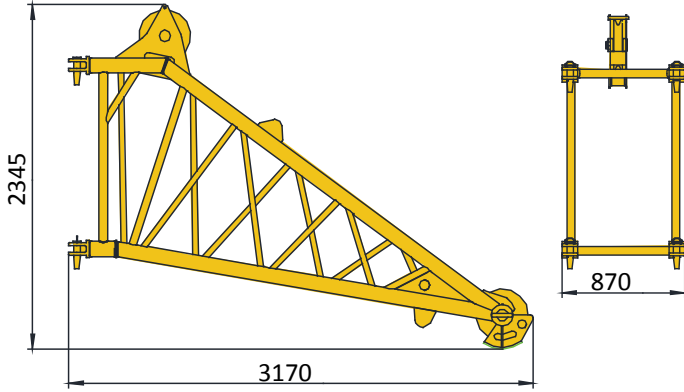
| 平衡重 Counterweight | A | B | C | D |
|--------------------------------|----------------|---------------|---------------|--------------|
| 尺寸 (长×宽×高) m Size (L×W×H) m | 1275×2750×1035 | 1275×2750×484 | 1275×2750×322 | 889×870×1070 |
| 重量 t Weight t | 6.5 | 9 | 6.1 | 3.7 |

| | | | | |
|----------------------|-----------|-------|-------|------|
| 工况模式 Working mode | 29t | 21.6t | 15.5t | 6.5t |
| 组合形式 Combinations | A+B+C+2×D | A+B+C | A+B | A |

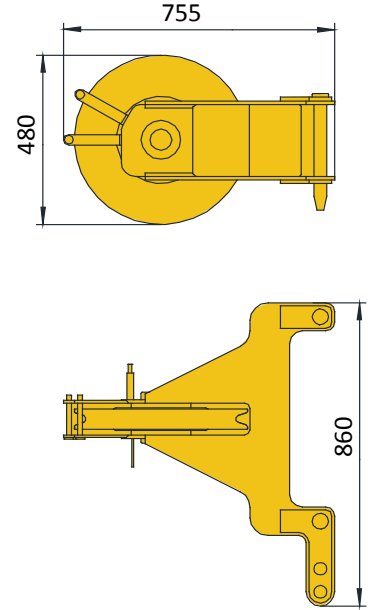
运输部件尺寸

Transportation components dimension

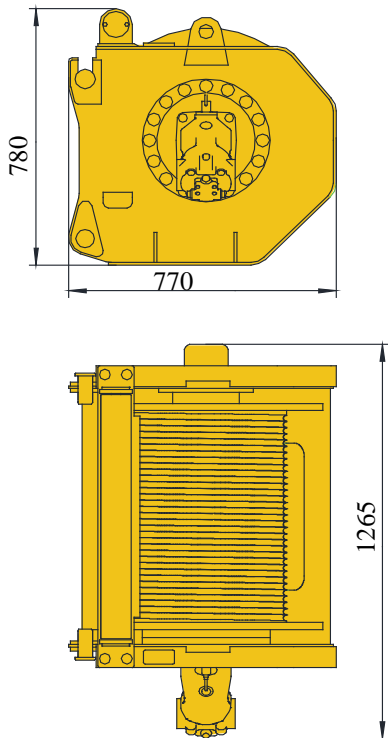
独立臂头 420kg
Independent jib head 420kg



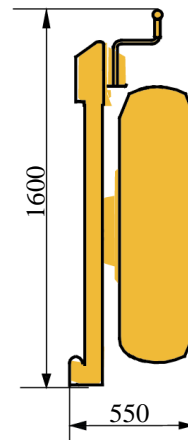
臂端单滑轮95kg
Single top 95kg



副起升机构 (含钢丝绳) 1030kg
Auxiliary winch (rope included) 1030kg



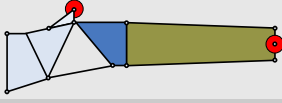
备胎 (含支架) 300kg
Spare wheel (bracket included) 300kg



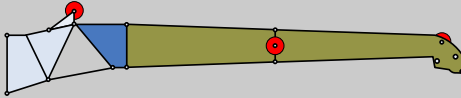
臂架组合方案

Boom / Jib combinations

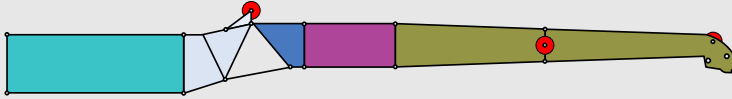
副臂 – 10.8m
Jib – 10.8m

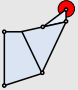
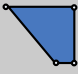





副臂 – 18.3m
Jib – 18.3m



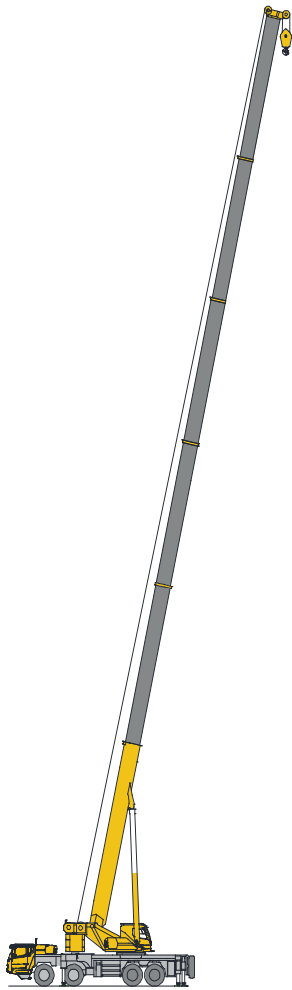
主臂加长节 – 25.3m
Telescopic boom extension – 25.3m



| 部件 Component | 结构形式 Structure | 尺寸 (长×宽×高) mm Size (L×W×H) mm | 重量 kg Weight kg |
|---------------------------------------|---|----------------------------------|--------------------|
| 连接架 Connection bracket |  | 2025×850×1820 | 230 |
| 旋转架 Swinging bracket |  | 2055×695×1155 | 200 |
| 主臂加长节 Telescopic boom extension |  | 7090×850×1360 | 450 |
| 一节副臂总成 First jib section assembly |  | 7780×640×920 | 565 |
| 二节副臂总成 Second jib section assembly |  | 7410×445×670 | 260 |

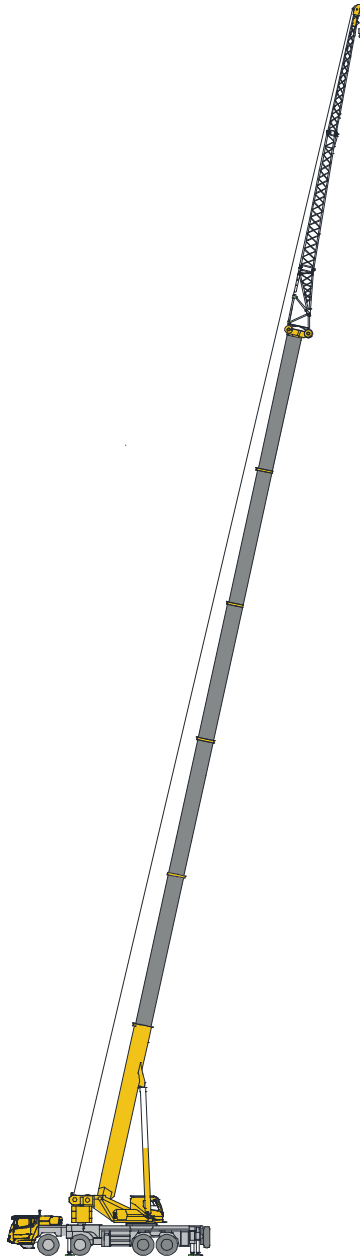
臂架组合方案

Boom / Jib combinations



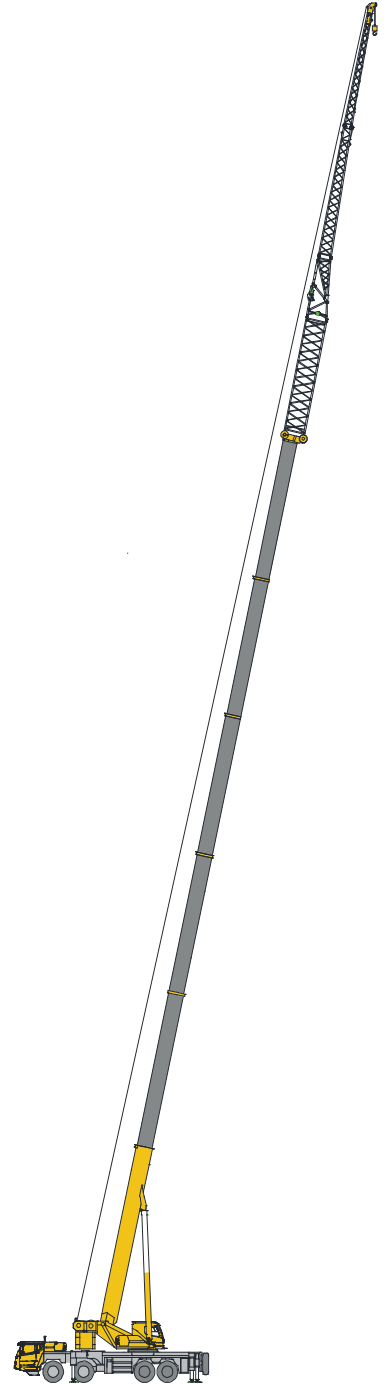
主臂
Telescopic boom

T : 12.4~58m



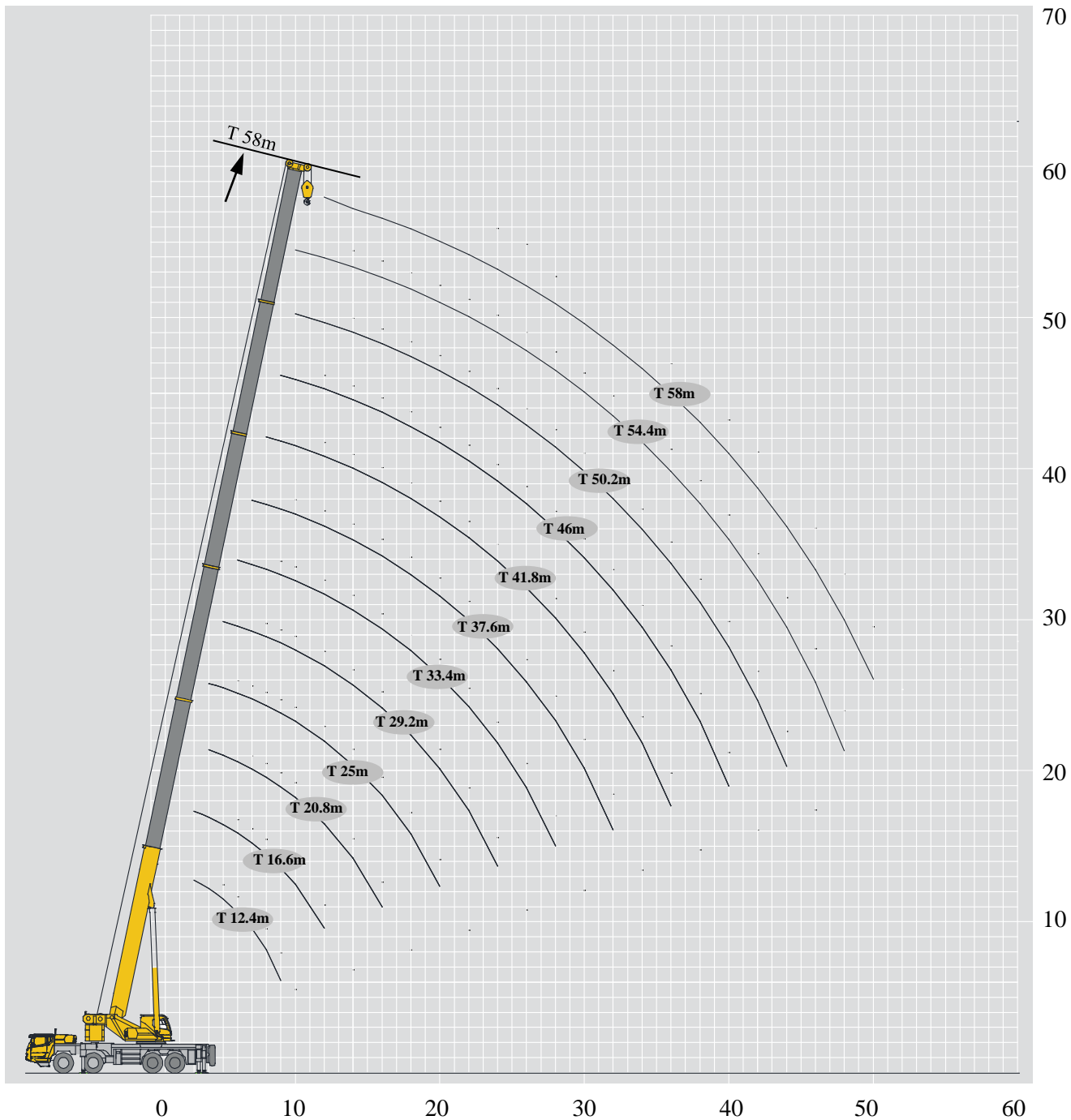
副臂
Jib

T : 54.4~58m
J : 10.8~18.3 m



主臂加长节
Telescopic boom extension

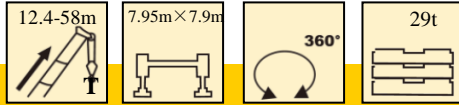
T : 54.4~58m
I : 7m
J : 10.8~18.3m



起重性能表

Lifting capacities

T 12.4~58m



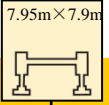

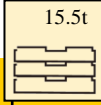



| | 12.4m | 16.6m | 20.8 m | 25m | 29.2m | 33.4m | 37.6m | 41.8m | 46m | 50.2m | 54.4m | 58m | |
|-----|-------|-------|--------|------|-------|-------|-------|-------|------|-------|-------|------|-----|
| 3 | 100.0 | 80.0 | | | | | | | | | | | 3 |
| 3.5 | 90.0 | 80.0 | | | | | | | | | | | 3.5 |
| 4 | 88.0 | 79.0 | 73.0 | 65.0 | | | | | | | | | 4 |
| 4.5 | 79.0 | 75.0 | 70.0 | 65.0 | | | | | | | | | 4.5 |
| 5 | 70.0 | 69.0 | 67.0 | 63.0 | 55.0 | | | | | | | | 5 |
| 6 | 60.0 | 59.0 | 59.0 | 57.0 | 55.0 | 46.5 | | | | | | | 6 |
| 7 | 50.0 | 51.0 | 51.0 | 51.0 | 51.0 | 44.0 | 36.7 | | | | | | 7 |
| 8 | 44.0 | 44.0 | 44.0 | 44.0 | 45.0 | 41.0 | 33.2 | 27.6 | | | | | 8 |
| 9 | 37.0 | 40.0 | 40.0 | 39.0 | 40.0 | 36.4 | 29.4 | 25.9 | 23.4 | | | | 9 |
| 10 | | 35.0 | 36.0 | 35.0 | 35.0 | 33.3 | 27.3 | 24.1 | 22.0 | 19.4 | | | 10 |
| 12 | | 29.2 | 29.0 | 28.4 | 30.0 | 30.2 | 24.0 | 21.3 | 19.7 | 17.5 | 15.0 | 13.5 | 12 |
| 14 | | | 24.0 | 24.8 | 24.2 | 23.7 | 21.8 | 19.0 | 17.9 | 15.7 | 13.9 | 13.0 | 14 |
| 16 | | | 19.5 | 19.6 | 19.6 | 19.1 | 18.7 | 17.0 | 16.2 | 14.5 | 13.1 | 12.0 | 16 |
| 18 | | | | 16.5 | 16.2 | 16.2 | 15.8 | 15.2 | 14.7 | 13.2 | 12.2 | 11.2 | 18 |
| 20 | | | | 13.9 | 13.7 | 14.2 | 13.6 | 12.6 | 12.8 | 12.1 | 11.3 | 10.4 | 20 |
| 22 | | | | | 12.4 | 12.2 | 11.6 | 11.2 | 11.2 | 11.2 | 10.2 | 9.3 | 22 |
| 24 | | | | | 10.8 | 10.5 | 10.2 | 9.8 | 10.1 | 9.6 | 9.3 | 8.4 | 24 |
| 26 | | | | | | 9.2 | 9.4 | 9.1 | 9.1 | 8.7 | 8.5 | 7.8 | 26 |
| 28 | | | | | | 8.1 | 8.3 | 8.0 | 7.9 | 8.1 | 7.6 | 7.2 | 28 |
| 30 | | | | | | | 7.4 | 7.4 | 7.0 | 7.0 | 6.7 | 6.6 | 30 |
| 32 | | | | | | | 6.5 | 6.6 | 6.3 | 6.1 | 5.9 | 5.9 | 32 |
| 34 | | | | | | | | 5.9 | 5.6 | 5.4 | 5.2 | 5.2 | 34 |
| 36 | | | | | | | | 5.2 | 5.0 | 4.8 | 4.5 | 4.5 | 36 |
| 38 | | | | | | | | | 4.6 | 4.2 | 4.0 | 4.0 | 38 |
| 40 | | | | | | | | | 4.1 | 3.8 | 3.5 | 3.5 | 40 |
| 42 | | | | | | | | | | 3.3 | 3.0 | 3.0 | 42 |
| 44 | | | | | | | | | | 2.9 | 2.7 | 2.7 | 44 |
| 46 | | | | | | | | | | | 2.3 | 2.3 | 46 |
| 48 | | | | | | | | | | | 2.0 | 2.1 | 48 |
| 50 | | | | | | | | | | | | 1.8 | 50 |

起重性能表

Lifting capacities



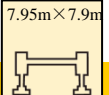
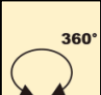
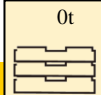

T 12.4~58m

|  |  | | | |  | |  | |  | | | | |  |
|--|---|-------|-------|------|---|-------|---|-------|---|-------|-------|------|--|---|
| | 12.4m | 16.6m | 20.8m | 25m | 29.2m | 33.4m | 37.6m | 41.8m | 46m | 50.2m | 54.4m | 58m | | |
| 3 | 100.0 | 80.0 | | | | | | | | | | | | 3 |
| 3.5 | 90.0 | 80.0 | | | | | | | | | | | | 3.5 |
| 4 | 88.0 | 79.0 | 73.0 | 65.0 | | | | | | | | | | 4 |
| 4.5 | 79.0 | 75.0 | 70.0 | 65.0 | | | | | | | | | | 4.5 |
| 5 | 70.0 | 69.0 | 67.0 | 63.0 | 55.0 | | | | | | | | | 5 |
| 6 | 60.0 | 59.0 | 59.0 | 57.0 | 55.0 | 46.5 | | | | | | | | 6 |
| 7 | 49.0 | 51.0 | 51.0 | 51.0 | 51.0 | 44.0 | 36.7 | | | | | | | 7 |
| 8 | 39.0 | 43.8 | 43.0 | 43.5 | 45.0 | 41.0 | 33.2 | 27.6 | | | | | | 8 |
| 9 | 30.0 | 35.5 | 35.1 | 36.6 | 37.3 | 36.4 | 29.4 | 25.9 | 23.4 | | | | | 9 |
| 10 | | 29.9 | 30.0 | 31.1 | 30.9 | 30.3 | 27.3 | 24.1 | 22.0 | 19.4 | | | | 10 |
| 12 | | 21.6 | 22.5 | 22.7 | 22.5 | 22.0 | 21.4 | 21.3 | 19.7 | 17.5 | 15.0 | 13.5 | | 12 |
| 14 | | | 17.3 | 17.5 | 17.9 | 18.1 | 17.5 | 16.5 | 16.5 | 15.7 | 13.9 | 13.0 | | 14 |
| 16 | | | 14.0 | 14.4 | 14.8 | 14.5 | 14.2 | 13.6 | 13.8 | 13.4 | 13.1 | 12.0 | | 16 |
| 18 | | | | 12.1 | 12.2 | 11.9 | 12.2 | 12.1 | 11.7 | 11.6 | 11.2 | 11.2 | | 18 |
| 20 | | | | 10.1 | 10.2 | 9.9 | 10.2 | 10.2 | 10.0 | 9.6 | 9.2 | 9.3 | | 20 |
| 22 | | | | | 8.6 | 8.4 | 8.7 | 8.7 | 8.4 | 8.1 | 7.7 | 7.8 | | 22 |
| 24 | | | | | 7.4 | 7.1 | 7.4 | 7.4 | 7.2 | 6.9 | 6.5 | 6.5 | | 24 |
| 26 | | | | | | 6.1 | 6.4 | 6.4 | 6.2 | 5.8 | 5.5 | 5.5 | | 26 |
| 28 | | | | | | 5.2 | 5.5 | 5.5 | 5.3 | 5.0 | 4.6 | 4.7 | | 28 |
| 30 | | | | | | | 4.8 | 4.8 | 4.5 | 4.3 | 3.9 | 3.9 | | 30 |
| 32 | | | | | | | 4.1 | 4.1 | 3.9 | 3.6 | 3.3 | 3.3 | | 32 |
| 34 | | | | | | | | 3.6 | 3.3 | 3.1 | 2.7 | 2.7 | | 34 |
| 36 | | | | | | | | 3.1 | 2.9 | 2.6 | 2.2 | 2.3 | | 36 |
| 38 | | | | | | | | | 2.4 | 2.2 | 1.8 | 1.8 | | 38 |
| 40 | | | | | | | | | 2.0 | 1.8 | 1.4 | 1.5 | | 40 |
| 42 | | | | | | | | | | 1.4 | 1.1 | 1.1 | | 42 |
| 44 | | | | | | | | | | 1.2 | | | | 44 |

起重性能表

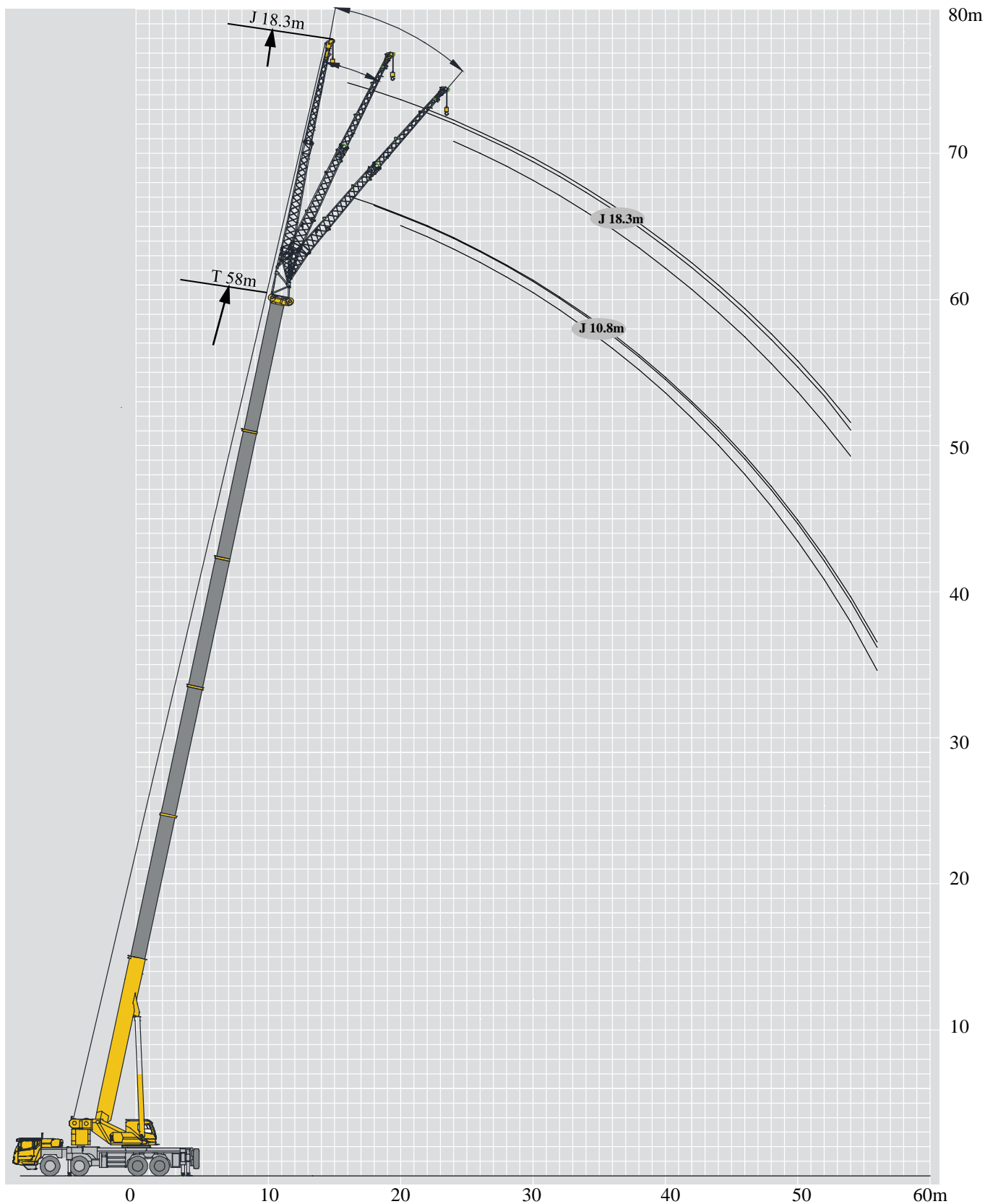
Lifting capacities

T 12.4~58m

|  |     | | | | | | | | | | | | |  |
|--|---|-------|-------|------|-------|-------|-------|-------|------|-------|-------|------|--|---|
| | 12.4m | 16.6m | 20.8m | 25m | 29.2m | 33.4m | 37.6m | 41.8m | 46m | 50.2m | 54.4m | 58m | | |
| 3 | 100.0 | 80.0 | | | | | | | | | | | | 3 |
| 3.5 | 90.0 | 80.0 | | | | | | | | | | | | 3.5 |
| 4 | 88.0 | 79.0 | 73.0 | 65.0 | | | | | | | | | | 4 |
| 4.5 | 79.0 | 75.0 | 70.0 | 65.0 | | | | | | | | | | 4.5 |
| 5 | 70.0 | 69.0 | 67.0 | 63.0 | 55.0 | | | | | | | | | 5 |
| 6 | 49.8 | 52.4 | 51.7 | 51.0 | 52.9 | 46.0 | | | | | | | | 6 |
| 7 | 34.0 | 37.2 | 38.3 | 38.7 | 38.4 | 37.6 | 36.4 | | | | | | | 7 |
| 8 | 25.1 | 27.9 | 28.9 | 29.2 | 29.0 | 28.2 | 27.9 | 27.4 | | | | | | 8 |
| 9 | 19.3 | 21.9 | 22.8 | 23.1 | 24.2 | 23.9 | 23.0 | 22.3 | 21.9 | | | | | 9 |
| 10 | | 17.7 | 18.9 | 19.8 | 19.9 | 19.6 | 20.0 | 19.5 | 18.6 | 18.1 | | | | 10 |
| 12 | | 12.0 | 13.2 | 14.1 | 14.1 | 13.8 | 14.2 | 14.2 | 13.9 | 13.5 | 13.0 | 13.1 | | 12 |
| 14 | | | 9.4 | 10.3 | 10.4 | 10.1 | 10.4 | 10.5 | 10.1 | 9.8 | 9.3 | 9.4 | | 14 |
| 16 | | | 6.9 | 7.7 | 7.8 | 7.5 | 7.9 | 7.9 | 7.6 | 7.3 | 6.8 | 6.9 | | 16 |
| 18 | | | | 5.9 | 6.0 | 5.7 | 6.1 | 6.1 | 5.8 | 5.5 | 5.0 | 5.1 | | 18 |
| 20 | | | | 4.6 | 4.7 | 4.4 | 4.7 | 4.7 | 4.5 | 4.2 | 3.7 | 3.8 | | 20 |
| 22 | | | | | 3.6 | 3.4 | 3.7 | 3.7 | 3.4 | 3.2 | 2.8 | 2.8 | | 22 |
| 24 | | | | | 2.8 | 2.6 | 2.9 | 2.9 | 2.6 | 2.3 | 2.0 | 2.0 | | 24 |
| 26 | | | | | | 1.9 | 2.2 | 2.2 | 2.0 | 1.7 | 1.3 | 1.3 | | 26 |
| 28 | | | | | | 1.4 | 1.6 | 1.7 | 1.4 | 1.1 | | | | 28 |

起升高度曲线图 Lifting heights


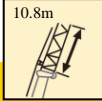
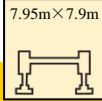

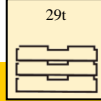
副臂
Jib

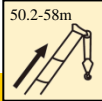
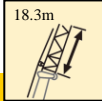
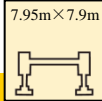

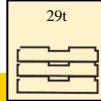


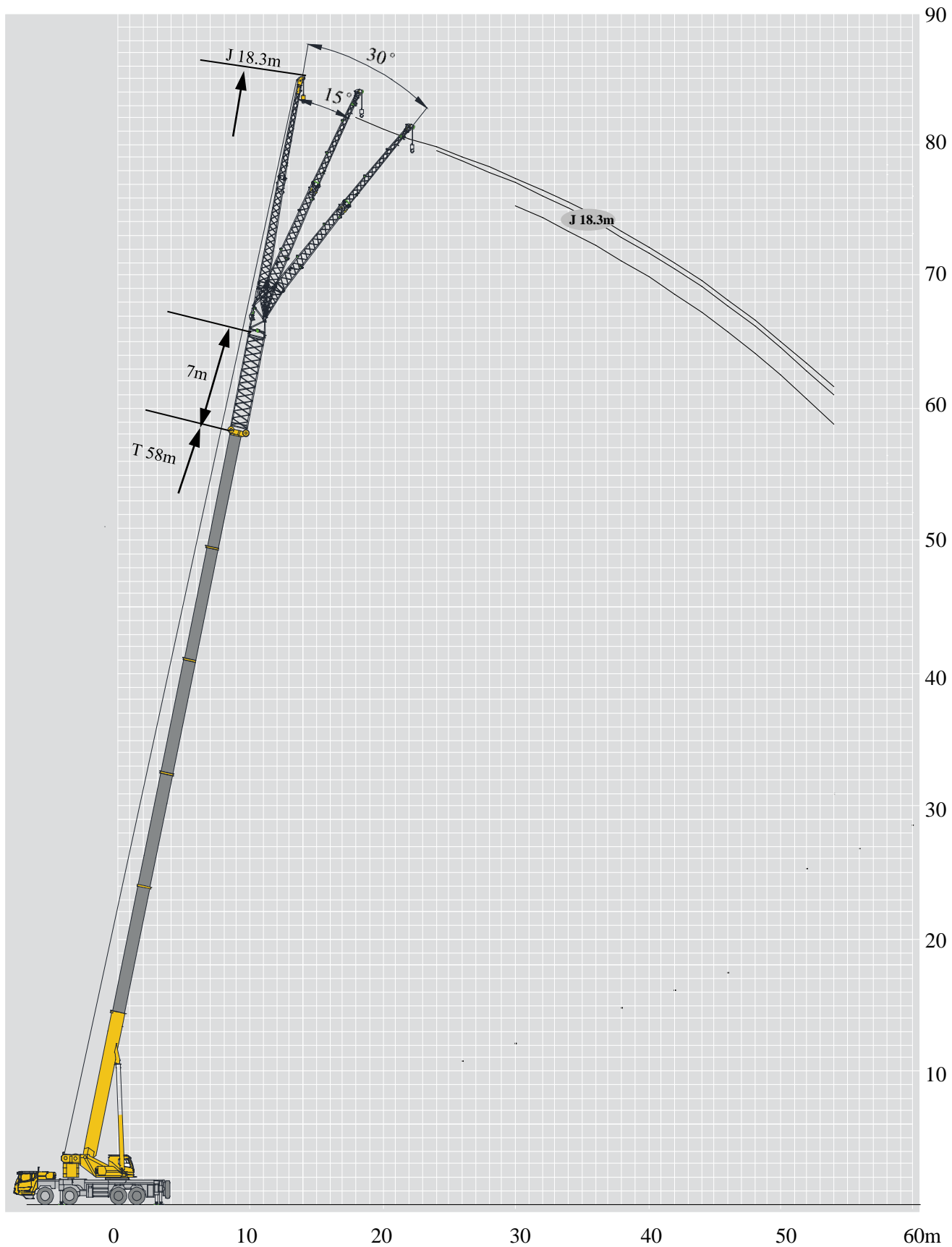
起重性能表

Lifting capacities

J 10.8m/18.3 m

| |      | | | | | | | | | |
|----|---|-----|-----|--------|-----|-----|-------|-----|-----|----|
| | 50.2m | | | 54.4 m | | | 58 m | | | |
| | 0° | 15° | 30° | 0° | 15° | 30° | 0° | 15° | 30° | |
| 12 | 7 | | | | | | | | | 12 |
| 14 | 7 | | | 7 | | | | | | 14 |
| 16 | 7 | 6.2 | | 6.9 | 6.1 | | 6.6 | | | 16 |
| 18 | 6.8 | 5.8 | 4.5 | 6.6 | 5.8 | 4.5 | 6.6 | 5.8 | | 18 |
| 20 | 6.5 | 5.7 | 4.3 | 6.5 | 5.7 | 4.3 | 6.5 | 5.7 | 4.3 | 20 |
| 22 | 6.3 | 5.5 | 4.2 | 6.3 | 5.5 | 4.2 | 6.3 | 5.5 | 4.2 | 22 |
| 24 | 6 | 5.3 | 4.1 | 6.1 | 5.3 | 4.1 | 5.7 | 4.9 | 4.1 | 24 |
| 26 | 5.8 | 5.1 | 4 | 5.8 | 5.1 | 4 | 5 | 4.5 | 4 | 26 |
| 28 | 5.6 | 5 | 3.9 | 4.6 | 5 | 3.9 | 4.2 | 4.5 | 3.9 | 28 |
| 30 | 5 | 4.5 | 3.9 | 4.5 | 4.4 | 3.9 | 3.8 | 3.6 | 3.9 | 30 |
| 32 | 4.4 | 4.3 | 3.8 | 4.5 | 4.4 | 3.6 | 3.8 | 3.4 | 3.1 | 32 |
| 34 | 4.4 | 4 | 3.8 | 3.4 | 3.3 | 3.6 | 3.8 | 3.4 | 3.1 | 34 |
| 36 | 4.4 | 4 | 3.7 | 3.4 | 3.3 | 3.6 | 3.1 | 3.4 | 3.1 | 36 |
| 38 | 4 | 3.5 | 3.6 | 3.4 | 3.3 | 3.6 | 2.8 | 2.6 | 3.1 | 38 |
| 40 | 3.3 | 3.2 | 3.5 | 3.4 | 3.3 | 3.5 | 2.8 | 2.5 | 3.1 | 40 |
| 42 | 3.3 | 3 | 3.4 | 2.5 | 2.5 | 2.7 | 2.2 | 2.5 | 2.3 | 42 |
| 44 | 3.3 | 3 | 3.2 | 2.5 | 2.5 | 2.7 | 2.1 | 2.5 | 2.3 | 44 |
| 46 | 2.8 | 2.8 | 2.8 | 2.5 | 2.5 | 2.7 | 2.1 | 1.9 | 2.3 | 46 |
| 48 | 2.5 | 2.5 | 2.8 | 2.3 | 2.4 | 2.5 | 2.1 | 1.9 | 2.3 | 48 |
| 50 | 2.3 | 2.3 | 2.4 | 2 | 2.1 | 2.2 | 1.6 | 1.9 | 1.7 | 50 |
| 52 | | | | 1.7 | 1.8 | 1.9 | 1.6 | 1.8 | 1.7 | 52 |
| 54 | | | | | | 1.6 | 1.4 | 1.4 | 1.6 | 54 |
| 56 | | | | | | | 1.2 | 1.3 | 1.3 | 56 |
| 组合 | 12222 | | | 22222 | | | 33333 | | | 组合 |

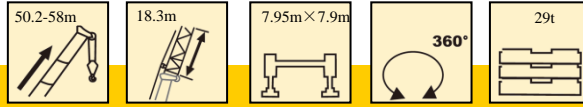
| |      | | | | | | | | | |
|----|---|-----|-----|--------|-----|-----|-------|-----|-----|----|
| | 50.2m | | | 54.4 m | | | 58 m | | | |
| | 0° | 15° | 30° | 0° | 15° | 30° | 0° | 15° | 30° | |
| 14 | 4.3 | | | | | | | | | 14 |
| 16 | 4 | | | 3.8 | | | 3.8 | | | 16 |
| 18 | 3.8 | 3.3 | | 3.7 | | | 3.7 | | | 18 |
| 20 | 3.7 | 3.2 | | 3.5 | 3.2 | | 3.5 | | | 20 |
| 22 | 3.5 | 3.1 | 2.6 | 3.4 | 3.1 | | 3.3 | 3.1 | | 22 |
| 24 | 3.4 | 3.1 | 2.6 | 3.3 | 3.1 | 2.6 | 3.3 | 3 | 2.5 | 24 |
| 26 | 3.2 | 2.9 | 2.5 | 3.1 | 2.9 | 2.5 | 3 | 2.8 | 2.4 | 26 |
| 28 | 3.1 | 2.8 | 2.4 | 3 | 2.8 | 2.4 | 2.8 | 2.7 | 2.3 | 28 |
| 30 | 3 | 2.7 | 2.3 | 2.8 | 2.7 | 2.3 | 2.6 | 2.5 | 2.2 | 30 |
| 32 | 2.8 | 2.6 | 2.2 | 2.6 | 2.5 | 2.2 | 2.5 | 2.4 | 2.2 | 32 |
| 34 | 2.6 | 2.5 | 2.2 | 2.5 | 2.4 | 2.2 | 2.4 | 2.4 | 2.1 | 34 |
| 36 | 2.5 | 2.4 | 2.1 | 2.4 | 2.4 | 2.1 | 2.3 | 2.3 | 2.1 | 36 |
| 38 | 2.4 | 2.3 | 2.1 | 2.3 | 2.3 | 2.1 | 2.1 | 2 | 2.1 | 38 |
| 40 | 2.3 | 2.3 | 2.1 | 2.2 | 2.2 | 2.1 | 1.8 | 1.8 | 2 | 40 |
| 42 | 2.2 | 2.2 | 2 | 2.1 | 1.9 | 2 | 1.8 | 1.8 | 1.9 | 42 |
| 44 | 2.1 | 2.1 | 2 | 1.7 | 1.9 | 2 | 1.8 | 1.8 | 1.5 | 44 |
| 46 | 2 | 2 | 2 | 1.6 | 1.8 | 1.9 | 1.5 | 1.8 | 1.5 | 46 |
| 48 | 2 | 1.9 | 1.9 | 1.6 | 1.7 | 1.8 | 1.4 | 1.5 | 1.5 | 48 |
| 50 | 1.9 | 1.8 | 1.8 | 1.5 | 1.6 | 1.5 | 1.4 | 1.4 | 1.5 | 50 |
| 52 | 1.8 | 1.7 | 1.7 | 1.5 | 1.4 | 1.5 | 1.4 | 1.4 | 1.5 | 52 |
| 54 | 1.5 | 1.6 | 1.5 | 1.3 | 1.4 | 1.5 | 1.1 | 1.4 | 1.2 | 54 |
| 组合 | 12222 | | | 22222 | | | 33333 | | | 组合 |



起重性能表

Lifting capacities

I 7m



| | 50.2+7 | | | 54.4+7 | | | 58+7 | | | |
|----|--------|-----|-----|--------|-----|-----|-------|-----|-----|----|
| | 18.3 m | | | | | | | | | |
| | 0° | 15° | 30° | 0° | 15° | 30° | 0° | 15° | 30° | |
| 16 | 3.7 | | | | | | | | | 16 |
| 18 | 3.6 | | | 3.5 | | | 3.4 | | | 18 |
| 20 | 3.5 | | | 3.4 | | | 3.3 | | | 20 |
| 22 | 3.4 | 3.1 | | 3.3 | | | 3.3 | | | 22 |
| 24 | 3.3 | 3.0 | | 3.3 | 3.0 | | 3.1 | 2.9 | | 24 |
| 26 | 3.2 | 2.9 | | 3.1 | 2.9 | | 3.0 | 2.8 | | 26 |
| 28 | 3.1 | 2.8 | 2.4 | 3.0 | 2.8 | 2.4 | 2.8 | 2.7 | | 28 |
| 30 | 3.0 | 2.7 | 2.3 | 2.8 | 2.7 | 2.3 | 2.6 | 2.5 | 2.2 | 30 |
| 32 | 2.8 | 2.6 | 2.2 | 2.6 | 2.5 | 2.2 | 2.5 | 2.4 | 2.2 | 32 |
| 34 | 2.6 | 2.5 | 2.1 | 2.5 | 2.4 | 2.1 | 2.4 | 2.3 | 2.1 | 34 |
| 36 | 2.5 | 2.4 | 2.0 | 2.3 | 2.3 | 2.1 | 2.3 | 2.3 | 2.1 | 36 |
| 38 | 2.4 | 2.3 | 2.0 | 2.3 | 2.3 | 2.0 | 2.0 | 1.9 | 2.0 | 38 |
| 40 | 2.3 | 2.2 | 2.0 | 2.2 | 2.2 | 2.0 | 1.7 | 1.7 | 1.9 | 40 |
| 42 | 2.2 | 2.1 | 1.9 | 2.1 | 1.8 | 2.0 | 1.7 | 1.7 | 1.8 | 42 |
| 44 | 2.1 | 2.0 | 1.9 | 1.6 | 1.8 | 1.9 | 1.7 | 1.7 | 1.4 | 44 |
| 46 | 2.0 | 1.9 | 1.9 | 1.6 | 1.7 | 1.8 | 1.4 | 1.7 | 1.4 | 46 |
| 48 | 2.0 | 1.8 | 1.8 | 1.6 | 1.6 | 1.7 | 1.3 | 1.4 | 1.4 | 48 |
| 50 | 1.9 | 1.7 | 1.7 | 1.4 | 1.5 | 1.4 | 1.3 | 1.3 | 1.4 | 50 |
| 52 | 1.8 | 1.6 | 1.6 | 1.4 | 1.3 | 1.4 | 1.3 | 1.3 | 1.4 | 52 |
| 54 | 1.5 | 1.5 | 1.4 | 1.2 | 1.3 | 1.4 | 1.0 | 1.3 | 1.1 | 54 |
| 56 | 1.5 | 1.5 | 1.4 | 1.2 | 1.3 | 1.4 | | | | 56 |
| 组合 | 12222 | | | 22222 | | | 33333 | | | 组合 |

符号标识

Description of symbols

常规标识

General symbols

| | | | |
|--|----------------------------------|---|--------------------------|
|  | 上车 Superstructure |  | 底盘 Chassis |
|  | 起重能力 lifting capacity |  | 车桥 Axle |
|  | 吊臂长度 Boom length |  | 行驶速度 Driving speed |
|  | 工作幅度 Radius |  | 爬坡能力 Gradability |
|  | 吊臂仰角 Boom position |  | 轮胎 Tyres |
|  | 主臂起升高度 Hoist height with Boom |  | 支腿 Outriggers |
|  | 固定副臂长度 Fixed jib length |  | 吊钩 Hook block |
|  | 副臂安装角 Jib offset angle |  | 平衡重 Counterweight |
|  | 副臂起升高度 Hoist height with jib |  | 卷扬 Winch |
|  | 独立臂头 Independent jib head |  | 360°全回转 360° rotation |
|  | 主臂加长节 Boom extension | | |

主要技术参数表

Main technical Parameters

| 类别 Category | 项目 Item | 单位 Unit | 参数 Parameter | |
|--------------------|---|-------------|---------------------|-------|
| 尺寸参数 Dimensions | 外形尺寸 (长×宽×高) Outline size (length×width×height) | mm | 13985×2780×3990 | |
| | 轴距 Wheel base | mm | 2000+4000+1500 | |
| | 轮距 (前/后) Track (Front/ Rear) | mm | 2354/2354/2291/2291 | |
| | 前悬/后悬 Front/ Rear overhang | mm | 2525/2310 | |
| | 前伸/后伸 Front/ Rear extension | mm | 1650/0 | |
| 重量参数 Weight | 最大允许总质量 | kg | 48000 | |
| | 轴荷 | 一轴 1st axle | kg | 12000 |
| | | 二轴 2nd axle | kg | 12000 |
| | | 三轴 3rd axle | kg | 12000 |
| | | 四轴 4th axle | kg | 12000 |
| 动力参数 Power | 发动机型号 Engine model | — | MC11.39-30 | |
| | 额定功率/转速 Engine rated power/rpm | kW/(r/min) | 290/1900 | |
| | 最大净功率/转速 Max. net power/rpm | kW/(r/min) | 287/1900 | |
| | 最大输出扭矩/转速 Engine rated torque/rpm | N.m/(r/min) | 1900/1000 ~ 1400 | |
| 行驶参数 Travel | 最高车速 Max. travel speed | km/h | ≥90 | |
| | 最低稳定车速 Min. travel speed | km/h | 1.7 ~ 3 | |
| | 最小转弯直径 Min. turning diameter | m | ≤20 | |
| | 臂头最小转弯直径 Min. turning diameter at boom tip | m | ≤25.2 | |
| | 最小离地间隙 Min. ground clearance | mm | 367 | |
| | 接近角 Approach angle | ° | 21 | |
| | 离去角 Departure angle | ° | 15 | |
| | 制动距离 (制动初速度为30km/h) Braking distance (at 30 km/h) | m | ≤10 | |
| | 最大爬坡能力 Max. grade ability | % | ≥45 | |
| | 百公里油耗 Fuel consumption per 100 km | L | 45 | |
| 噪音 Noise | 加速行驶机外噪声 Exterior noise level | dB(A) | ≤88 | |
| | 驾驶员耳旁噪声 Noise level at seated position | dB(A) | ≤90 | |

主要技术参数表

Main technical Parameters

| 类别 Category | 项目 Item | | 单位 Unit | 参数 Parameter | |
|--|---|--------------------------------------|--------------|-----------------|-----|
| 主要性能参数 Main performance | 最大额定总起重量 Max. total rated lifting capacity | | t | 100 | |
| | 最小额定工作幅度 Min. rated working radius | | m | 3 | |
| | 转台尾部回转半径 Turning radius at turntable tail | 平衡重处 Counterweight | mm | 4400 | |
| | | 副卷处 Auxiliary winch | mm | 4580 | |
| | 最大起重力矩 Max. load moment | 基本臂 Base boom | kN.m | 3528 | |
| | | 最长主臂 Fully-extended boom | kN.m | 2038 | |
| | | 最长主臂+副臂 Fully-extended boom + Jib | kN.m | 1035 | |
| | 支腿跨距 Outrigger span | 纵向 Longitudinal | m | 7.95 | |
| | | 横向 Lateral | m | 7.9 | |
| | 起升高度 Hoist height | 基本臂 Base boom | m | 12.8 | |
| | | 最长主臂 Fully-extended boom | m | 58 | |
| | | 最长主臂+副臂 Fully-extended boom + Jib | m | 82 | |
| | 起重臂长度 Boom length | 基本臂 Base boom | m | 12.4 | |
| | | 最长主臂 Fully-extended boom | m | 58 | |
| | | 最长主臂+副臂 Fully-extended boom + Jib | m | 83.3 | |
| 副臂安装角 Jib offset angle | | ° | 0、15、30 | | |
| 工作速度参数 Working speed | 起重臂起臂时间 Boom raising time | | s | ≤50 | |
| | 起重臂全伸时间 Boom fully extended time | | s | ≤450 | |
| | 最大回转速度 Max. slewing speed | | r/min | ≥1.8 | |
| | 支腿收放时间 Outrigger extending and retracting time | 水平支腿 Outrigger beam | 收 Retracting | s | ≤30 |
| | | | 放 Extending | s | ≤40 |
| | | 垂直支腿 Outrigger jack | 收 Retracting | s | ≤30 |
| | | | 放 Extending | s | ≤40 |
| 起升速度 (单绳,第四层,空载) Hoisting speed (single line, 4th layer, no load) | 主起升机构 Main winch | | m/min | ≥135 | |
| | 副起升机构 Auxiliary winch | | m/min | ≥105 | |
| 噪声 Noise | 机外辐射 Exterior noise level | | dB (A) | ≤124 | |
| | 司机位置处 Noise level at seated position | | dB (A) | ≤90 | |

注意事项

Notes

1. 表中额定总起重量值，是在平整的坚固地面上本起重机能够保证的最大总起重量，包括吊钩和吊具的重量，所以为了估算重物重量，必须减去上述的装置重量。
2. 表中的工作幅度为起吊重物离地时起重物到起重机回转轴线的水平距离，是包括起重臂变形量在内的实际值，因而起吊前应考虑起重臂变形量。
3. 只允许在5级(瞬时风速14.1m/s，风压125N/m²)风以下进行作业。
4. 吊重前操作者必须对物体的重量和工作范围了解后选择合适的作业工况，严禁超出表中的数值。幅度及臂长在相邻两个数值之间时，应依据两个数值中较小值确定起重作业。
5. 应按主臂仰角范围作业，即使是空载，也不应使主臂仰角处于范围外，谨防整机倾翻。
6. 表中的主臂长度应要按照每节臂的伸缩要求进行伸出。

1. The total rated loads given in the rated load charts are the maximum lifting capacity when the crane is set up on firm and level ground, which includes the weight of the hook block and slings. The weight of above-mentioned devices should be deducted to correctly calculate the load weight.
2. The working radius shown in the rated load charts is the radius when the load is lifted off the ground, and it is the actual value including loaded boom deflection.
3. A lifting operation is permissible only when the wind force is below grade 5 (instantaneous wind speed is 14.1 m/s, wind pressure is 125 N/m²).
4. Before beginning lifting operation, the operator should know the weight of the load to be lifted and its working range, and then select proper working conditions. Never operate the crane beyond the limit shown in the chart. Use the lower value from the chart when the boom length or working radius is between the range of values.
5. Observe the boom angle limit. Never operate the crane with the boom angle beyond the recommended limit even if a load is not being carried. Otherwise, the crane will tip.
6. The boom length given in the rated load charts should accord with the telescoping code of boom sections .



地址：江苏省徐州市经济技术开发区高新路68号

Add : No. 68 Gaoxin Road , Economic and Technological
Development Zone , Xuzhou , Jiangsu , China

电话(Tel) : +86-516-83462242/83462350

质量监督电话(Quality Inquiry Tel) : +86-516-87888268

备件电话(Spare Parts Tel) : +86-516-83461542

邮编(Post Code) : 221004

网址(Web) : www.xcmg.com/qizhongji

服务热线 Service Tel

400-110-9999

400-001-5678



本印刷品不属于合同。出于产品不断改进的需要，我们保留对产品型号、参数、配置进行变更的权利，恕不另行通知。图片仅供参考，具体产品以实物为准。图片中产品可能并非标准配置，部分部件可能需要另行购置。办理牌照和上路行驶需遵守当地法规。

This print does not belong to the contract. We reserve the right to modify the design (such as product model, parameters and configuration) without notice for improvement. The pictures are just for reference. The product in the picture may not be standard configuration. Some parts need to be purchased separately. Conform to the local laws for license application and road traveling.